

# The Grebe

Three bedroom home

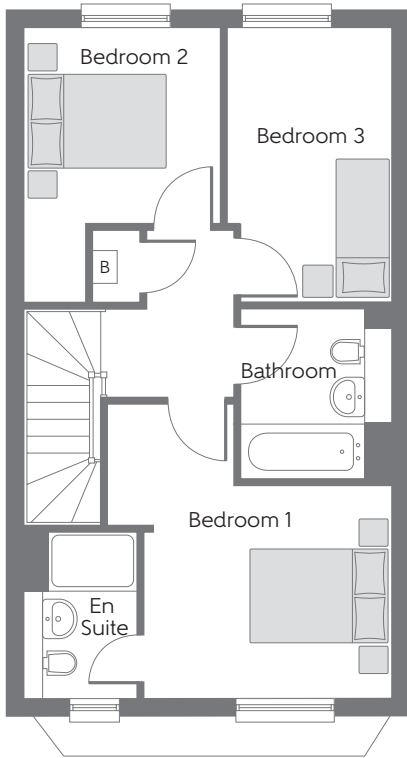
---



Bellway Homes Limited (Kent Division)  
30 Tower View, Kings Hill,  
West Malling, Kent ME19 4UY

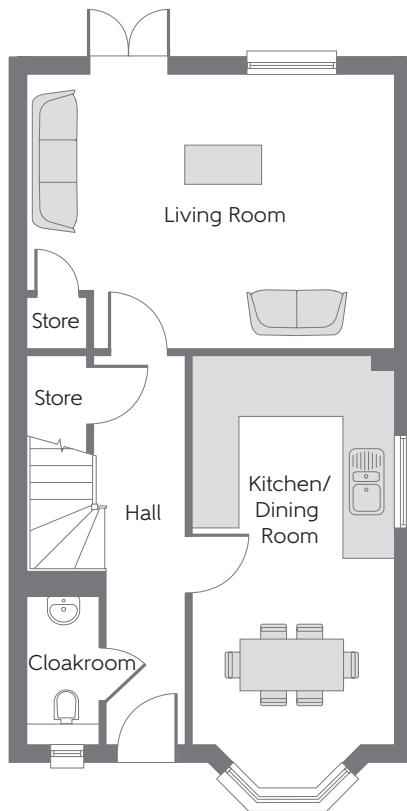
Telephone: 01732 879750  
[www.bellway.co.uk](http://www.bellway.co.uk)

**Bellway**



**First Floor**

Bedroom 1	3.970m x 2.884m	13'0" x 9'4"
Bedroom 2	2.640m x 2.660m	8'6" x 8'7"
Bedroom 3	3.740m x 2.200m	12'2" x 7'2"



**Ground Floor**

Kitchen /Dining Room	5.273m x 2.735m	17'2" x 8'9"
Living Room	4.950m x 3.740m	16'2" x 12'2"

**B** Boiler

Some items shown in this key may be subject to change, and positions could vary from those indicated on this floorplan. Please refer to Sales Advisor for details of your selected plot. Computer generated image shown overleaf. External finishes, landscaping and configuration may vary from plot to plot. Please refer to Sales Advisor for further details. All dimensions are approximate and represent the maximum room sizes, these should not be used for carpet sizes, appliance spaces or furniture. Furniture not to scale and all positions are indicative. We operate a policy of continuous improvement and individual features such as kitchen and bathroom layouts, doors, windows, garages and elevational treatments may vary from time to time. Additional casings may be found in cupboards for ducts services runs. Consequently these particulars should be treated as general guidance only and do not constitute a contract, part of a contract or a warranty. The Finberry V2. CJ-0802 Rev C1. 182759/06/18.