

The Bosworth

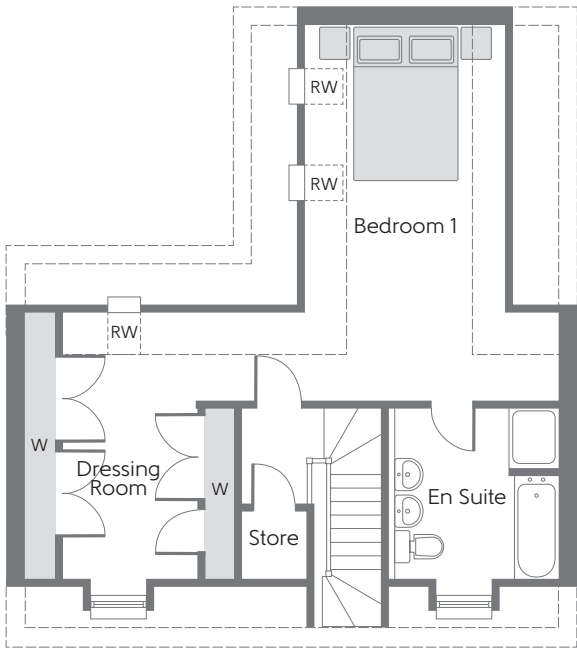
Five bedroom home



Bellway Homes Limited (East Midlands Division)
3 Romulus Court, Meridian East, Meridian Business Park,
Braunstone Town, Leicester LE19 1YG

Telephone: 0116 282 0408
Fax: 0116 282 0403
www.bellway.co.uk

Bellway

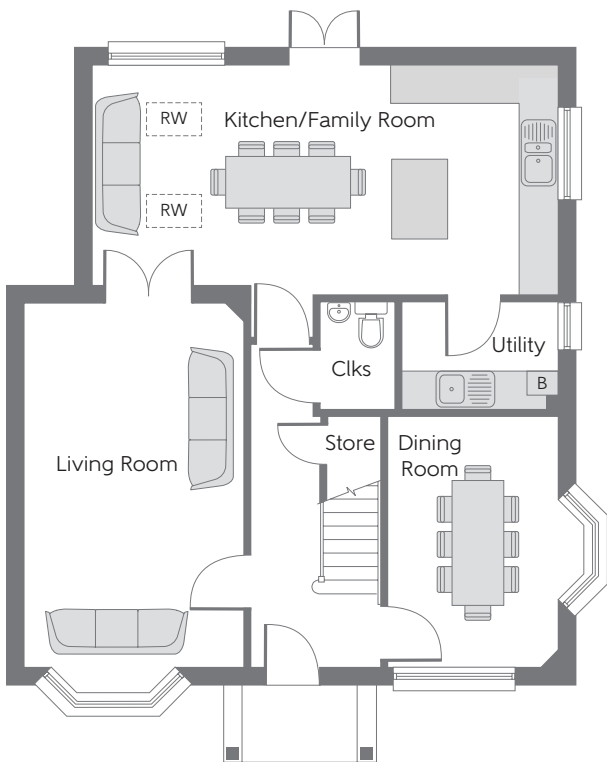
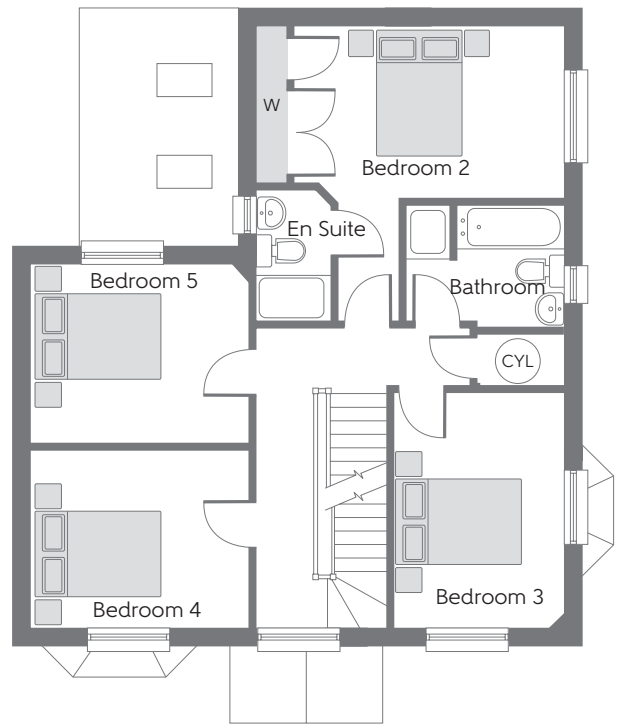


Second Floor

Bedroom 1	6.190m x 3.330m (max) (max)	20'4" x 10'11" (max) (max)
Dressing Room	4.460m x 2.240m (excl. ward.)	14'8" x 7'4" (excl. ward.)

First Floor

Bedroom 2	4.870m x 4.440m (max)	16'0" x 14'7" (max)
Bedroom 3	3.880m x 2.800m	12'9" x 9'2"
Bedroom 4	3.610m x 2.930m	11'10" x 9'7"
Bedroom 5	3.610m x 2.930m	11'10" x 9'7"



Ground Floor

Kitchen/ Family Room	7.650m x 4.470m (max) (max)	25'1" x 14'8" (max) (max)
Living Room	5.970m x 3.590m (excl. bay)	19'7" x 11'9" (excl. bay)
Dining Room	4.130m x 2.820m (excl. bay)	13'7" x 9'3" (excl. bay)

B Boiler
 CYL Hot Water Cylinder
 W Fitted Wardrobe
 Clks Cloakroom
RW Roof Window
 - - Reduced Head Height

Some items shown in this key may be subject to change, and positions could vary from those indicated on this floorplan. Please refer to Sales Advisor for details of your selected plot. Computer generated image shown overleaf. External finishes, landscaping and configuration may vary from plot to plot. Please refer to Sales Advisor for further details. All dimensions are approximate and should not be used for carpet sizes, appliance spaces, or furniture. Furniture not to scale and all positions are indicative. We operate a policy of continuous improvement and individual features such as kitchen and bathroom layouts, doors, windows, garages and elevational treatments may vary from time to time. Consequently these particulars should be treated as general guidance only and do not constitute a contract, part of a contract or a warranty. 175421/11/17.