

# The Stourton

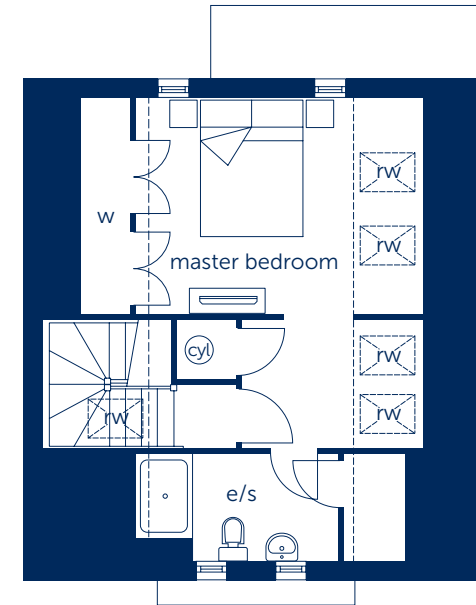
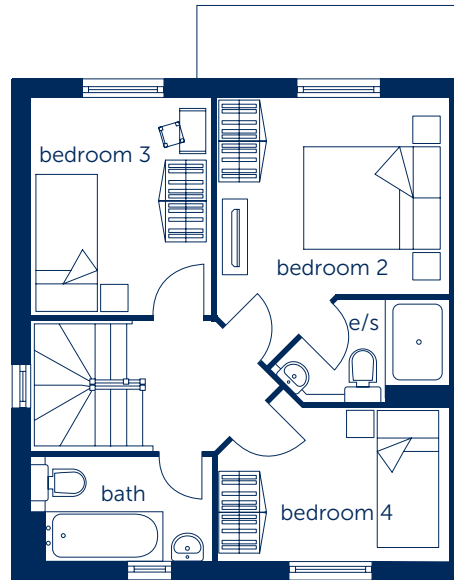
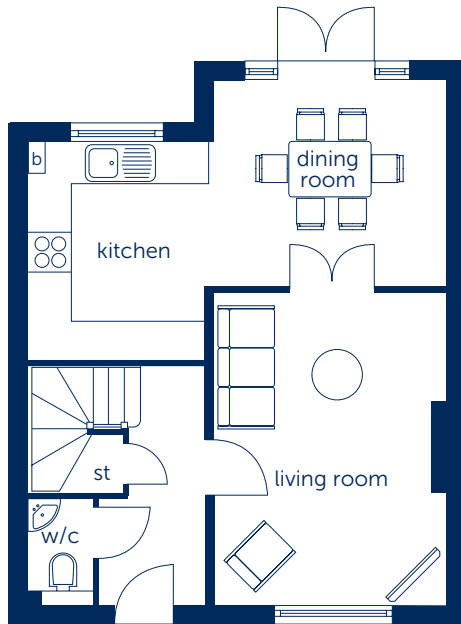
Four bedroom home



**Bellway**

# The Stourton

Four bedroom home



## Ground Floor

Living Room	3.16m* x 4.38m	10'5*** x 14'5"
Dining Room	3.16m x 2.90m	10'5" x 9'6"
Kitchen	2.55m x 3.02m	8'4" x 9'11"

## First Floor

Bedroom 2	3.18m x 2.72m	10'5" x 8'11"
Bedroom 3	2.58m x 3.02m	8'6" x 9'11"
Bedroom 4	3.18m* x 2.20m	10'5** x 7'3"

## Second Floor

Master Bedroom	4.10m x 3.02m	13'6" x 9'11"
----------------	---------------	---------------

b boiler   
 cy hot water cylinder   
 e/s en suite   
 - - - - reduced head height  
st cupboard   
 w wardrobe   
 rw roof window

\*Maximum dimension †Minimum dimension

Some items shown in this key may be subject to change, and positions could vary from those indicated on this floorplan. Please refer to Sales Advisor for details of your selected plot

Computer generated image shown overleaf. External finishes, landscaping and configuration may vary from plot to plot. Please refer to Sales Advisor for further details. All dimensions are approximate and should not be used for carpet sizes, appliance spaces, or furniture. Furniture not to scale and all positions are indicative. Wardrobes are shown to suggest position only, and are not included as standard unless otherwise stated. We operate a policy of continuous improvement and individual features such as kitchen and bathroom layouts, doors, windows, garages and elevational treatments may vary from time to time. Consequently these particulars should be treated as general guidance only and cannot be relied upon as accurately describing any of the Specified Matters prescribed by any order made under the Property Misdescriptions Act 1991. Nor do they constitute a contract, part of a contract or a warranty. 173538/06/17

Bellway Homes Ltd,  
 (Durham Division)  
 10 Pioneer Court,  
 Morton Palms Business Park,  
 Darlington,  
 County Durham DL1 4WD  
 Telephone 01325 744 844  
[www.bellway.co.uk](http://www.bellway.co.uk)