

# Seaford Heights

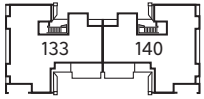
---



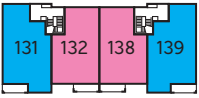
Bellway Homes Limited (Kent Division)  
30 Tower View, Kings Hill,  
West Malling, Kent ME19 4UY

Telephone: 01732 879750  
[www.bellway.co.uk](http://www.bellway.co.uk)

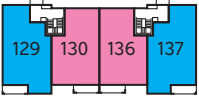
**Bellway**



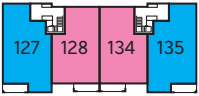
Third Floor



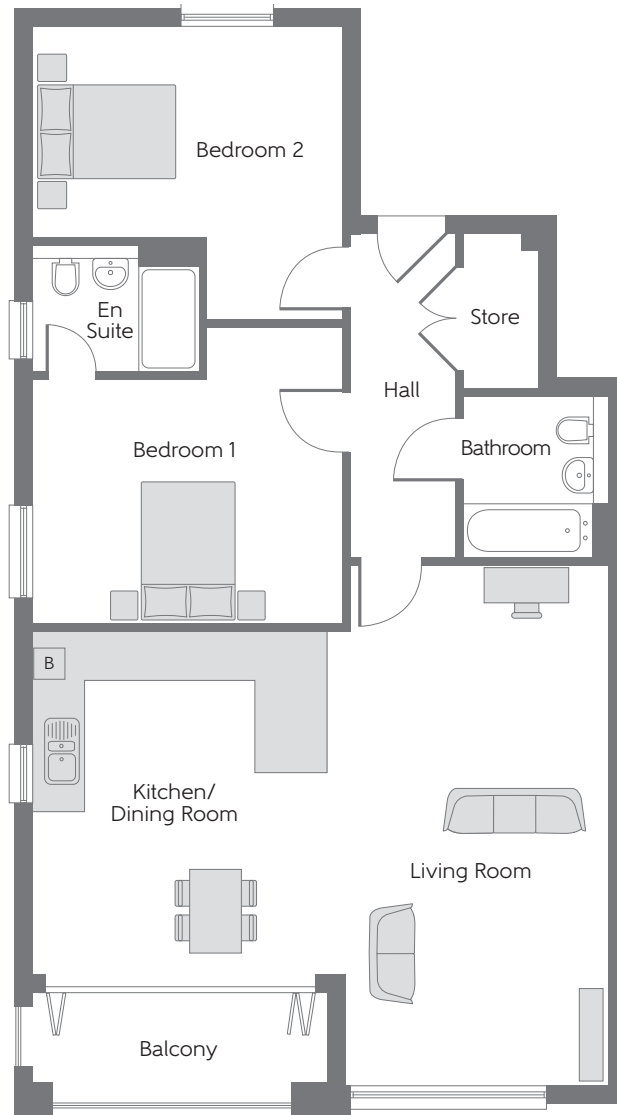
Second Floor



First Floor



Ground Floor

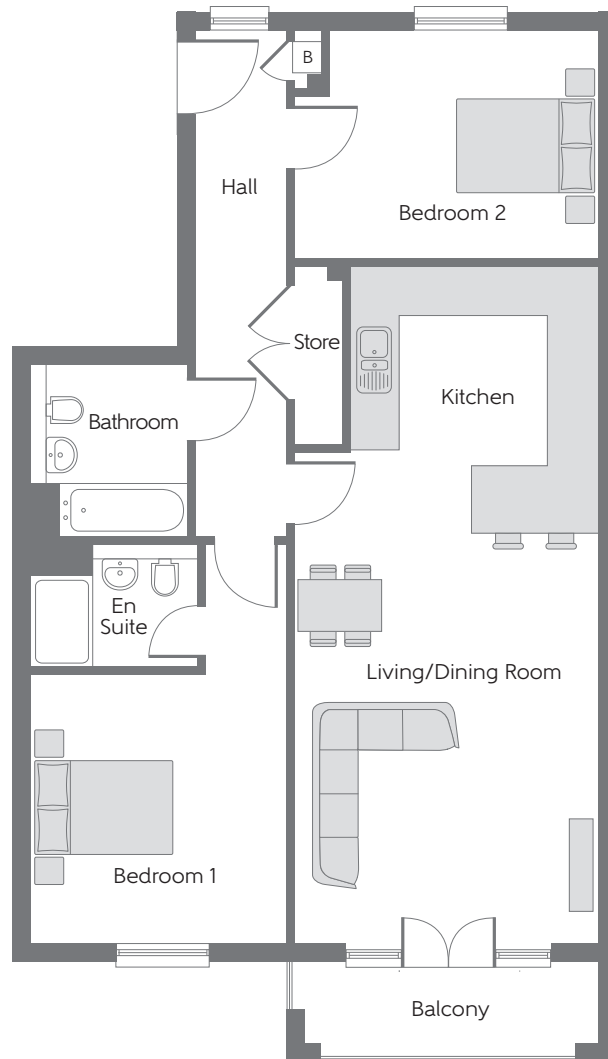


**The Rockall**

**Apartments 127, 129, 131, 135 (h), 137 (h) & 139 (h)**

Kitchen/Dining Room	4.515m x 4.138m	14'10" x 13'7"
Living Room	6.865m x 3.385m	22'6" x 11'1"
Bedroom 1	4.050m x 3.220m	13'3" x 10'7"
En Suite	2.165m x 1.689m	7'1" x 5'6"
Bedroom 2	4.050m x 2.761m	13'3" x 9'1"
Bathroom	2.120m x 1.900m	6'11" x 6'3"

(max) (min) (max) (min)  
(max) (max) (max) (max)  
(max) (min) (max) (min)  
(max) (max) (max) (max)



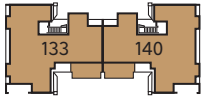
**The Shannon**  
**Apartments 128, 130, 132, 134 (h), 136 (h) & 138 (h)**

Kitchen	3.535m (max)	x 3.257m (max)	11'7" (max)	x 10'8" (max)
Living/Dining Room	5.402m	x 3.995m	17'9"	x 13'1"
Bedroom 1	3.544m (min)	x 3.362m (max)	11'8" (min)	x 11'0" (max)
En Suite	2.167m (max)	x 1.620m (max)	7'1" (max)	x 5'4" (max)
Bedroom 2	3.995m	x 3.010m	13'1"	x 9'11"
Bathroom	2.258m (max)	x 2.062m (max)	7'5" (max)	x 6'9" (max)

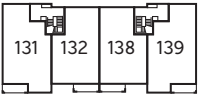
**B** - Boiler

**Furniture arrangements are for illustrative purposes only. Items are not included, nor to scale.**

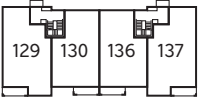
The items shown in this key may be subject to change, and positions could vary from those indicated on this floorplan. Please refer to Sales Advisor for details of your selected plot. Computer generated image shown overleaf. External finishes, landscaping and configuration may vary from plot to plot. Please refer to Sales Advisor for further details. All dimensions are approximate and should not be used for carpet sizes, appliance spaces or furniture. We operate a policy of continuous improvement and individual features such as kitchen and bathroom layouts, doors, windows, garages and elevational treatments may vary from time to time. Consequently these particulars should be treated as general guidance only and do not constitute a contract, part of a contract or a warranty.



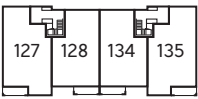
Third Floor



Second Floor



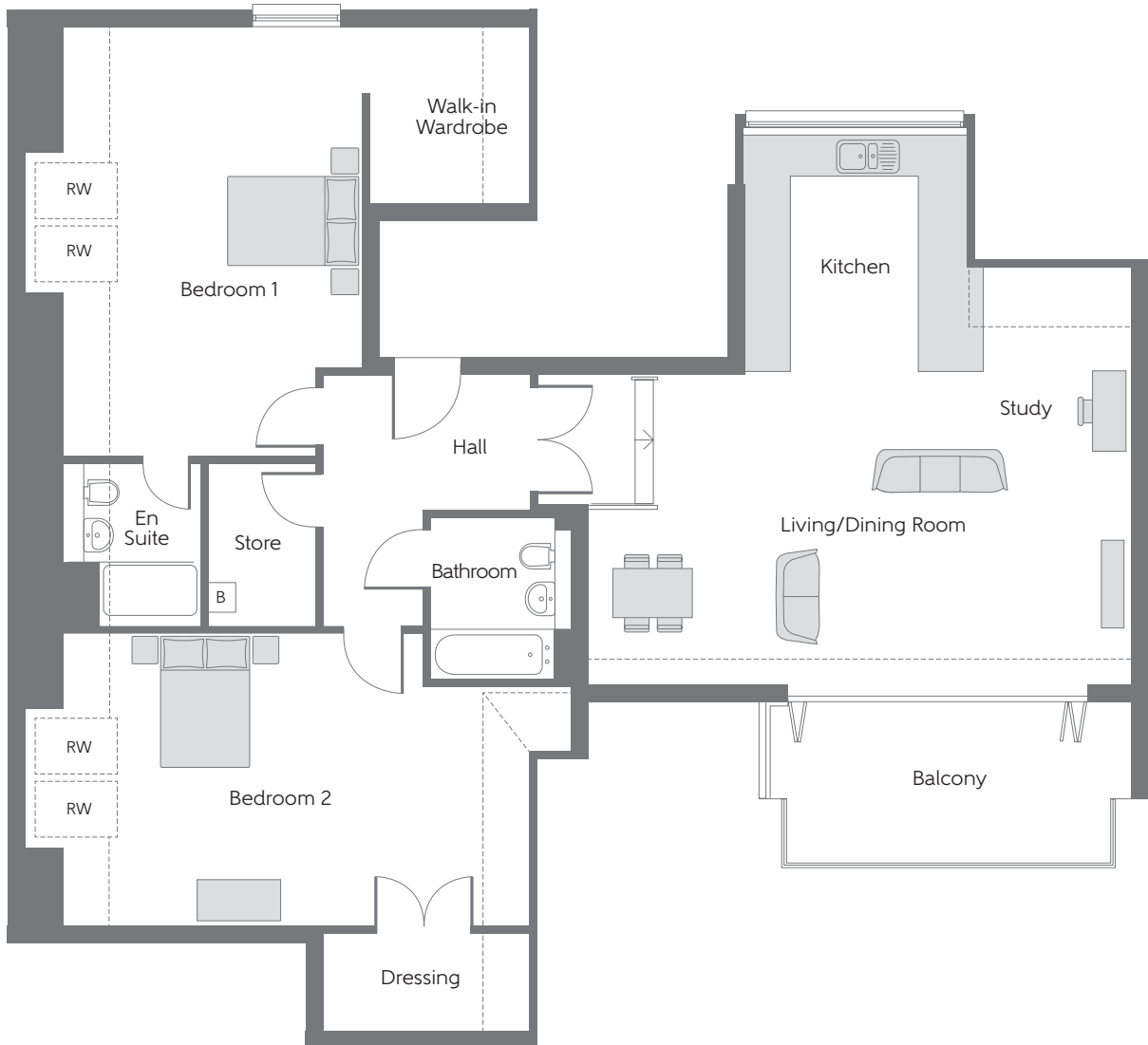
First Floor



Ground Floor

**The Thames**  
**Apartment 133 & 140 (h)**

Kitchen	3.401m x 2.989m	11'2" x 9'10"
Living/Dining Room	7.457m x 4.192m (min) (max)	24'6" x 13'9" (min) (max)
Bedroom 1	5.977m x 4.060m	19'7" x 13'4"
En Suite	2.177m x 1.832m (max) (max)	7'2" x 6'0" (max) (max)
Walk-in Wardrobe	2.410m x 1.938m	7'11" x 6'4"
Bedroom 2	6.348m x 4.044m (min) (max)	20'10" x 13'3" (min) (max)
Dressing	2.785m x 1.363m	9'2" x 4'6"
Bathroom	2.270m x 1.900m (max) (max)	7'5" x 6'3" (max) (max)



**B** - Boiler    - - - - Reduced Head Height    **RW** - Roof Window

**Furniture arrangements are for illustrative purposes only. Items are not included, nor to scale.**

The items shown in this key may be subject to change, and positions could vary from those indicated on this floorplan. Please refer to Sales Advisor for details of your selected plot. Computer generated image shown overleaf. External finishes, landscaping and configuration may vary from plot to plot. Please refer to Sales Advisor for further details. All dimensions are approximate and should not be used for carpet sizes, appliance spaces or furniture. We operate a policy of continuous improvement and individual features such as kitchen and bathroom layouts, doors, windows, garages and elevational treatments may vary from time to time. Consequently these particulars should be treated as general guidance only and do not constitute a contract, part of a contract or a warranty. 210381/03/21.