

Parco House

One and two bedroom homes

Apartments 441- 470



Bellway Homes Limited (Essex Division)
Bellway House, 1 Cunard Square,
Townfield Street, Chelmsford,
Essex CM1 1AQ

Telephone: 01245 259989
www.bellway.co.uk

Bellway



Third Floor



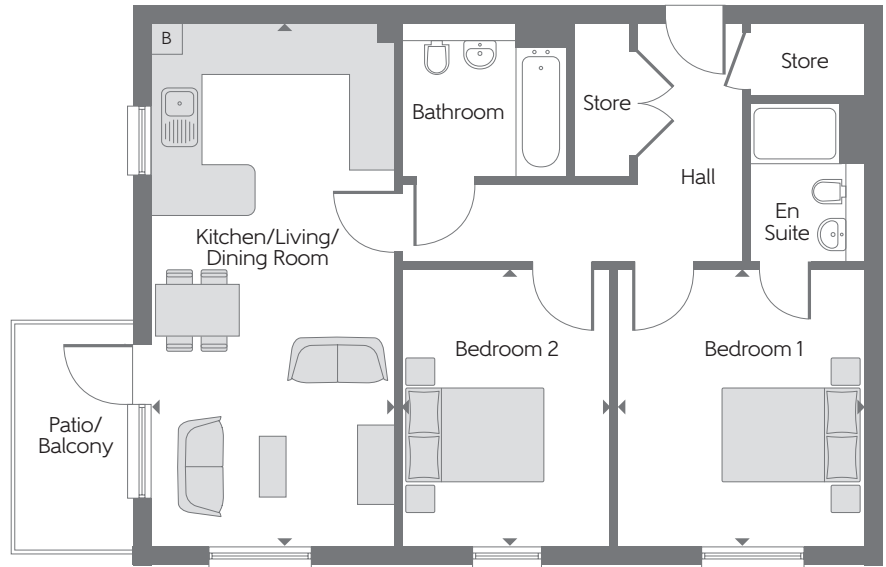
Second Floor



First Floor



Ground Floor



The Redshank A

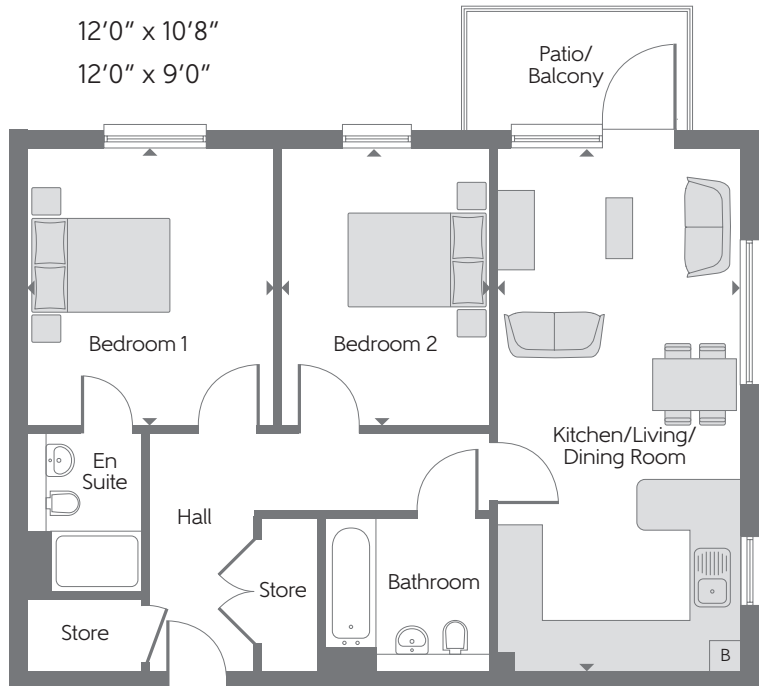
Apartments 441*, 446, 447*, 454, 455*, 462, 463* & 470

Kitchen/Living/Dining Room	6.880m x 3.200m	22'7" x 10'6"
Bedroom 1	3.650m x 3.260m	12'0" x 10'8"
Bedroom 2	3.650m x 2.750m	12'0" x 9'0"

The Redshank A

Apartments 442, 450, 458 & 466

Kitchen/Living/Dining Room	6.880m x 3.200m	22'7" x 10'6"
Bedroom 1	3.650m x 3.260m	12'0" x 10'8"
Bedroom 2	3.650m x 2.750m	12'0" x 9'0"



* Handed plots

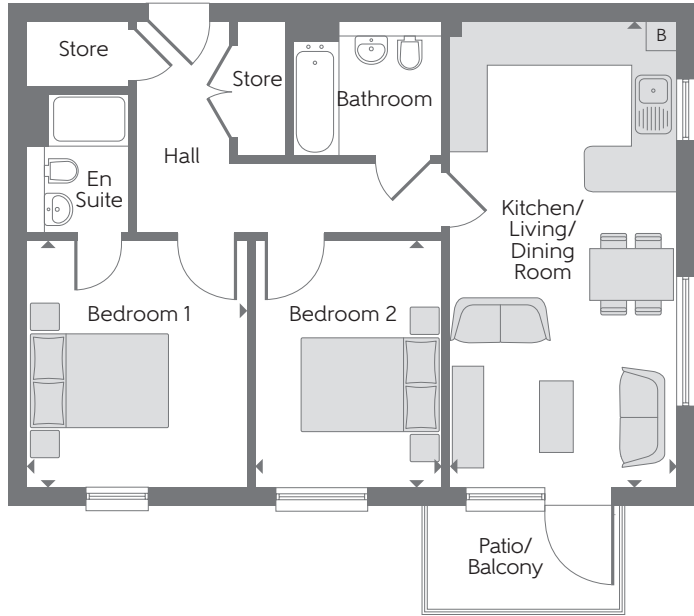
B Boiler **▶** Indicates where dimensions are taken from **B/S** Bin store **C/S** Cycle store **L** Lift

Some items shown in this key may be subject to change, and positions could vary from those indicated on this floorplan. Please refer to Sales Advisor for details of your selected plot. Computer generated image shown overleaf. External finishes and landscaping may vary from plot to plot. Please refer to Sales Advisor for further details. All dimensions are approximate and should not be used for carpet sizes, appliance spaces, or furniture. Furniture not to scale and all positions are indicative. We operate a policy of continuous improvement and individual features such as kitchen and bathroom layouts, doors, windows, garages and elevational treatments may vary from time to time. Consequently these particulars should be treated as general guidance only and do not constitute a contract, part of a contract or a warranty. 00810-02/12/21.

The Redshank E

Apartments 443, 451, 459 & 467

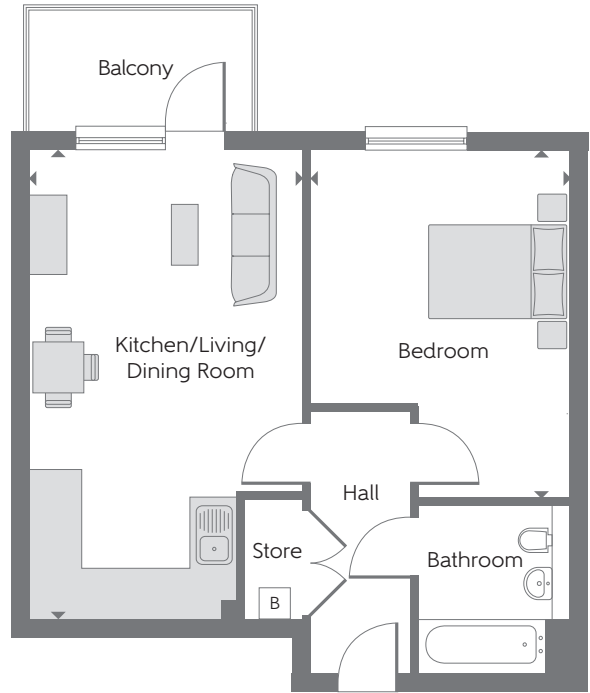
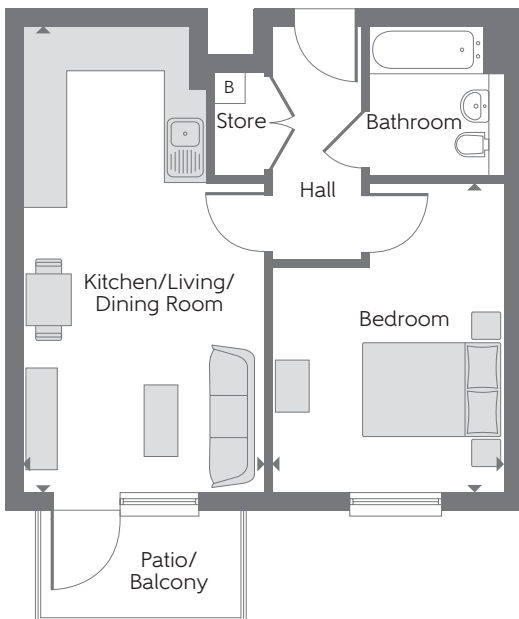
Kitchen/Living/ Dining Room	6.880m x 3.390m	22'7" x 11'1"
Bedroom 1	3.650m x 3.260m	12'0" x 10'8"
Bedroom 2	3.650m x 2.750m	12'0" x 9'0"



The Sandpiper D

Apartments 445, 453, 461 & 469

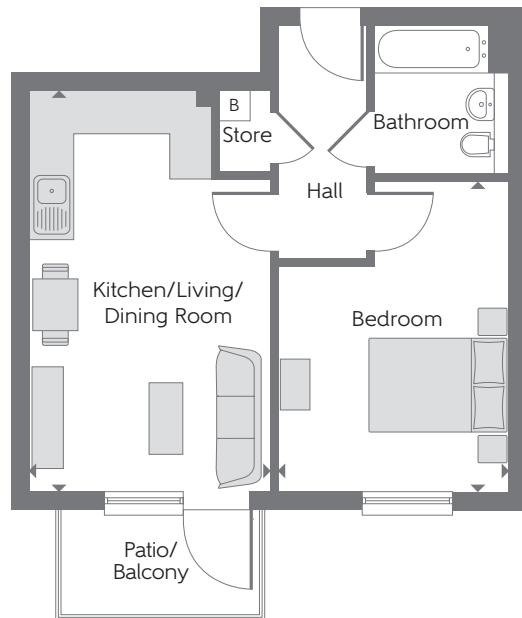
Kitchen/Living/ Dining Room	6.880m x 3.600m	22'7" x 11'10"
Bedroom	3.650m x 3.260m	12'0" x 10'8"



The Sandpiper B

Apartments 448, 449, 456, 457, 464 & 465

Kitchen/Living/ Dining Room	6.190m x 3.600m	20'4" x 11'10"
Bedroom	3.650m x 3.260m	12'0" x 10'8"



The Sandpiper C

Apartments 444, 452, 460 & 468

Kitchen/Living/ Dining Room	5.940m x 3.600m	19'6" x 11'10"
Bedroom	3.650m x 3.260m	12'0" x 10'8"

The Bellway logo is positioned at the bottom center of the page. It features the word "Bellway" in a white, sans-serif font. A thin orange line is positioned below the "a" and "y", starting under the "a" and ending under the "y", creating a stylized underline or swoosh.

Bellway