

The Sewell

Three bedroom home

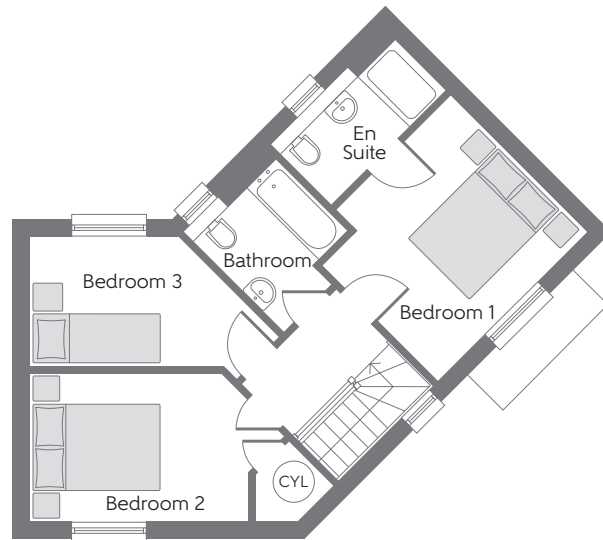
Plots 164 & 165



Bellway Homes Limited (Northern Home Counties Division)
Building 5, Caldecotte Lake Drive, Caldecotte,
Milton Keynes MK7 8LE

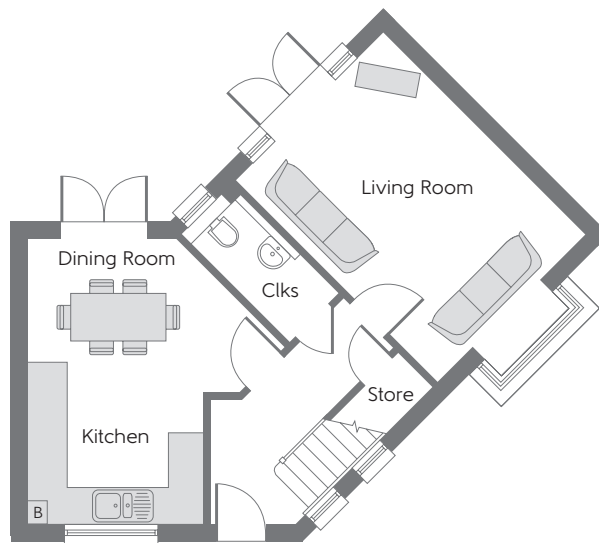
Telephone: 01908 364200
Fax: 01908 364201
www.bellway.co.uk

Bellway



First Floor

Bedroom 1	3.230m x 3.200m (max) (max)	10'7" x 10'6" (max) (max)
Bedroom 2	4.250m x 2.490m (max) (max)	13'11" x 8'2" (max) (max)
Bedroom 3	4.150m x 2.155m (max) (max)	13'7" x 7'1" (max) (max)



Ground Floor

Kitchen	2.910m x 2.450m	9'7" x 8'0"
Living Room	4.740m x 3.145m	15'7" x 10'4"
Dining Room	4.285m x 2.290m (max) (max)	14'1" x 7'6" (max) (max)

B Boiler Clks Cloakroom **CYL** Hot Water Cylinder

Some items shown in this key may be subject to change, and positions could vary from those indicated on this floorplan. Please refer to Sales Advisor for details of your selected plot. Computer generated image shown overleaf. External finishes, landscaping and configuration may vary from plot to plot. Please refer to Sales Advisor for further details. All dimensions are approximate and should not be used for carpet sizes, appliance spaces or furniture. Furniture not to scale and all positions are indicative. We operate a policy of continuous improvement and individual features such as kitchen and bathroom layouts, doors, windows, garages and elevational treatments may vary from time to time. Consequently these particulars should be treated as general guidance only and do not constitute a contract, part of a contract or a warranty. 00382-17/08/21.