

The Coppersmith

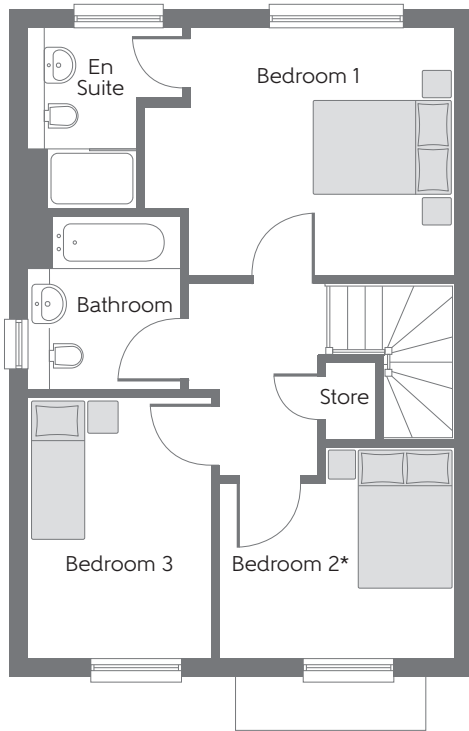
Three bedroom home



Bellway Homes Limited (Thames Gateway Division)
Bellway House, Anchor Boulevard, Crossways Business Park,
Dartford, Kent DA2 6QH

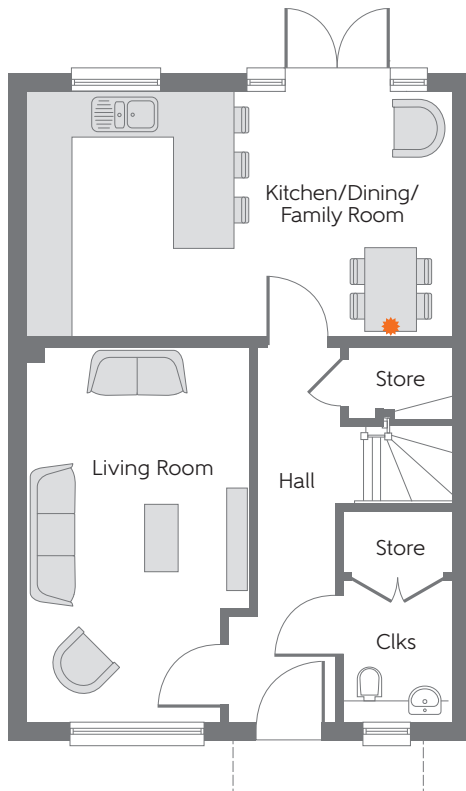
Telephone: 01689 886400
www.bellway.co.uk

Bellway



First Floor

Bedroom 1	4.119m x 3.256m (max)	13'6" x 10'8" (max)
Bedroom 2	3.456m x 2.550m	11'4" x 8'4"
Bedroom 3	2.997m x 2.646m (max)	9'10" x 8'8" (max)



Ground Floor

Kitchen/Dining/ Family Room	5.635m x 3.256m	18'6" x 10'8"
Living Room	4.991m x 2.959m	16'4" x 9'8"

Clks Cloakroom • Suggested working from home area with USB socket

*Please refer to Sales Advisor for electrical layout. Some items shown in this key may be subject to change, and positions could vary from those indicated on this floorplan. Please refer to Sales Advisor for details of your selected plot. Computer generated image shown overleaf. External finishes, landscaping and configuration may vary from plot to plot. Please refer to Sales Advisor for further details. All dimensions are approximate and should not be used for carpet sizes, appliance spaces or furniture. Furniture not to scale and all positions are indicative. We operate a policy of continuous improvement and individual features such as kitchen and bathroom layouts, doors, windows, garages and elevational treatments may vary from time to time. Consequently these particulars should be treated as general guidance only and do not constitute a contract, part of a contract or a warranty. 219636/07/21.