

# Arch Block Apartments

---



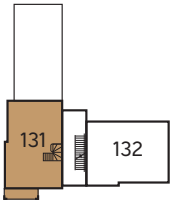
Off Churchland Way,  
Wolvershill Road,  
Weston-super-Mare,  
Somerset  
BS24 7FH

Telephone: 01749 301 646  
[www.bellway.co.uk](http://www.bellway.co.uk)

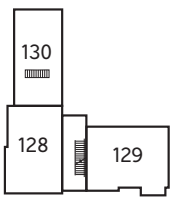
**Bellway**



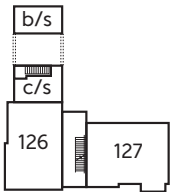
Third Floor



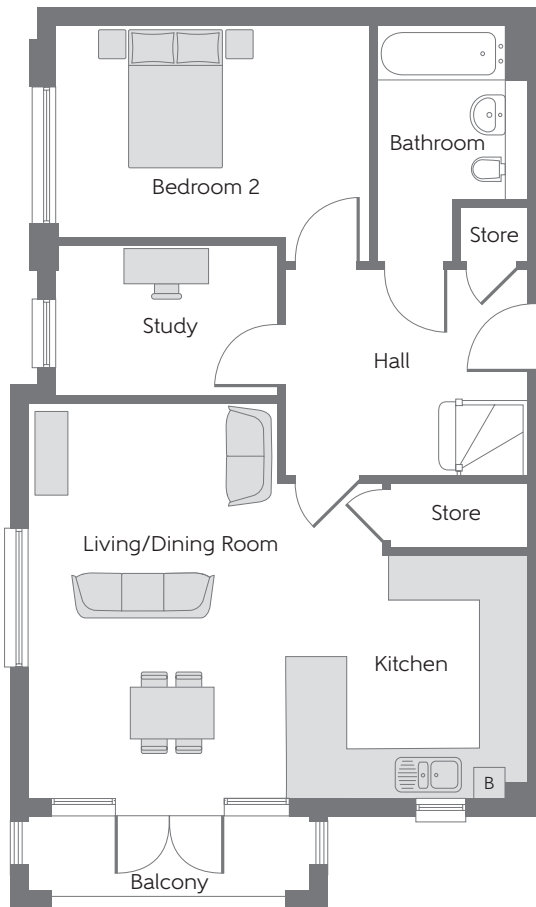
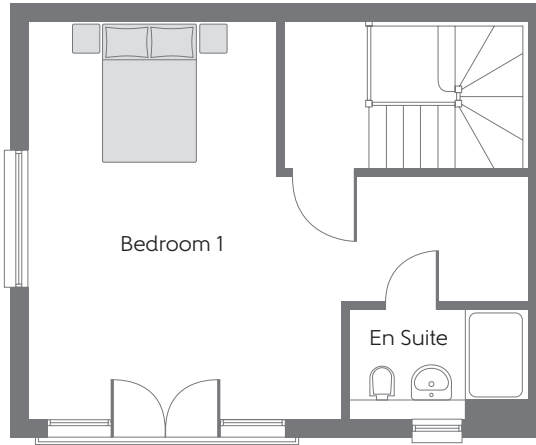
Second Floor



First Floor



Ground Floor



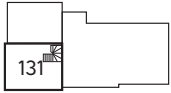
### The Holm Apartment 131

Kitchen	3.200m x 3.175m	10'6" x 10'5"
Living/Dining Room	5.185m x 3.360m	17'0" x 11'0"
Bedroom 1	5.180m x 4.135m	17'0" x 13'7"
Bedroom 2	4.145m x 3.110m	13'7" x 10'2"

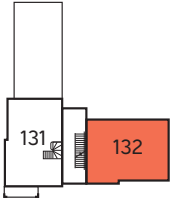
**B** - Boiler    **c/s** - Cycle Store    **b/s** - Bin Store

**Furniture arrangements are for illustrative purposes only. Items are not included, nor to scale.**

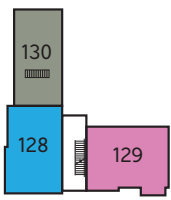
The items shown in this key may be subject to change, and positions could vary from those indicated on this floorplan. Please refer to Sales Advisor for details of your selected plot. Computer generated image shown overleaf. External finishes and landscaping may vary. Please refer to Sales Advisor for further details. All dimensions are approximate and should not be used for carpet sizes, appliance spaces or furniture. We operate a policy of continuous improvement and individual features such as kitchen and bathroom layouts, doors, windows, garages and elevational treatments may vary from time to time. Consequently these particulars should be treated as general guidance only and do not constitute a contract, part of a contract or a warranty. 222951/06/21.



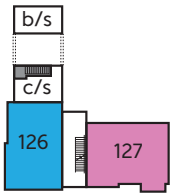
Third Floor



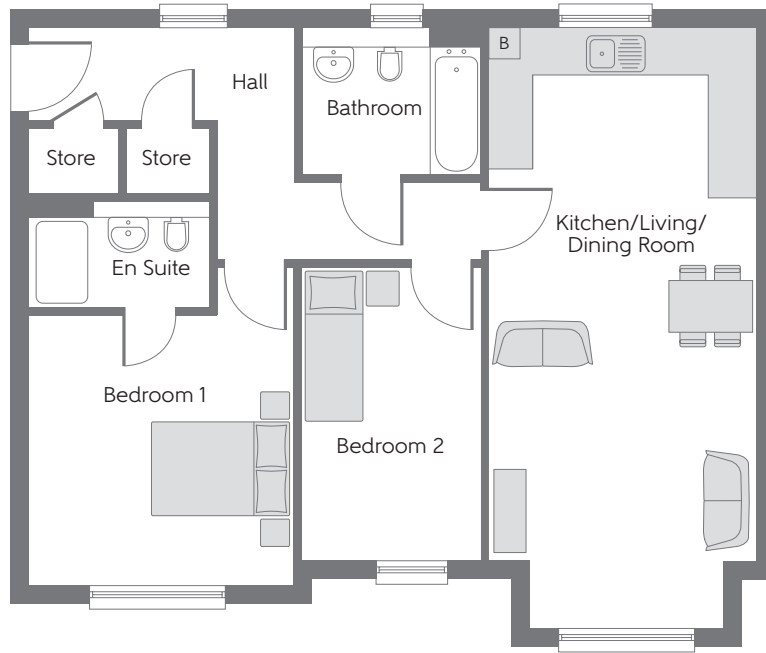
Second Floor



First Floor

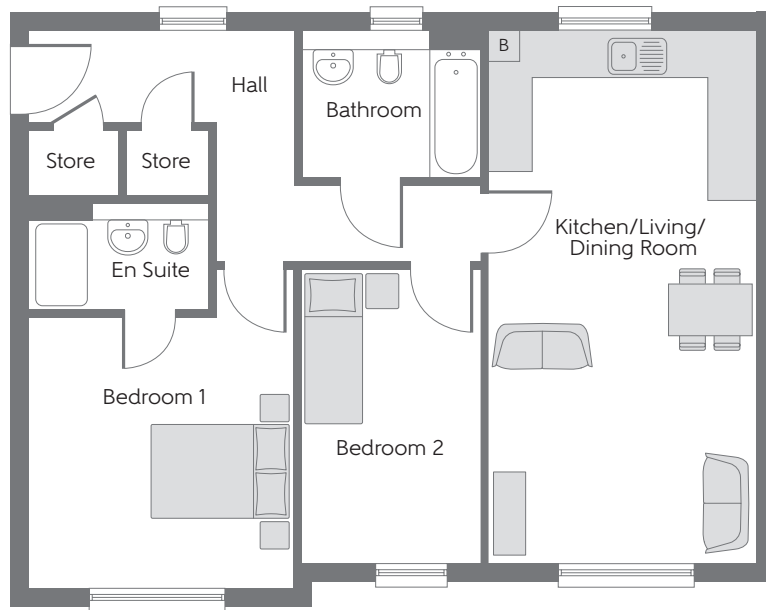


Ground Floor



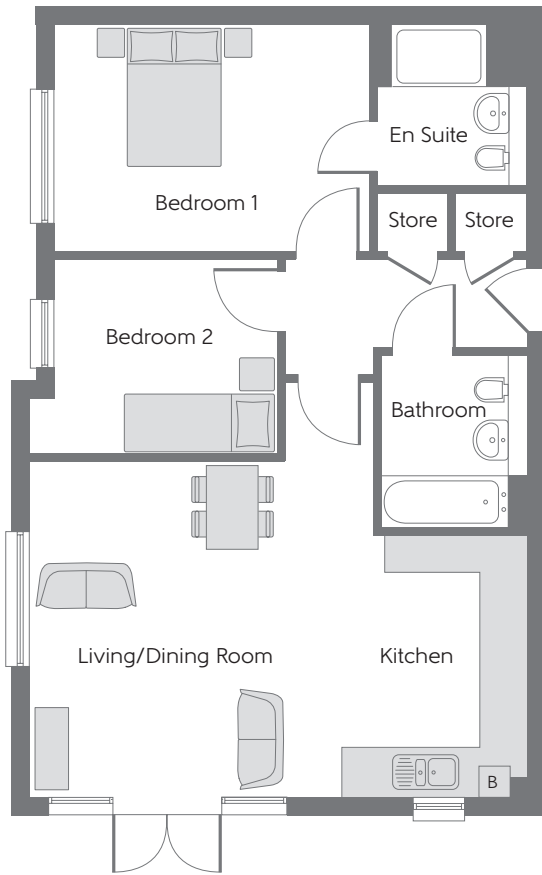
**The Birnbeck**  
Apartments 127 & 129

Kitchen/Living/ Dining Room	7.934m x 3.569m	24'2" x 11'7"
Bedroom 1	4.200m x 3.475m	13'9" x 11'5"
Bedroom 2	3.860m x 2.400m	12'8" x 7'10"



**The Grove**  
Apartment 132

Kitchen/Living/ Dining Room	7.034m x 3.578m	22'9" x 11'7"
Bedroom 1	4.200m x 3.475m	13'9" x 11'5"
Bedroom 2	3.860m x 2.400m	12'8" x 7'10"

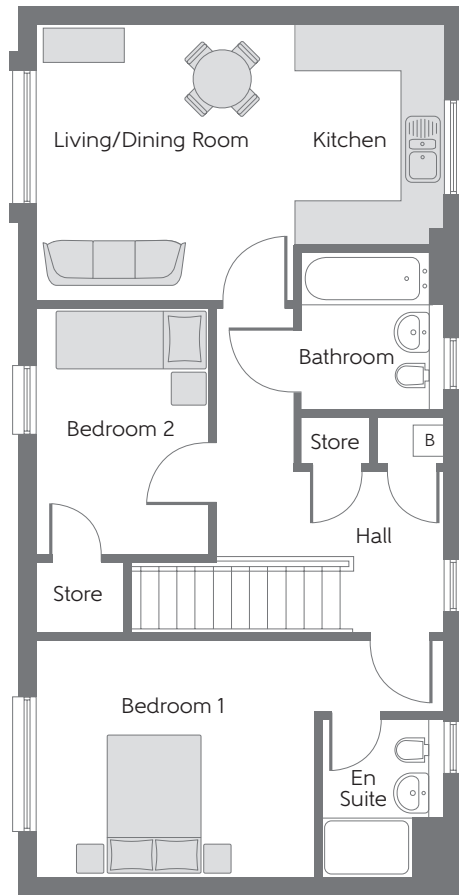
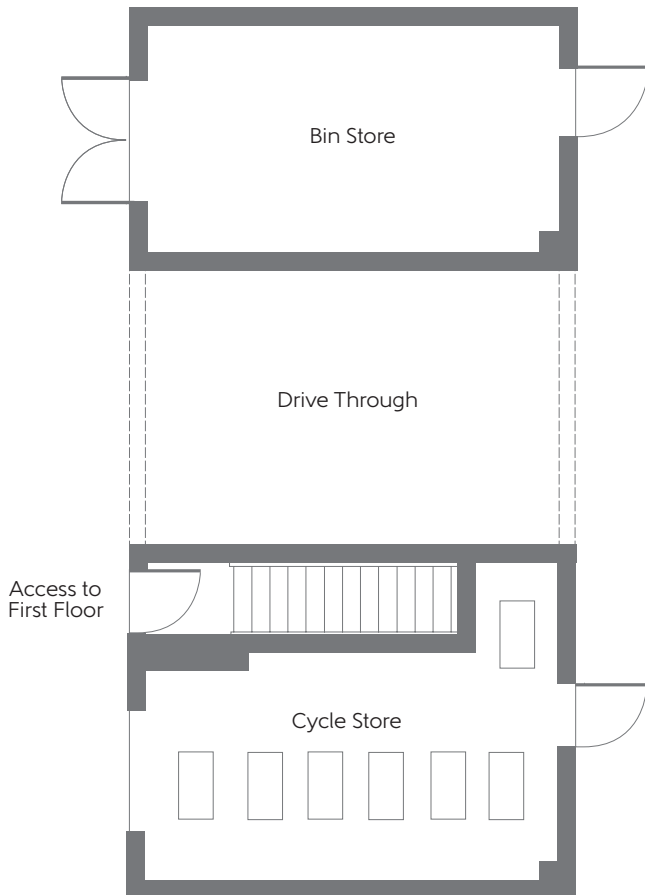


**The Knightstone**  
**Apartments 126 & 128**

Kitchen	3.425m x 2.400m	11'3" x 7'10"
Living/Dining Room	4.398m x 4.130m	14'5" x 13'7"
Bedroom 1	4.150m x 2.990m	13'7" x 9'10"
Bedroom 2	3.270m x 2.600m	10'9" x 8'6"

**The Weston**  
**Apartment 130**

Kitchen	2.920m x 2.000m	9'7" x 6'7"
Living/Dining Room	3.665m x 3.400m	12'0" x 11'2"
Bedroom 1	5.400m x 3.152m <small>(max)</small>	17'9" x 10'4" <small>(max)</small>
Bedroom 2	3.278m x 2.285m	10'9" x 7'6"



**B** - Boiler    **c/s** - Cycle Store    **b/s** - Bin Store

**Furniture arrangements are for illustrative purposes only. Items are not included, nor to scale.**

The items shown in this key may be subject to change, and positions could vary from those indicated on this floorplan. Please refer to Sales Advisor for details of your selected plot. Computer generated image shown overleaf. External finishes and landscaping may vary. Please refer to Sales Advisor for further details. All dimensions are approximate and should not be used for carpet sizes, appliance spaces or furniture. We operate a policy of continuous improvement and individual features such as kitchen and bathroom layouts, doors, windows, garages and elevational treatments may vary from time to time. Consequently these particulars should be treated as general guidance only and do not constitute a contract, part of a contract or a warranty.