

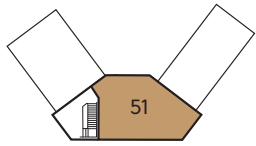
Pier Block Apartments



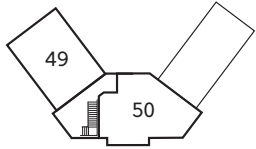
Off Churchland Way,
Wolvershill Road,
Weston-super-Mare,
Somerset
BS24 7FH

Telephone: 01749 301 646
www.bellway.co.uk

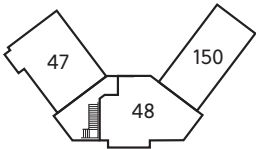
Bellway



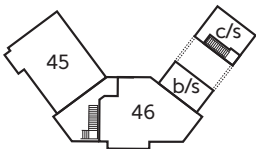
Third Floor



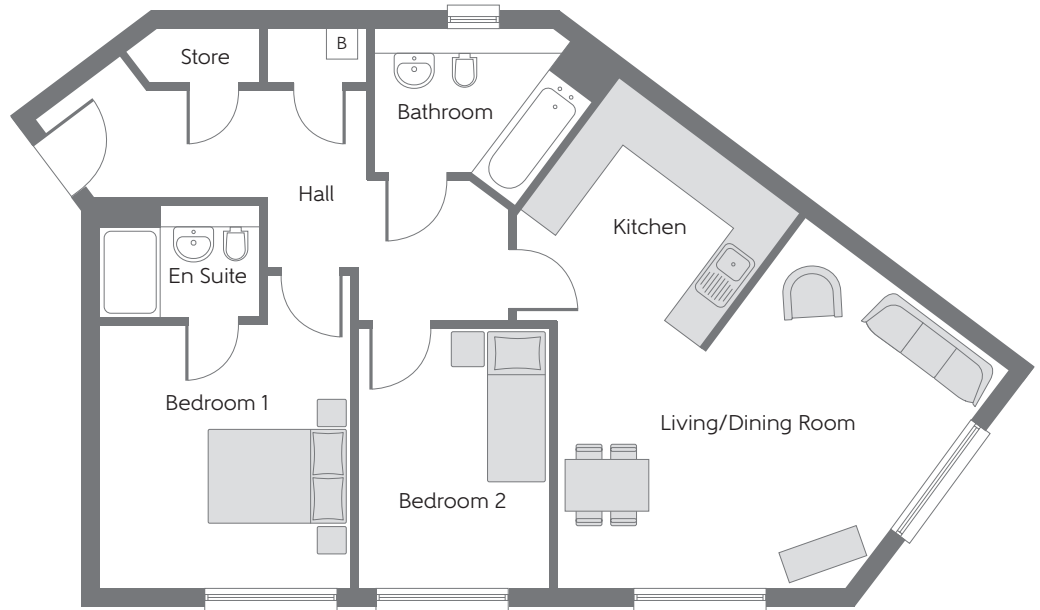
Second Floor



First Floor



Ground Floor



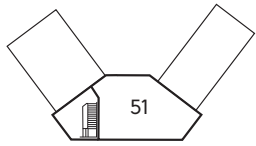
**The Puxton
Apartment 51**

Kitchen	3.050m x 2.200m	10'0" x 7'3"
Living/Dining Room	5.200m x 4.850m	17'1" x 15'11"
Bedroom 1	4.125m x 3.320m	13'6" x 10'11"
Bedroom 2	3.400m x 2.530m	11'2" x 8'4"

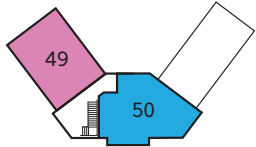
B - Boiler c/s - Cycle Store b/s - Bin Store

Furniture arrangements are for illustrative purposes only. Items are not included, nor to scale.

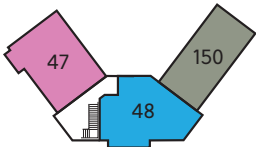
The items shown in this key may be subject to change, and positions could vary from those indicated on this floorplan. Please refer to Sales Advisor for details of your selected plot. Computer generated image shown overleaf. External finishes and landscaping may vary. Please refer to Sales Advisor for further details. All dimensions are approximate and should not be used for carpet sizes, appliance spaces or furniture. We operate a policy of continuous improvement and individual features such as kitchen and bathroom layouts, doors, windows, garages and elevational treatments may vary from time to time. Consequently these particulars should be treated as general guidance only and do not constitute a contract, part of a contract or a warranty. 222951/06/21.



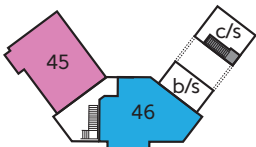
Third Floor



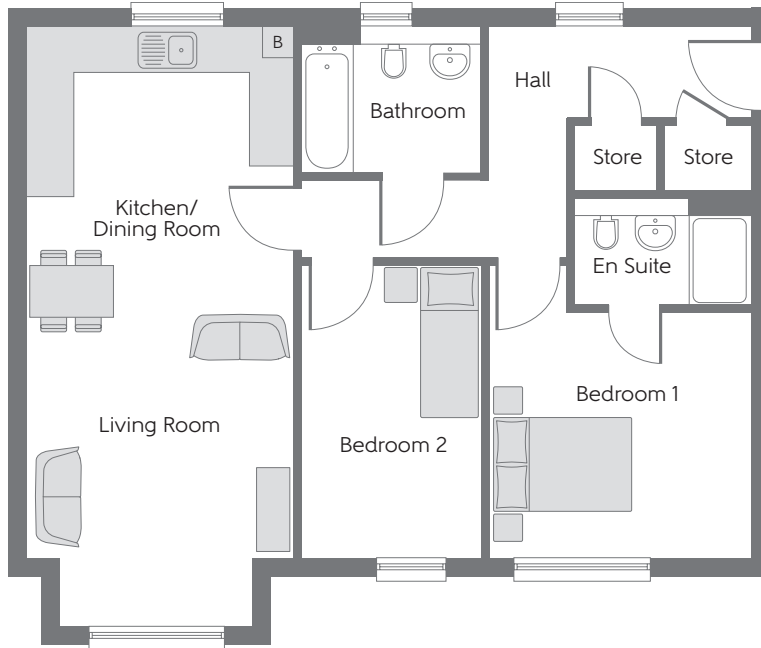
Second Floor



First Floor

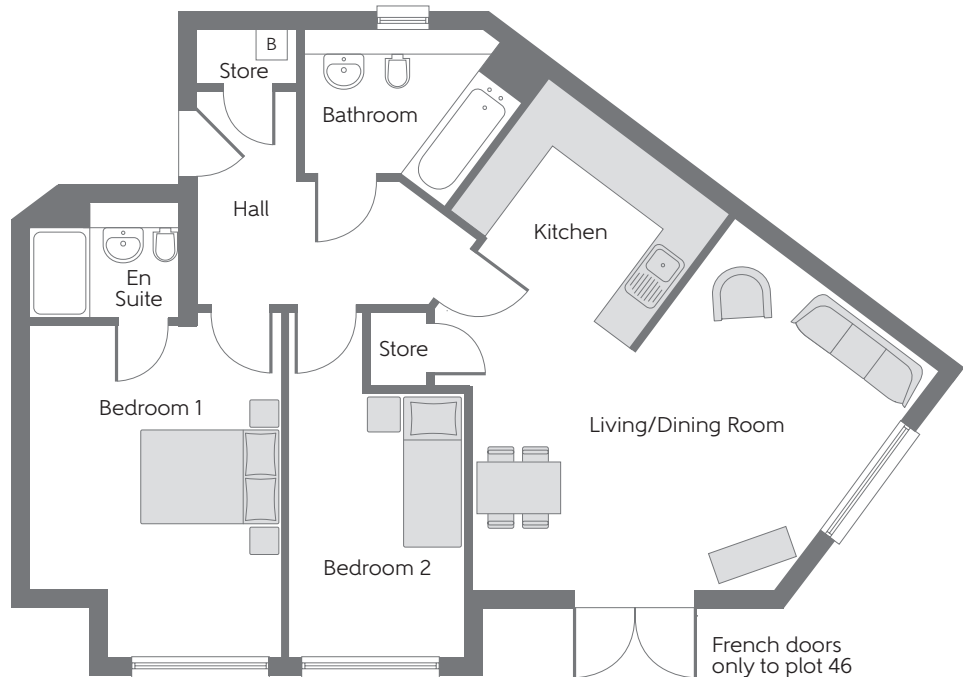


Ground Floor



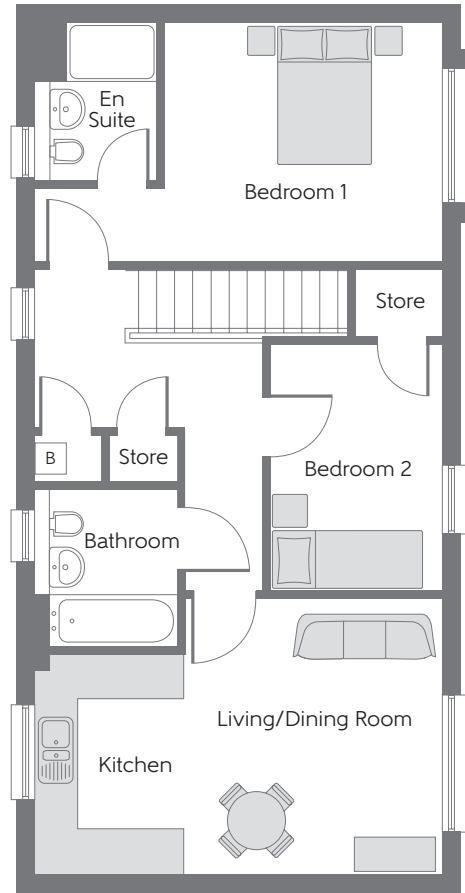
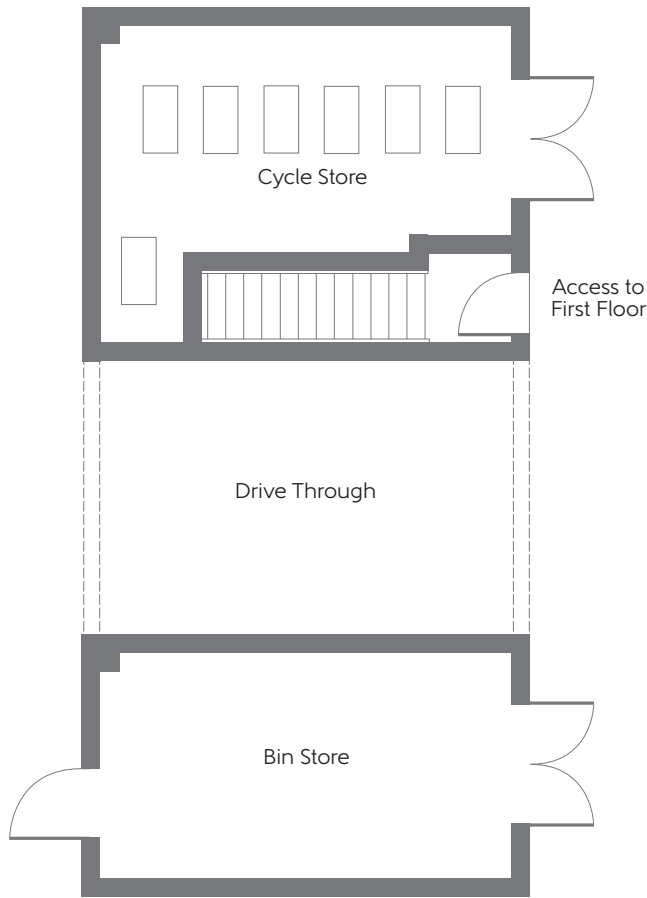
The Worlebury
Apartments 45, 47 & 49

Kitchen/Dining Room	3.920m x 3.525m	12'10" x 11'7"
Living Room	3.967m x 3.525m	13'0" x 11'7"
Bedroom 1	3.860m x 3.475m	12'8" x 11'5"
Bedroom 2	3.860m x 2.400m	12'8" x 7'10"



The Bleadon
Apartments 46, 48 & 50

Kitchen	3.050m x 2.200m	10'0" x 7'3"
Living/Dining Room	4.900m x 4.830m	16'1" x 15'10"
Bedroom 1	4.575m x 3.325m	15'0" x 10'11"
Bedroom 2	4.575m x 2.330m	15'0" x 7'8"



The Berrow
Apartment 150

Kitchen	2.920m x 2.000m	9'7" x 6'7"
Living/Dining Room	3.665m x 3.400m	12'0" x 11'2"
Bedroom 1	5.400m x 3.152m (max)	17'9" x 10'4" (max)
Bedroom 2	3.278m x 2.285m	10'9" x 7'6"

B - Boiler c/s - Cycle Store b/s - Bin Store

Furniture arrangements are for illustrative purposes only. Items are not included, nor to scale.

The items shown in this key may be subject to change, and positions could vary from those indicated on this floorplan. Please refer to Sales Advisor for details of your selected plot. Computer generated image shown overleaf. External finishes and landscaping may vary. Please refer to Sales Advisor for further details. All dimensions are approximate and should not be used for carpet sizes, appliance spaces or furniture. We operate a policy of continuous improvement and individual features such as kitchen and bathroom layouts, doors, windows, garages and elevational treatments may vary from time to time. Consequently these particulars should be treated as general guidance only and do not constitute a contract, part of a contract or a warranty.