

# The Swithland

Five bedroom home

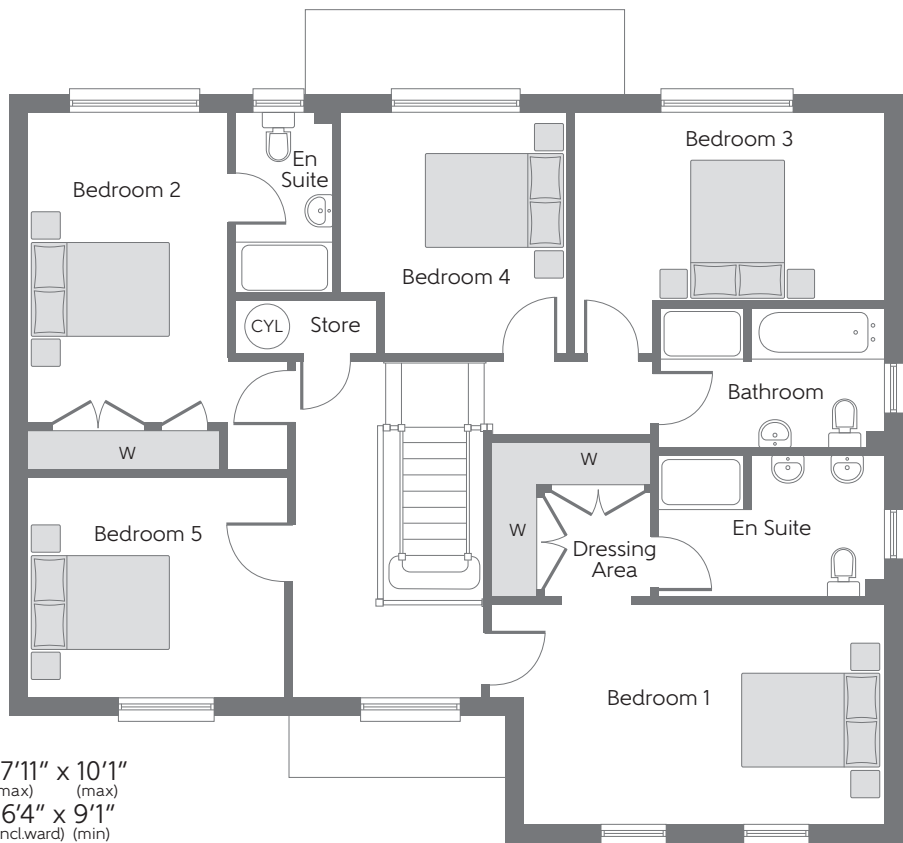
---



Bellway Homes Limited (East Midlands Division)  
3 Romulus Court, Meridian East, Meridian Business Park,  
Braunstone Town, Leicester LE19 1YG

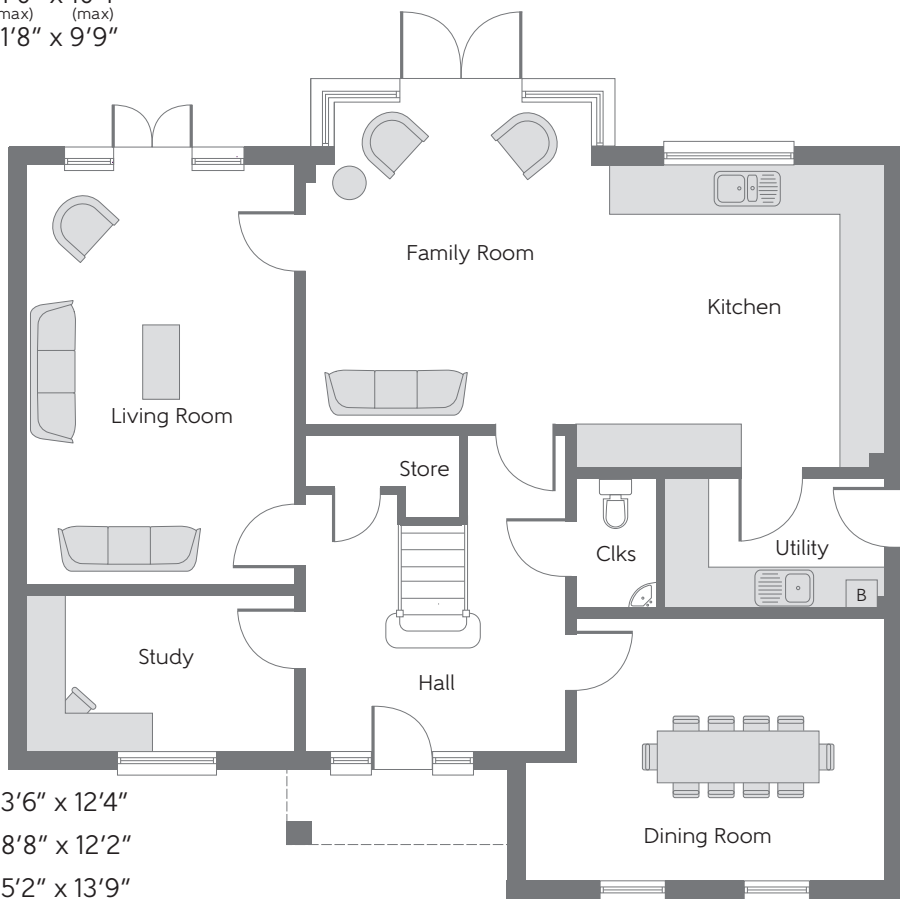
Telephone: 01949 222 691

**Bellway**



**First Floor**

Bedroom 1	5.455m x 3.075m (max) (max)	17'11" x 10'1" (max) (max)
Bedroom 2	4.990m x 2.770m (incl.ward) (min)	16'4" x 9'1" (incl.ward) (min)
Bedroom 3	4.290m x 2.600m (max) (min)	14'8" x 8'5" (max) (min)
Bedroom 4	3.350m x 3.180m (max) (max)	11'0" x 10'4" (max) (max)
Bedroom 5	3.620m x 3.020m	11'8" x 9'9"



**Ground Floor**

Kitchen	4.150m x 3.800m	13'6" x 12'4"
Living Room	5.750m x 3.740m	18'8" x 12'2"
Family Room	4.630m x 4.240m	15'2" x 13'9"
Dining Room	4.950m x 3.650m (max) (max)	16'2" x 11'9" (max) (max)
Study	3.740m x 2.200m	12'2" x 7'2"

**B** Boiler    **Clks** Cloakroom    **W** Fitted Wardrobe    **CYL** Hot Water Cylinder

Some items shown in this key may be subject to change, and positions could vary from those indicated on this floorplan. Please refer to Sales Advisor for details of your selected plot. Computer generated image shown overleaf. External finishes, landscaping and configuration may vary from plot to plot. Please refer to Sales Advisor for further details. All dimensions are approximate and should not be used for carpet sizes, appliance spaces, or furniture. Furniture not to scale and all positions are indicative. We operate a policy of continuous improvement and individual features such as kitchen and bathroom layouts, doors, windows, garages and elevational treatments may vary from time to time. Consequently these particulars should be treated as general guidance only and do not constitute a contract, part of a contract or a warranty. 219429/02/21.