

# The Cottesmore

Four bedroom home

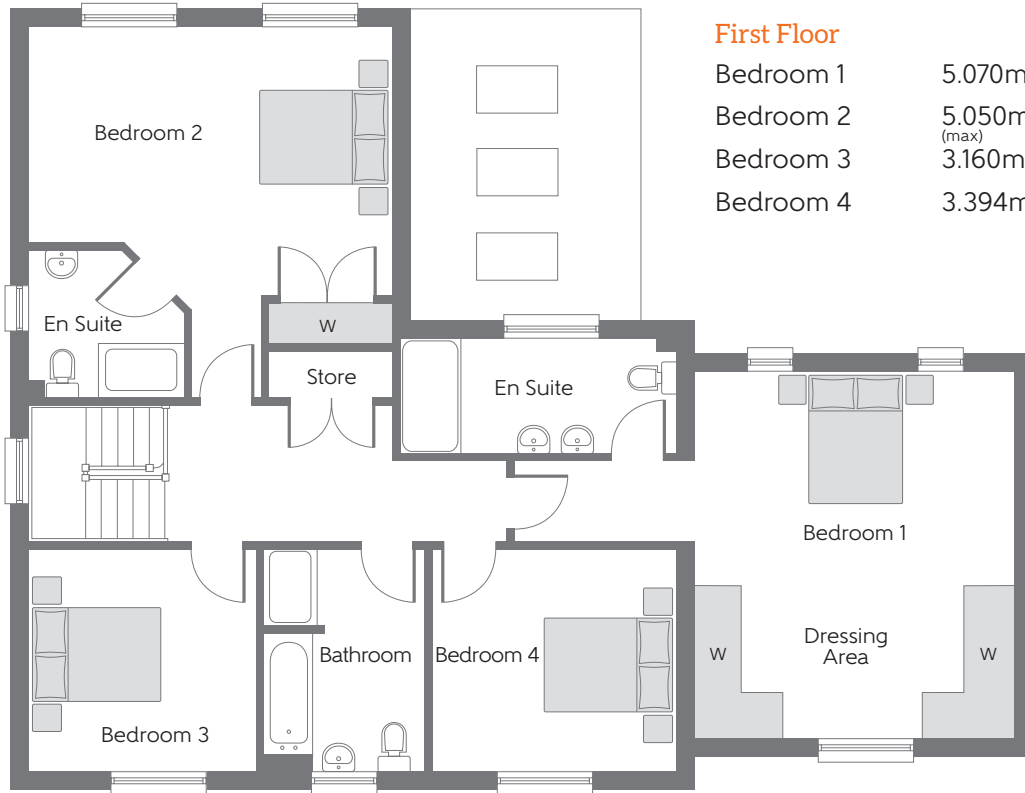
---



Bellway Homes Limited (East Midlands Division)  
3 Romulus Court, Meridian East, Meridian Business Park,  
Braunstone Town, Leicester LE19 1YG

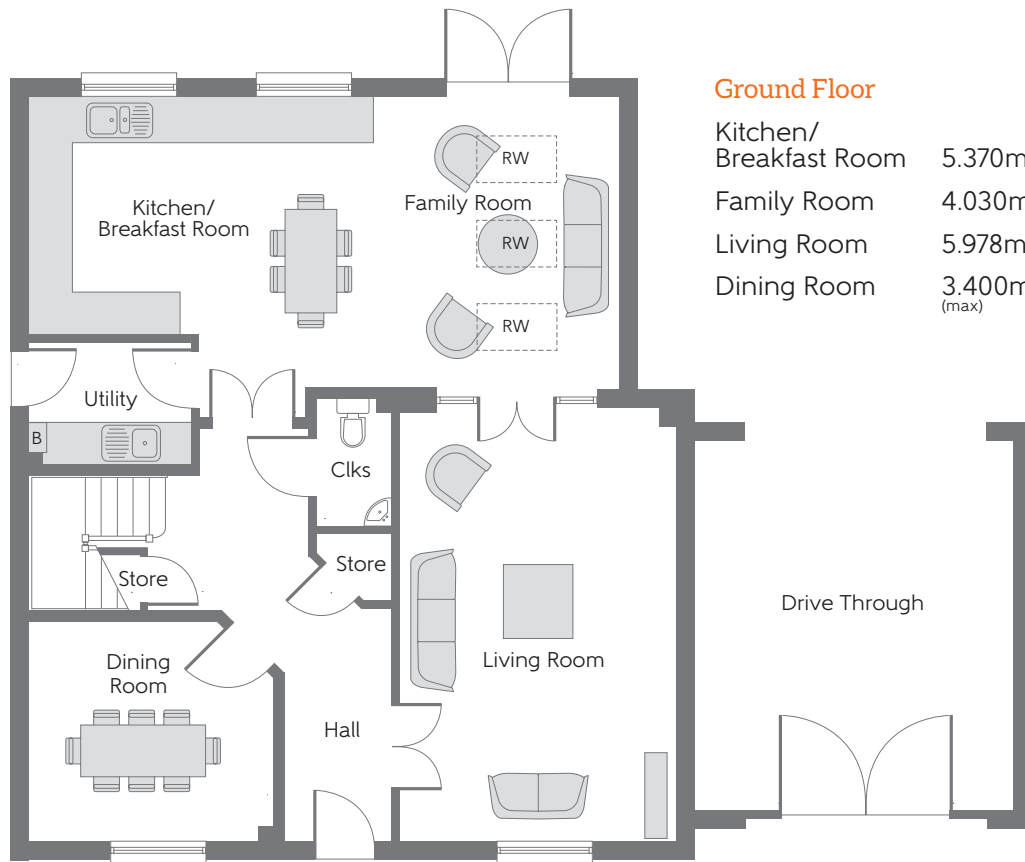
Telephone: 01949 222 691

**Bellway**



**First Floor**

Bedroom 1	5.070m x 4.360m	16'6" x 14'3"
Bedroom 2	5.050m x 3.920m (max) (excl. ward)	16'7" x 12'10" (max) (excl. ward)
Bedroom 3	3.160m x 3.100m	10'3" x 10'1"
Bedroom 4	3.394m x 3.100m	11'2" x 10'1"



**Ground Floor**

Kitchen/ Breakfast Room	5.370m x 3.300m	17'6" x 10'10"
Family Room	4.030m x 2.820m	13'2" x 9'2"
Living Room	5.978m x 3.815m	19'7" x 12'6"
Dining Room	3.400m x 3.050m (max) (max)	11'2" x 10'0" (max) (max)

**B** Boiler    **Clks** Cloakroom    **RW** Roof Window    **W** Fitted Wardrobe

Some items shown in this key may be subject to change, and positions could vary from those indicated on this floorplan. Please refer to Sales Advisor for details of your selected plot. Computer generated image shown overleaf. External finishes, landscaping and configuration may vary from plot to plot. Please refer to Sales Advisor for further details. All dimensions are approximate and should not be used for carpet sizes, appliance spaces, or furniture. Furniture not to scale and all positions are indicative. We operate a policy of continuous improvement and individual features such as kitchen and bathroom layouts, doors, windows, garages and elevational treatments may vary from time to time. Consequently these particulars should be treated as general guidance only and do not constitute a contract, part of a contract or a warranty. 219429/02/21.