

# The Laurel

Four bedroom home

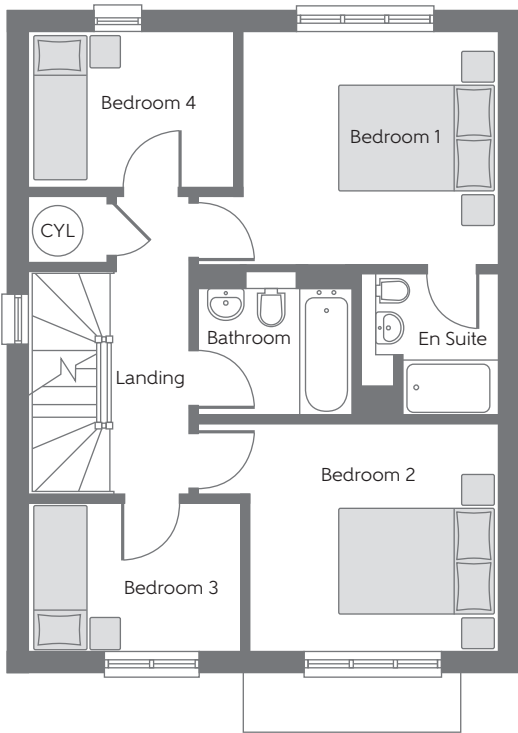
---



Bellway Homes (South Midlands Division)  
Ground Floor, 1120 Elliott Court, Coventry Business Park,  
Herald Avenue, Coventry CV5 6UB

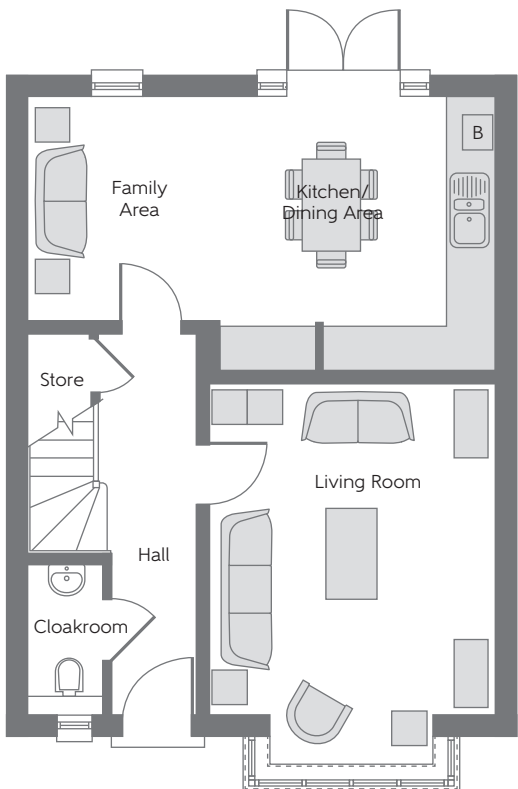
Telephone: 02476 521014  
[www.bellway.co.uk](http://www.bellway.co.uk)

**Bellway**



### First Floor

Bedroom 1	3.325m x 3.005m	10'10" x 9'10"
Bedroom 2	3.225m x 3.005m	10'7" x 9'10"
Bedroom 3	2.775m x 1.990m	9'1" x 6'6"
Bedroom 4	2.675m x 1.990m	8'9" x 6'6"



### Ground Floor

Kitchen/Dining/Family Area	6.090m x 3.599m (max)	19'11" x 11'9" (max)
Living Room	4.366m x 3.760m	14'4" x 12'4"

**B** Boiler      **CYL** Hot Water Cylinder

Some items shown in this key may be subject to change, and positions could vary from those indicated on this floorplan. Please refer to Sales Advisor for details of your selected plot. Computer generated image shown overleaf. External finishes, landscaping and configuration may vary from plot to plot. Please refer to Sales Advisor for further details. All dimensions are approximate and should not be used for carpet sizes, appliance spaces, or furniture. Furniture not to scale and all positions are indicative. Wardrobes are shown to suggest position only, and are not included as standard unless otherwise stated. We operate a policy of continuous improvement and individual features such as kitchen and bathroom layouts, doors, windows, garages and elevational treatments may vary from time to time. Consequently these particulars should be treated as general guidance only and do not constitute a contract, part of a contract or a warranty. HAZELWOOD 09/20