

The Carrick

Four bedroom detached home



Please note Photo Voltaic (solar) panels shown above are indicative only. The location and number of panels are dependent on plot orientation. Please see Sales Advisor for details.

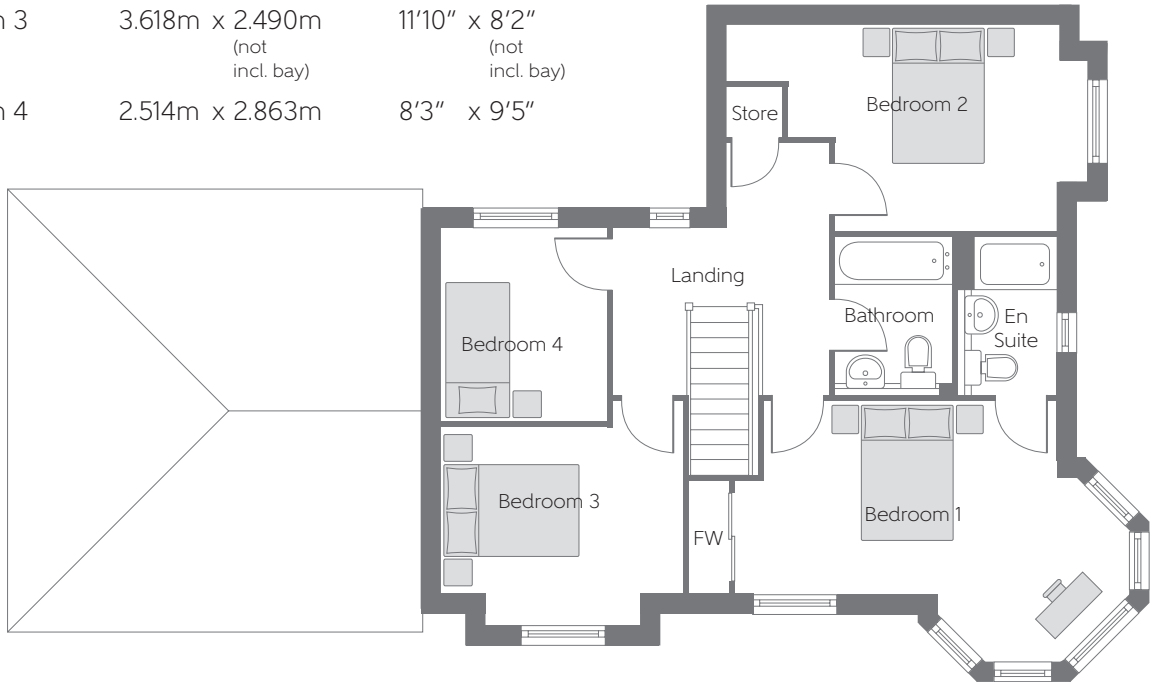
Bellway Homes Limited (Scotland)
Bothwell House, Hamilton Business Park
Caird Street, Hamilton ML3 0QA

Telephone: 01698 477 440
www.bellway.co.uk

Bellway

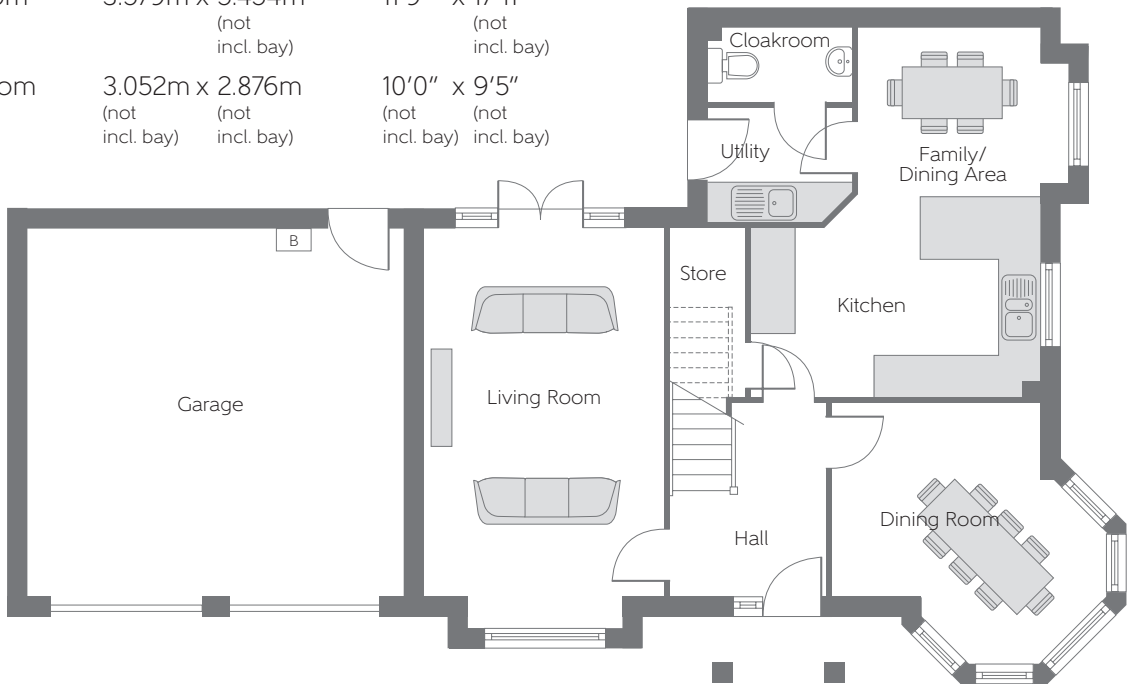
First Floor

Bedroom 1	4.330m x 2.864m (not incl. bay) (not incl. bay)	14'2" x 9'5" (not incl. bay) (not incl. bay)
Bedroom 2	4.879m x 3.051m (not incl. bay) (max)	16'0" x 10'0" (not incl. bay) (max)
Bedroom 3	3.618m x 2.490m (not incl. bay)	11'10" x 8'2" (not incl. bay)
Bedroom 4	2.514m x 2.863m	8'3" x 9'5"



Ground Floor

Kitchen	4.251m x 2.950m (max)	13'11" x 9'8"* (max)
Family/ Dining Area	2.678m x 2.525m (not incl. bay)	8'9" x 8'3" (not incl. bay)
Living Room	3.579m x 5.454m (not incl. bay)	11'9" x 17'11" (not incl. bay)
Dining Room	3.052m x 2.876m (not incl. bay) (not incl. bay)	10'0" x 9'5" (not incl. bay) (not incl. bay)



B Boiler FW Fitted Wardrobes - - - Reduced Head Height

Some items shown in this key may be subject to change, and positions could vary from those indicated on this floorplan. Please refer to Sales Advisor for details of your selected plot. Computer generated image shown. External finishes, landscaping and configuration may vary from plot to plot. Please refer to Sales Advisor for further details. Photo Voltaic (solar) panels are shown for illustrative purposes only and position and size may vary. Please refer to Sales Advisor for exact details. All dimensions are approximate and should not be used for carpet sizes, appliance spaces, or furniture. Furniture not to scale and all positions are indicative. Wardrobes are shown to suggest position only, and are not included as standard unless otherwise stated. We operate a policy of continuous improvement and individual features such as kitchen and bathroom layouts, doors, windows, garages and elevational treatments may vary from time to time. Consequently these particulars should be treated as general guidance only and do not constitute a contract, part of a contract or a warranty. 03/19 2015REG SILVERWOOD