

The Turnberry

Five bedroom detached home with integral garage

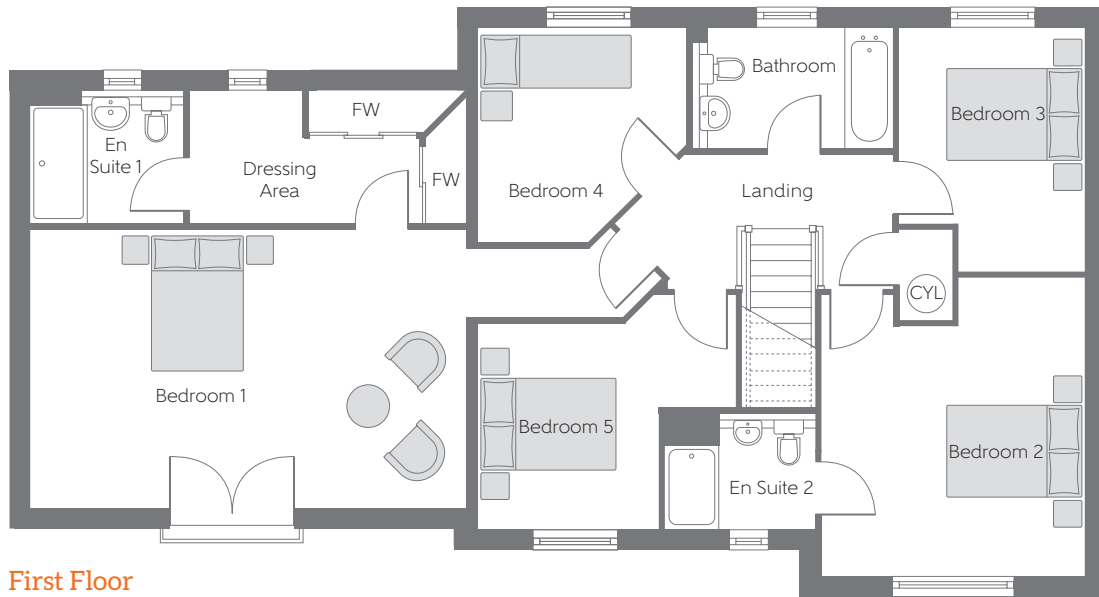


Please note Photo Voltaic (solar) panels shown above are indicative only. The location and number of panels are dependent on plot orientation. Please see Sales Advisor for details.

Bellway Homes Limited (Scotland East)
6 Almondvale Business Park
Almondvale Way, Livingston, West Lothian EH54 6GA

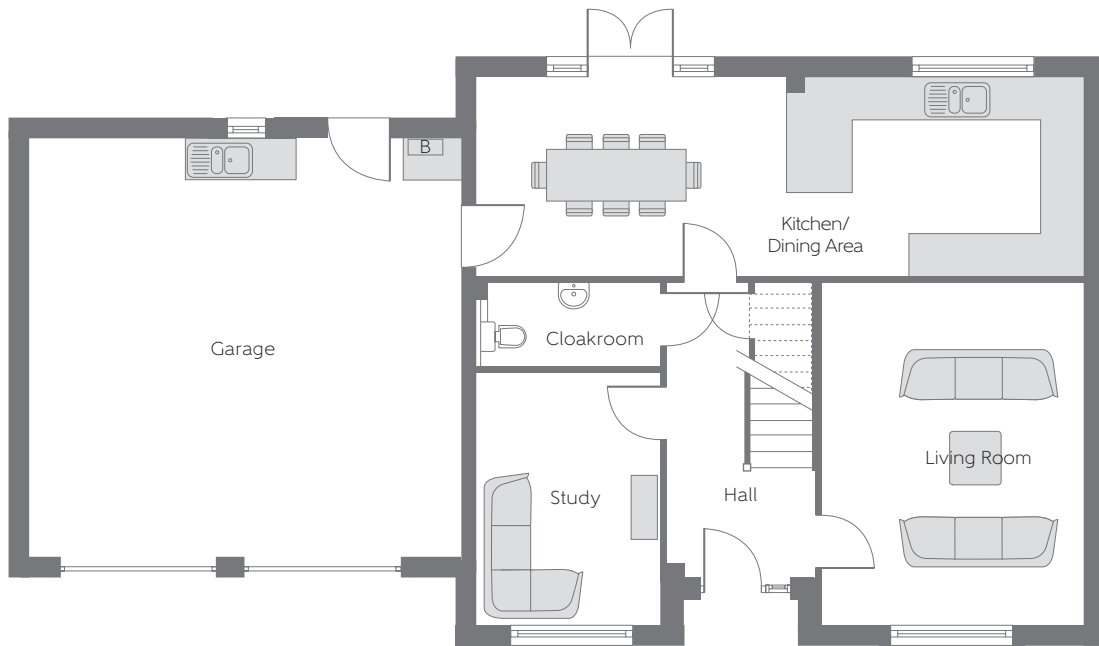
Telephone: 01506 594 420
www.bellway.co.uk

Bellway



First Floor

Bedroom 1	6.223m x 3.998m	20'5" x 13'1"
Bedroom 2	3.770m x 4.268m	12'4" x 14'0"
Bedroom 3	2.663m x 3.499m	8'9" x 11'6"
Bedroom 4	3.031m x 3.077m	9'11" x 10'1"
Bedroom 5	2.643m x 2.942m	8'8" x 9'8"



Ground Floor

Kitchen/ Dining Area	8.779m x 2.849m	28'10" x 9'4"
Living Room	3.770m x 4.904m	12'4" x 16'1"
Study	2.704m x 3.632m	8'10" x 11'11"

B Boiler
 FW Fitted Wardrobe
 CYL Hot Water Cylinder
 Reduced Head Height

Some items shown in this key may be subject to change, and positions could vary from those indicated on this floorplan. Please refer to Sales Advisor for details of your selected plot. Computer generated image shown. External finishes, landscaping and configuration may vary from plot to plot. Please refer to Sales Advisor for further details. Photo Voltaic (solar) panels are shown for illustrative purposes only and position and size may vary. Please refer to Sales Advisor for exact details. All dimensions are approximate and should not be used for carpet sizes, appliance spaces, or furniture. Furniture not to scale and all positions are indicative. Wardrobes are shown to suggest position only, and are not included as standard unless otherwise stated. We operate a policy of continuous improvement and individual features such as kitchen and bathroom layouts, doors, windows, garages and elevational treatments may vary from time to time. Consequently these particulars should be treated as general guidance only and do not constitute a contract, part of a contract or a warranty. 08/19 2015REG LAURELPARK