

The Wendover

Three bedroom home

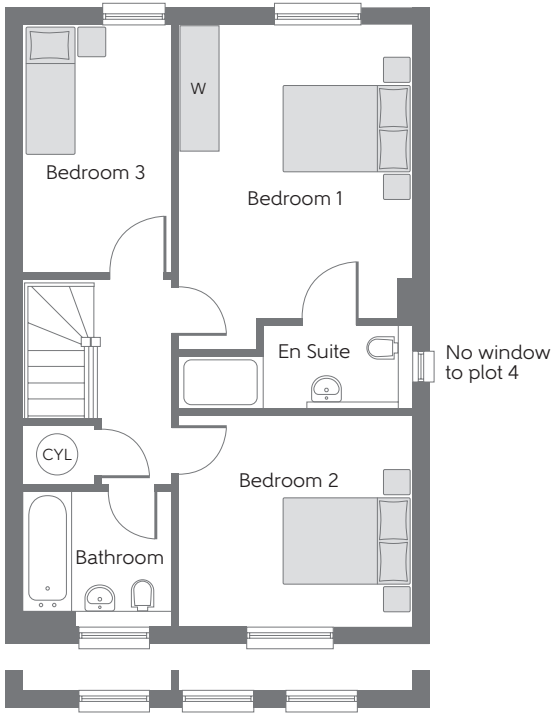
Plots 4, 9, 48, 49, 75, 78, 89, 90, 103, 104, 112, 113,
114, 115, 121, 122, 126, 127, 128, 129, 151, 157, 160 & 161



Bellway Homes Limited (Northern Home Counties Division)
Building 5, Caldecotte Lake Drive, Caldecotte,
Milton Keynes MK7 8LE

Telephone: 01908 364200
Fax: 01908 364201
www.bellway.co.uk

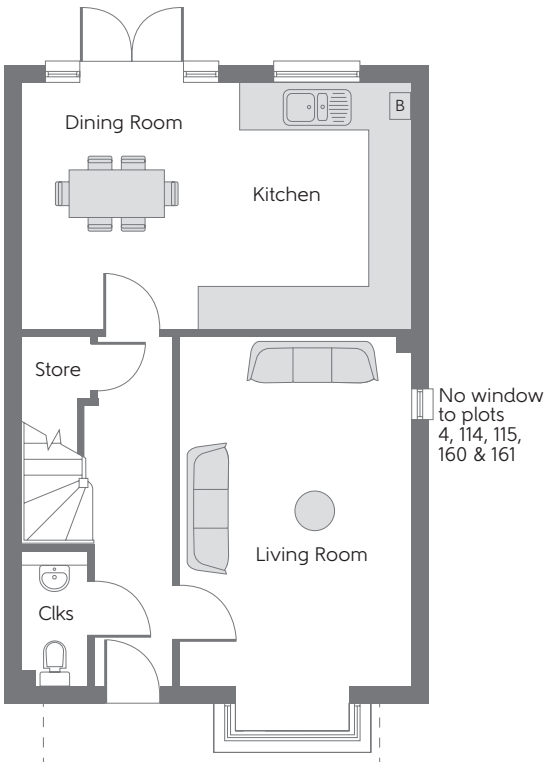
Bellway



Variation to plots 9, 75, 78, 151 & 157

First Floor

Bedroom 1	4.645m x 3.353m <small>(max) (max)</small>	15'3" x 11'0" <small>(max) (max)</small>
Bedroom 2	3.375m x 3.025m	11'1" x 9'11"
Bedroom 3	3.528m x 2.110m	11'7" x 6'11"



Ground Floor

Kitchen	3.495m x 3.050m	11'6" x 10'0"
Dining room	3.495m x 2.530m	11'6" x 8'4"
Living Room	5.650m x 3.295m	18'6" x 10'10"

B Boiler **Clks** Cloakroom **W** Fitted Wardrobe **CYL** Hot Water Cylinder

Some items shown in this key may be subject to change, and positions could vary from those indicated on this floorplan. Please refer to Sales Advisor for details of your selected plot. Computer generated image shown overleaf. External finishes, landscaping and configuration may vary from plot to plot. Please refer to Sales Advisor for further details. All dimensions are approximate and should not be used for carpet sizes, appliance spaces or furniture. Furniture not to scale and all positions are indicative. We operate a policy of continuous improvement and individual features such as kitchen and bathroom layouts, doors, windows, garages and elevational treatments may vary from time to time. Consequently these particulars should be treated as general guidance only and do not constitute a contract, part of a contract or a warranty. 194904/07/19.