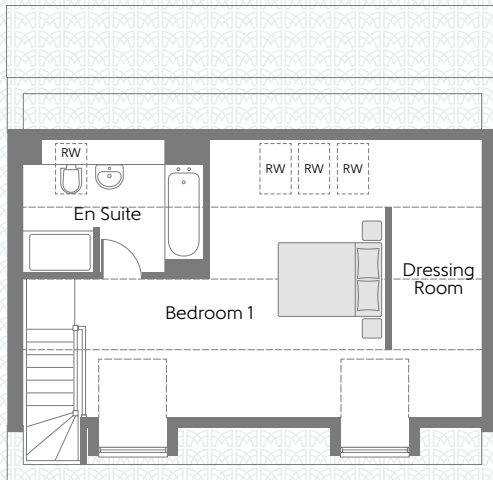




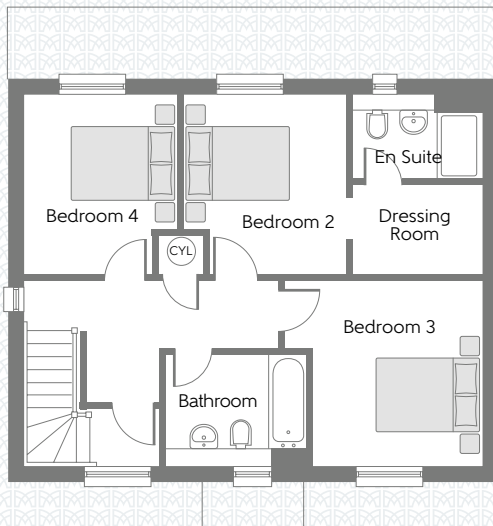
# THE WHITEBEAM

## Four bedroom home



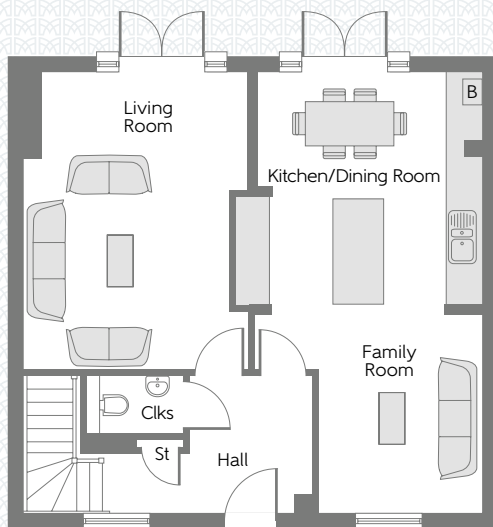
### Second Floor

Bedroom 1 5.375m x 4.950m 17'8" x 16'3"  
(max) (max) (max) (max)



### First Floor

Bedroom 2 3.180m x 2.924m 10'5" x 9'7"  
(max) (max) (max) (max)  
Bedroom 3 3.526m x 3.272m 11'7" x 10'9"  
(max) (max) (max) (max)  
Bedroom 4 3.180m x 2.725m 10'5" x 8'11"  
(max) (max) (max) (max)



### Ground Floor

Kitchen/  
Dining Room 4.108m x 3.925m 13'6" x 12'11"  
(max) (max) (max) (max)  
Family Room 3.417m x 2.860m 11'3" x 9'5"  
Living Room 5.262m x 3.925m 17'3" x 12'11"  
(max) (max) (max) (max)

**B** Boiler **CYL** Hot Water Cylinder **Clks** Cloakroom **St** Store **---** Reduced Head Height

Some items shown in this key may be subject to change, and positions could vary from those indicated on this floorplan. Please refer to Sales Advisor for details of your selected plot. Computer generated image shown overleaf. External finishes, landscaping and configuration may vary from plot to plot. Please refer to Sales Advisor for further details. All dimensions are approximate and should not be used for carpet sizes, appliance spaces, or furniture. Furniture not to scale and all positions are indicative. We operate a policy of continuous improvement and individual features such as kitchen and bathroom layouts, doors, windows, garages and elevational treatments may vary from time to time. Consequently these particulars should be treated as general guidance only and do not constitute a contract, part of a contract or a warranty. 182148/07/18. The Bay -A/1666/v6/00/03.