

The Willow

Three bedroom home

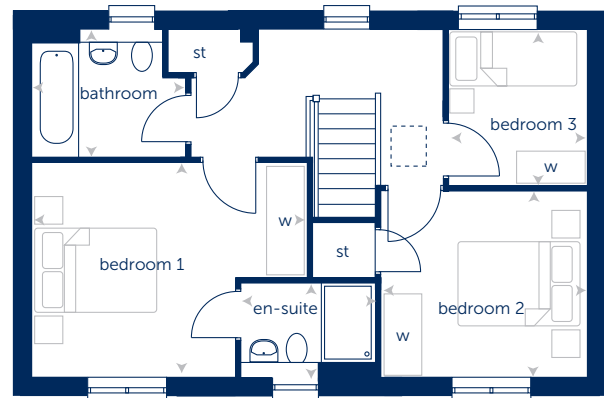
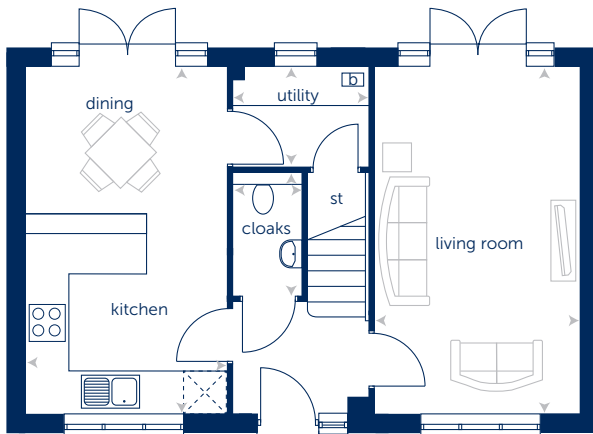


Bellway



The Willow

Three bedroom home



Ground Floor

Living Room	5.190m x 3.055m	17'0" x 10'0"
Kitchen/Dining	5.190m x 3.000m	17'0" x 9'10"
Utility	1.985m x 1.650m	6'6" x 5'4"
Cloaks	1.600m x 0.980m	5'3" x 3'2"

First Floor

Bedroom 1	4.130m x 3.165m	13'6" x 10'4"
En-suite	2.100m x 1.385m	6'10" x 4'6"
Bedroom 2	3.055m x 2.765m	10'0" x 9'0"
Bedroom 3	2.300m x 2.050m	7'6" x 6'8"
Bathroom	2.275m x 1.900m	7'5" x 6'2"

* maximum dimensions

b boiler
st cupboard
w wardrobe space

Items shown in this key may be subject to change, and positions could vary from those indicated on this floorplan. Please refer to Sales Advisor for details of your selected plot.

Computer generated image shown overleaf. External finishes, landscaping and configuration may vary from plot to plot. Please refer to Sales Advisor for further details. All dimensions are approximate and should not be used for carpet sizes, appliance spaces, or furniture. Furniture not to scale and all positions are indicative. Wardrobes are shown to suggest position only, and are not included as standard unless otherwise stated. We operate a policy of continuous improvement and individual features such as kitchen and bathroom layouts, doors, windows, garages and elevational treatments may vary from time to time. Consequently these particulars should be treated as general guidance only and cannot be relied upon as accurately describing any of the Specified Matters prescribed by any order made under the Property Misdescriptions Act 1991. Nor do they constitute a contract, part of a contract or a warranty.

Bellway Homes Ltd,
(Yorkshire Division),
First Floor,
Unit 2150,
Century Way,
Leeds,
West Yorkshire LS15 8ZB
Telephone 0113 3900 800
www.bellway.co.uk