

The Wickham

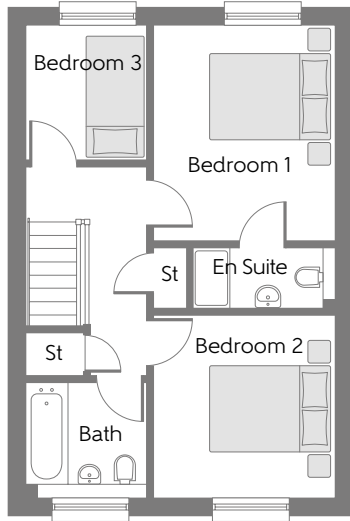
Three bedroom home



Bellway Homes Ltd, (Yorkshire Division)
First Floor Unit 2150, Century Way,
Leeds LS15 8ZB

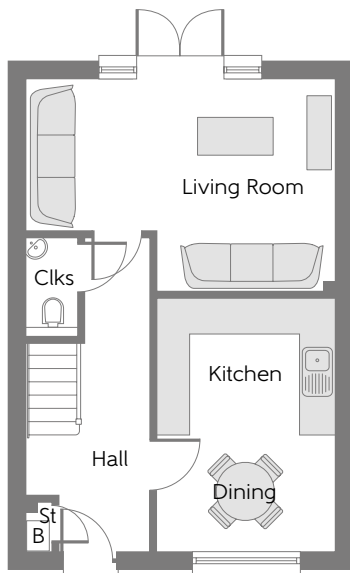
Telephone: 0113 3900 800
www.bellway.co.uk

Bellway



First Floor

Bedroom 1	3.680m x 3.030m	12'0" x 9'11"
En Suite	2.355m x 0.965m	7'8" x 3'1"
Bedroom 2	3.030m x 2.995m	9'11" x 9'9"
Bedroom 3	2.250m x 2.000m	7'4" x 6'6"
Bathroom	2.000m x 1.905m	6'6" x 6'2"



Ground Floor

Living Room	5.155m x 3.555m	16'10" x 11'7"
Kitchen/Dining	4.185m x 3.000m	14'8" x 9'10"
Cloakroom	1.650m x 0.850m	5'4" x 2'9"

B Boiler **Clks** Cloakroom **St** Store

Some items shown in this key may be subject to change, and positions could vary from those indicated on this floorplan. Please refer to Sales Advisor for details of your selected plot. Computer generated image shown overleaf. External finishes, landscaping and configuration may vary from plot to plot. Please refer to Sales Advisor for further details. All dimensions are approximate and should not be used for carpet sizes, appliance spaces, or furniture. Furniture not to scale and all positions are indicative. We operate a policy of continuous improvement and individual features such as kitchen and bathroom layouts, doors, windows, garages and elevational treatments may vary from time to time. Consequently these particulars should be treated as general guidance only and do not constitute a contract, part of a contract or a warranty. 183887/05/19. Wickham/Rev GF_C, FF_A, T1_A, T2_A.