

The Willow

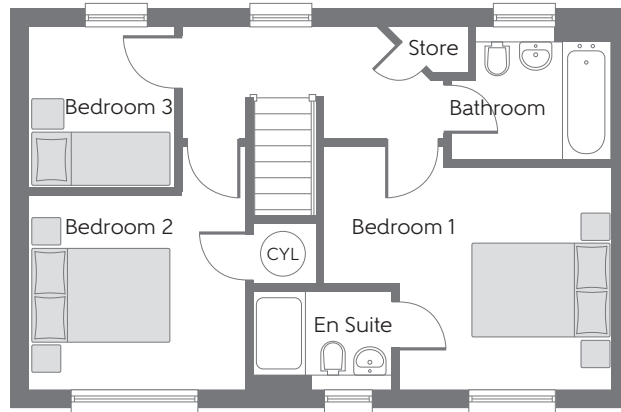
Three bedroom home



Bellway Homes Limited (Wessex Division)
Bellway House, Embankment Way,
Castleman Business Centre,
Ringwood, Hampshire BH24 1EU

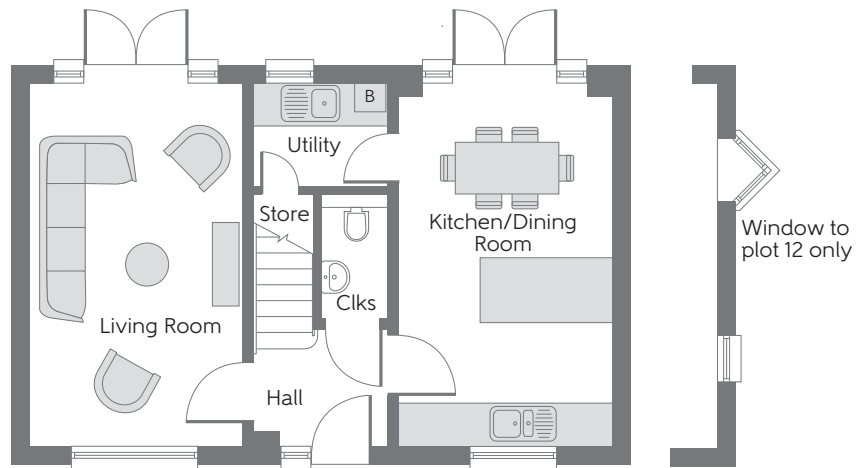
Telephone: 01425 477 666
www.bellway.co.uk

Bellway



First Floor

Bedroom 1	4.130m x 3.492m (max) (max)	13'7" x 11'5" (max) (max)
Bedroom 2	3.115m x 2.775m (max) (min)	10'3" x 9'1" (max) (min)
Bedroom 3	2.325m x 2.104m	7'8" x 6'11"



Ground Floor

Kitchen/ Dining Room	5.190m x 3.055m	17'0" x 10'0"
Living Room	5.190m x 3.055m	17'0" x 10'0"

B Boiler Clks Cloakroom **CYL** Hot Water Cylinder

Some items shown in this key may be subject to change, and positions could vary from those indicated on this floorplan. Please refer to Sales Advisor for details of your selected plot. Computer generated image shown overleaf. External finishes, landscaping and configuration may vary from plot to plot. Please refer to Sales Advisor for further details. All dimensions are approximate and should not be used for carpet sizes, appliance spaces or furniture. Furniture not to scale and all positions are indicative. We operate a policy of continuous improvement and individual features such as kitchen and bathroom layouts, doors, windows, garages and elevational treatments may vary from time to time. Consequently these particulars should be treated as general guidance only and do not constitute a contract, part of a contract or a warranty. 195445/05/19.