

The Birch

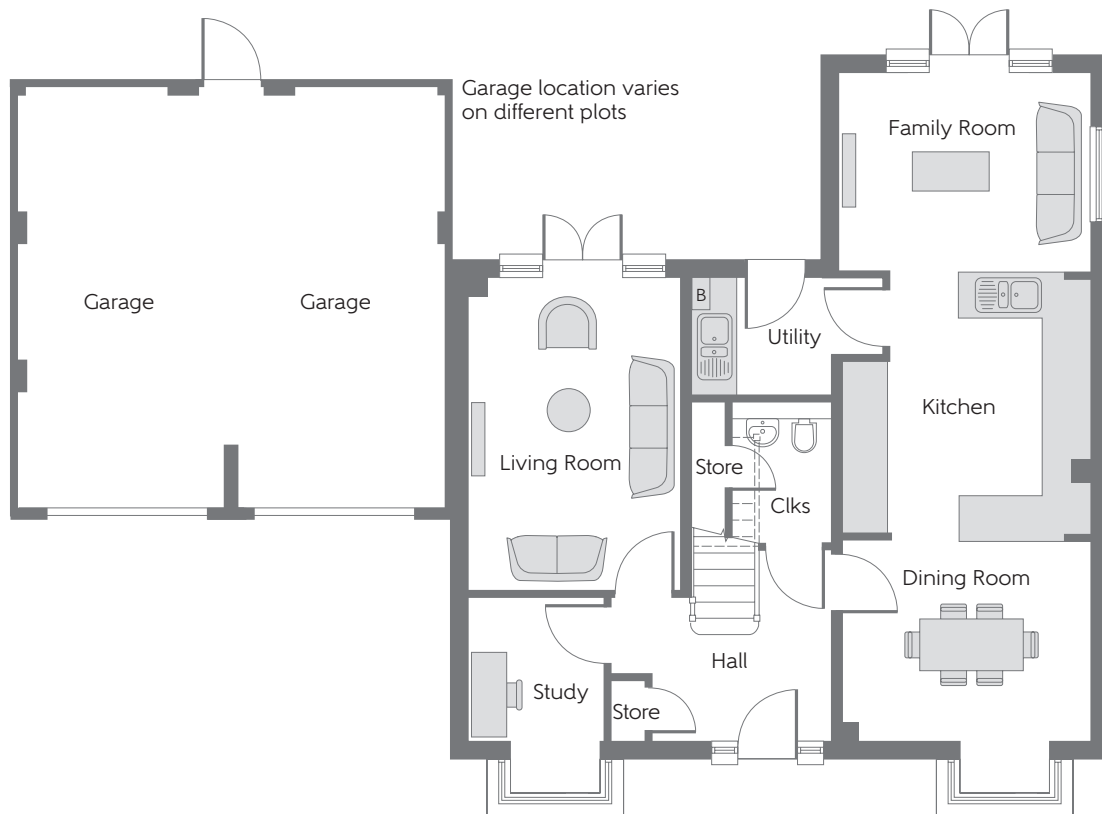
Five bedroom home



Bellway Homes Limited (Kent Division)
30 Tower View, Kings Hill,
West Malling, Kent ME19 4UY

Telephone: 01732 879750
www.bellway.co.uk

Bellway

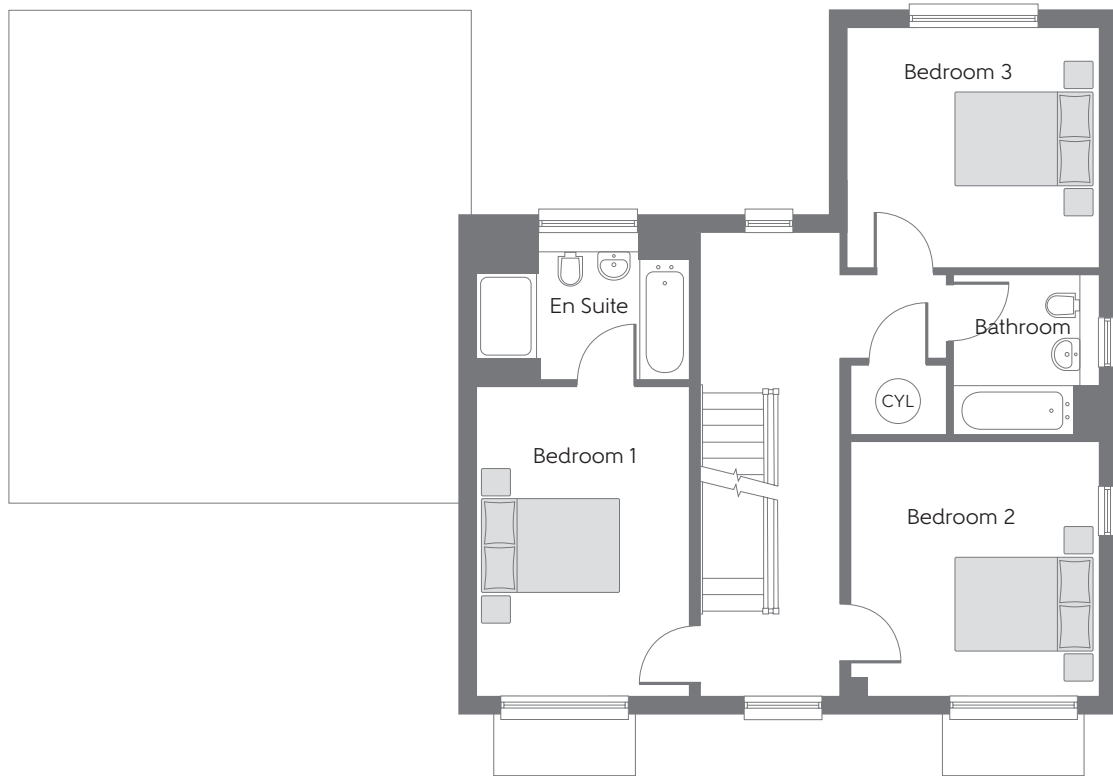


Ground Floor

Kitchen	3.647m x 3.509m	12'0" x 11'6"
Family Room	3.509m x 2.814m	11'6" x 9'3"
Dining Room	3.509m x 2.824m	11'6" x 9'3"
Living Room	4.429m x 2.988m	14'6" x 9'1"
Study	2.025m x 1.895m	6'8" x 6'3"


B Boiler Clks Cloakroom --- Reduced Head Height

Some items shown in this key may be subject to change, and positions could vary from those indicated on this floorplan. Please refer to Sales Advisor for details of your selected plot. Computer generated image shown overleaf. External finishes, landscaping and configuration may vary from plot to plot. Please refer to Sales Advisor for further details. All dimensions are approximate and should not be used for carpet sizes, appliance spaces or furniture. Furniture not to scale and all positions are indicative. We operate a policy of continuous improvement and individual features such as kitchen and bathroom layouts, doors, windows, garages and elevational treatments may vary from time to time. Consequently these particulars should be treated as general guidance only and do not constitute a contract, part of a contract or a warranty. The Yalding/The Birch. 188770/05/19.

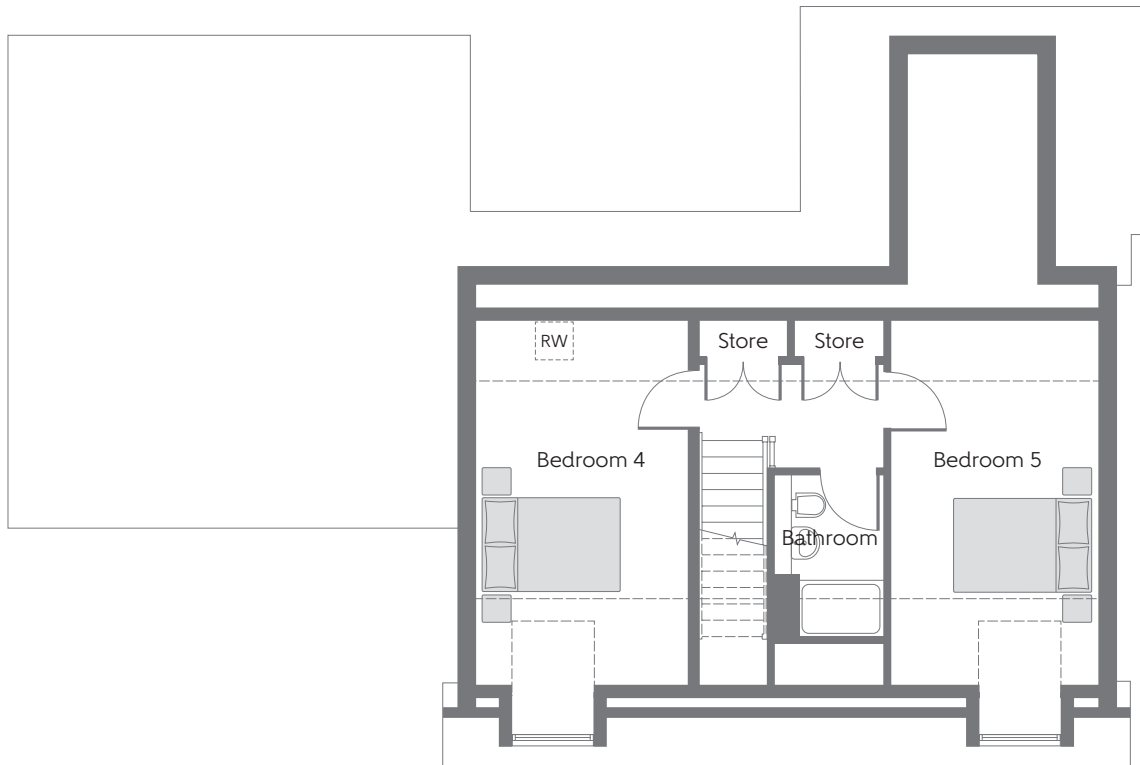


First Floor

Bedroom 1	4.385m x 2.987m	14'5" x 9'10"
Bedroom 2	3.592m x 3.509m	11'10" x 11'6"
Bedroom 3	3.509m x 3.390m	11'6" x 11'2"

 Hot Water Cylinder

Some items shown in this key may be subject to change, and positions could vary from those indicated on this floorplan. Please refer to Sales Advisor for details of your selected plot. Computer generated image shown overleaf. External finishes, landscaping and configuration may vary from plot to plot. Please refer to Sales Advisor for further details. All dimensions are approximate and should not be used for carpet sizes, appliance spaces or furniture. Furniture not to scale and all positions are indicative. We operate a policy of continuous improvement and individual features such as kitchen and bathroom layouts, doors, windows, garages and elevational treatments may vary from time to time. Consequently these particulars should be treated as general guidance only and do not constitute a contract, part of a contract or a warranty. The Yalding/The Birch. 188770/05/19.



Second Floor

Bedroom 4	4.919m x 2.987m	16'2" x 9'10"
Bedroom 5	4.919m x 2.926m	16'2" x 9'7"

 Roof Window

Some items shown in this key may be subject to change, and positions could vary from those indicated on this floorplan. Please refer to Sales Advisor for details of your selected plot. Computer generated image shown overleaf. External finishes, landscaping and configuration may vary from plot to plot. Please refer to Sales Advisor for further details. All dimensions are approximate and should not be used for carpet sizes, appliance spaces or furniture. Furniture not to scale and all positions are indicative. We operate a policy of continuous improvement and individual features such as kitchen and bathroom layouts, doors, windows, garages and elevational treatments may vary from time to time. Consequently these particulars should be treated as general guidance only and do not constitute a contract, part of a contract or a warranty. The Yalding/The Birch. 188770/05/19.