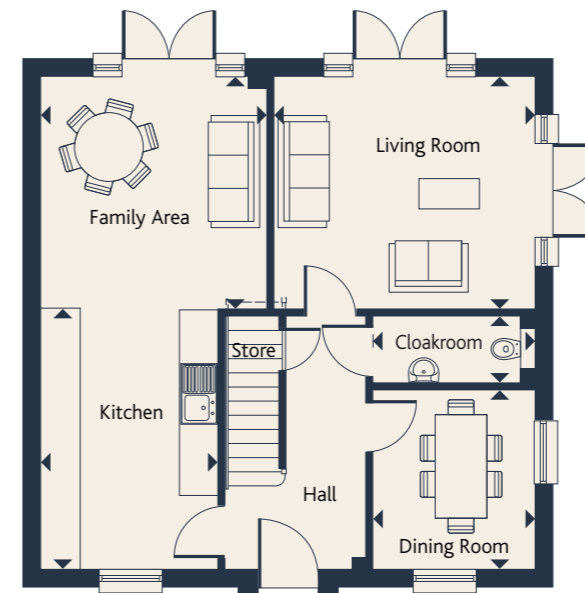


THE
Gatehouse
A 4 BEDROOM HOME



Bright and spacious best describe this attractive home, where you can throw open three sets of patio doors to the garden, truly bringing the outside, in.

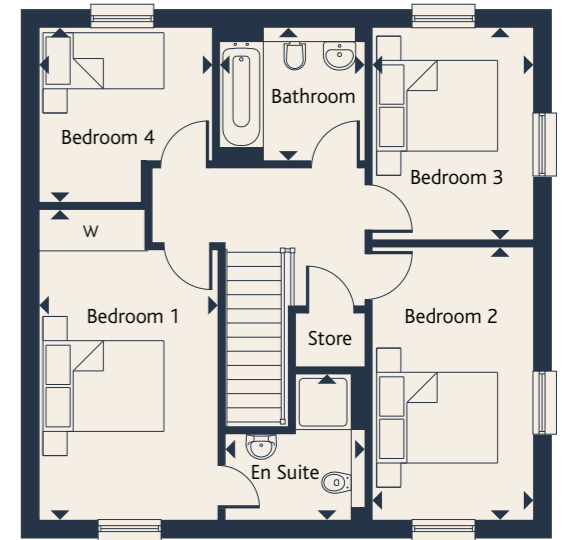
Ground floor



Ground floor

Living Room	4.150m x 3.700m	13'7" x 12'1"
Kitchen	4.140m x 2.800m	13'7" x 9'2"
Family Area	3.700m x 3.590m	12'2" x 11'9"
Dining Room	2.865m x 2.555m	9'4" x 8'4"
Cloakroom	2.555m x 1.050m	8'4" x 3'5"

First floor



First floor

Bedroom 1	4.995m x 2.840m	16'4" x 9'3"
En Suite	2.320m x 2.220m	7'7" x 7'3"
Bedroom 2	4.380m x 2.580m	14'4" x 8'5"
Bedroom 3	3.385m x 2.580m	11'1" x 8'5"
Bedroom 4	2.775m x 2.770m	9'1" x 9'1"
Bathroom	2.285m x 2.120m	7'5" x 6'11"

W Fitted Wardrobe --- Reduced Head Height ▼ Illustrates where dimensions are taken from

Some items shown in this key may be subject to change, and positions could vary from those indicated on this floorplan. Please refer to Sales Advisor for details of your selected plot. Computer generated image shown on previous page. External finishes, landscaping and configuration may vary from plot to plot. Please refer to Sales Advisor for further details. All dimensions are approximate and should not be used for carpet sizes, appliance spaces, or furniture. Furniture not to scale and all positions are indicative. Wardrobes are shown to suggest position only, and are not included as standard unless otherwise stated. We operate a policy of continuous improvement and individual features such as kitchen and bathroom layouts, doors, windows, garages and elevational treatments may vary from time to time. Consequently these particulars should be treated as general guidance only and do not constitute a contract, part of a contract or a warranty.