

The Alexandra

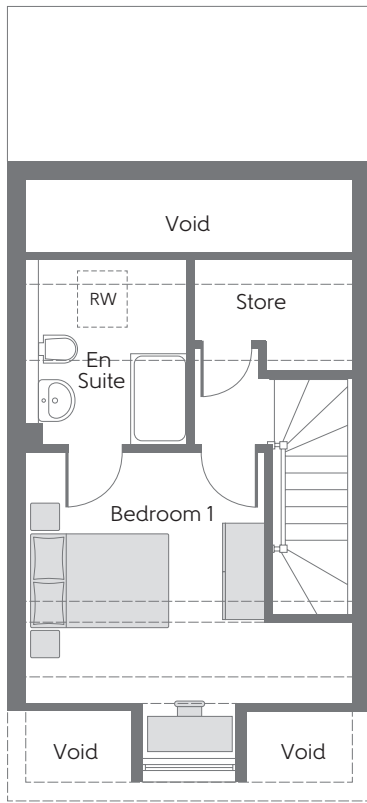
Three bedroom home



Bellway Homes Limited (Thames Valley Division)
Pacific House, Imperial Way, Reading
Berkshire RG2 0TD

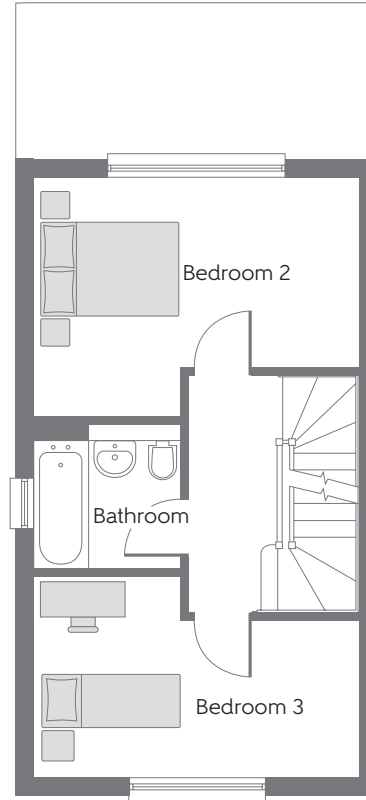
Telephone: 0118 933 8020
Fax: 0118 931 3929
www.bellway.co.uk

Bellway



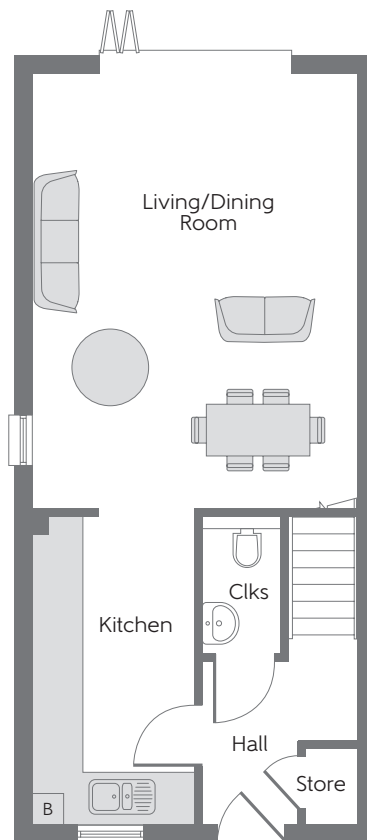
Second Floor

Bedroom 1 4.275m x 4.265m 14'0" x 14'0"
(max) (max) (max) (max)



First Floor

Bedroom 2 4.265m x 3.140m 14'0" x 10'4"
(max) (max) (max) (max)
 Bedroom 3 4.265m x 2.650m 14'0" x 8'8"
(max) (max) (max) (max)



Ground Floor

Kitchen 4.030m x 2.135m 13'3" x 7'0"
 Living/
 Dining Room 5.740m x 4.265m 18'10" x 14'0"

B Boiler Clks Cloakroom **RW** Roof Window --- Reduced Head Height

Some items shown in this key may be subject to change, and positions could vary from those indicated on this floorplan. Please refer to Sales Advisor for details of your selected plot. Computer generated image shown overleaf. External finishes, landscaping and configuration may vary from plot to plot. Please refer to Sales Advisor for further details. All dimensions are approximate and should not be used for carpet sizes, appliance spaces or furniture. Furniture not to scale and all positions are indicative. We operate a policy of continuous improvement and individual features such as kitchen and bathroom layouts, doors, windows, garages and elevational treatments may vary from time to time. Consequently these particulars should be treated as general guidance only and do not constitute a contract, part of a contract or a warranty. 183279/03/19. 3BH2 Plus.