

Elizabeth House

1 and 2 bedroom homes

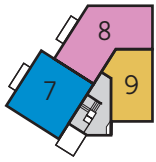
Apartments E1 - E3



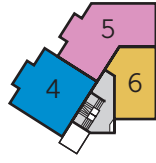
Bellway Homes Limited (Thames Valley Division)
Pacific House, Imperial Way, Reading
Berkshire RG2 0TD

Telephone: 0118 933 8020
Fax: 0118 931 3929
www.bellway.co.uk

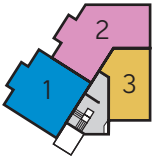
Bellway



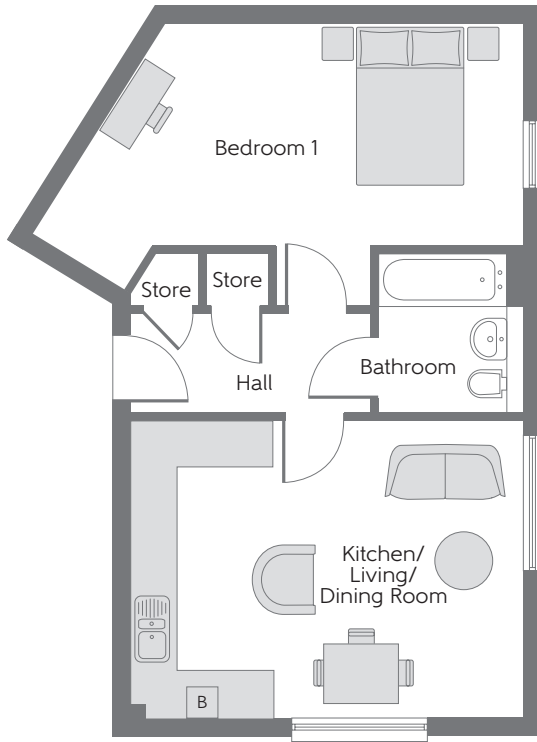
Second Floor



First Floor

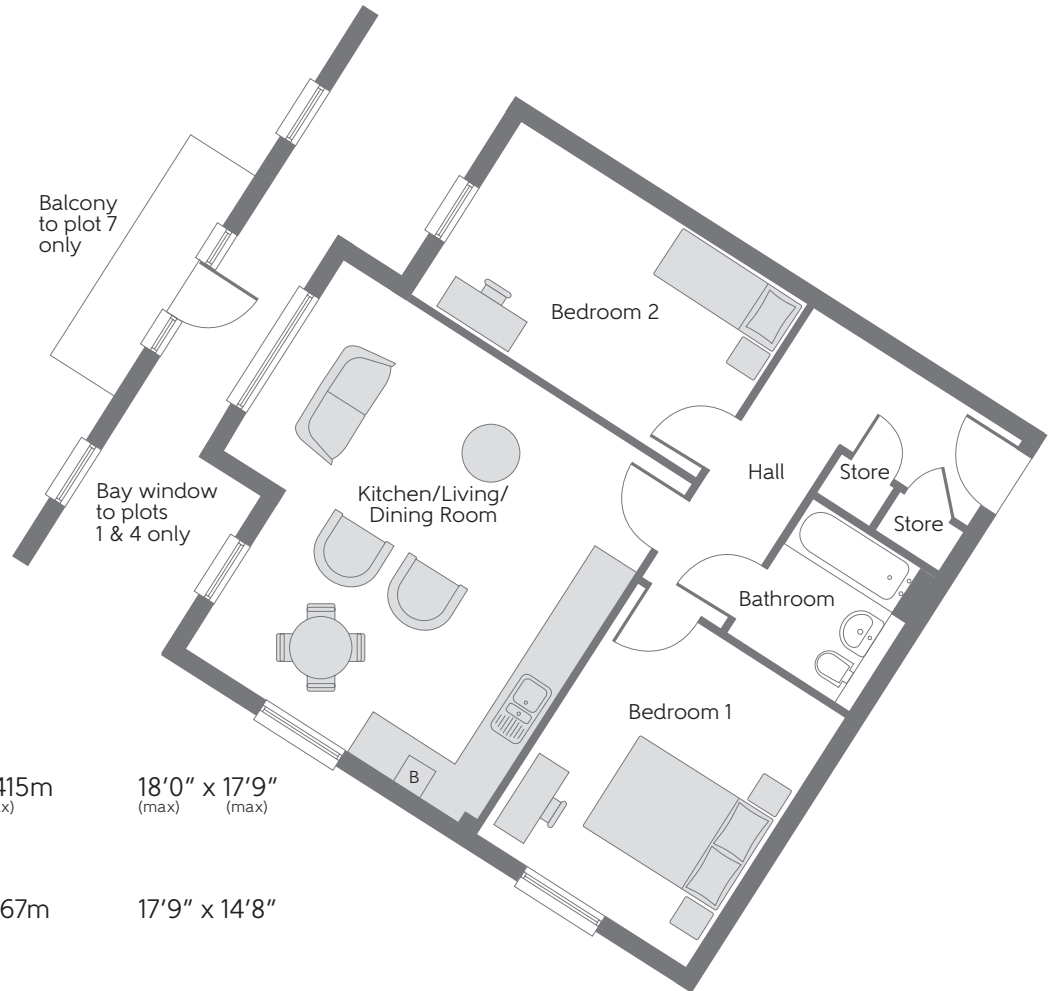


Ground Floor



The E1
Apartments 3, 6 & 9

Kitchen/Living Dining Room	5.163m x 3.900m	16'11" x 12'10"
Bedroom 1	6.385m x 2.930m (max) (max)	20'11" x 9'7" (max) (max)



The E3
Apartments 1 & 4

Kitchen/Living Dining Room	5.480m x 5.415m (max) (max)	18'0" x 17'9" (max) (max)
-------------------------------	--------------------------------	------------------------------

Apartment 7

Kitchen/Living Dining Room	5.415m x 4.467m	17'9" x 14'8"
-------------------------------	-----------------	---------------

Apartment 1, 4 & 7

Bedroom 1	3.900m x 3.250m	12'10" x 10'8"
Bedroom 2	4.465m x 2.712m	14'8" x 8'11"

B Boiler

Some items shown in this key may be subject to change, and positions could vary from those indicated on this floorplan. Please refer to Sales Advisor for details of your selected plot. Computer generated image shown overleaf. External finishes and landscaping may vary from plot to plot. Please refer to Sales Advisor for further details. All dimensions are approximate and should not be used for carpet sizes, appliance spaces, or furniture. Furniture not to scale and all positions are indicative. We operate a policy of continuous improvement and individual features such as kitchen and bathroom layouts, doors, windows, garages and elevational treatments may vary from time to time. Consequently these particulars should be treated as general guidance only and do not constitute a contract, part of a contract or a warranty.