

The Stevenson

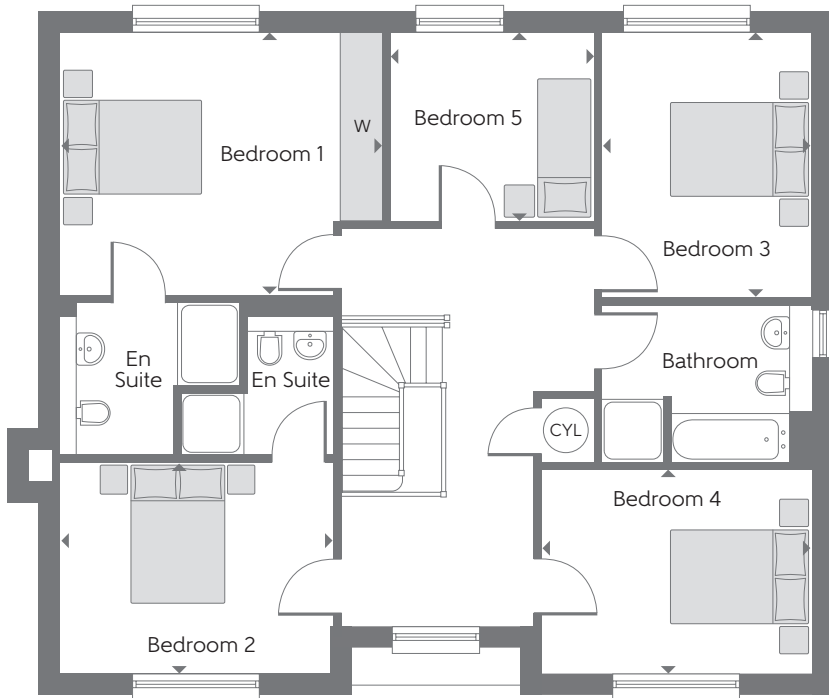
Five bedroom home



Bellway Homes Limited (Thames Valley Division)
Pacific House, Imperial Way, Reading
Berkshire RG2 0TD

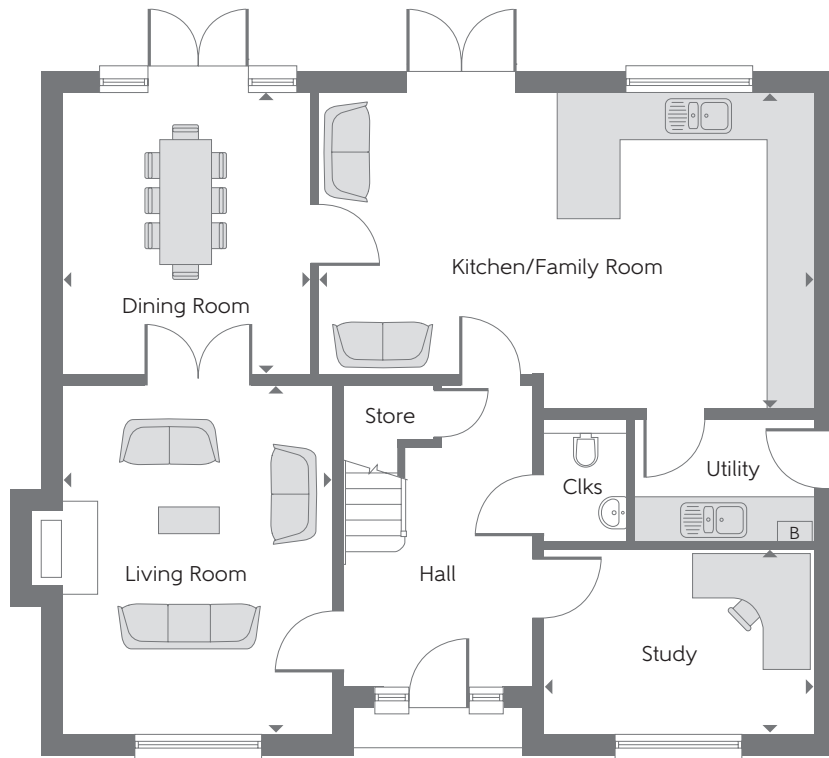
Telephone: 0118 933 8020
Fax: 0118 931 3929
www.bellway.co.uk

Bellway



First Floor

Bedroom 1	4.575m x 3.750m	15'0" x 12'3"
Bedroom 2	3.898m x 3.010m	12'9" x 9'10"
Bedroom 3	3.785m x 2.988m	12'5" x 9'9"
Bedroom 4	3.825m x 2.900m	12'7" x 9'6"
Bedroom 5	2.925m x 2.675m	9'7" x 8'9"



Ground Floor

Kitchen/ Family Room	7.075m x 4.500m	23'1" x 14'8"
Dining Room	4.000m x 3.525m	13'1" x 11'7"
Living Room	4.975m x 3.825m	16'3" x 12'7"
Study	3.825m x 2.625m	12'7" x 8'7"

B Boiler Clks Cloakroom CYL Hot Water Cylinder W Fitted Wardrobe

Some items shown in this key may be subject to change, and positions could vary from those indicated on this floorplan. Please refer to Sales Advisor for details of your selected plot. Computer generated image shown overleaf. External finishes, landscaping and configuration may vary from plot to plot. Please refer to Sales Advisor for further details. All dimensions are approximate and should not be used for carpet sizes, appliance spaces or furniture. Furniture not to scale and all positions are indicative. We operate a policy of continuous improvement and individual features such as kitchen and bathroom layouts, doors, windows, garages and elevational treatments may vary from time to time. Consequently these particulars should be treated as general guidance only and do not constitute a contract, part of a contract or a warranty. Type H531. 190736/02/19.