

The Gordon Alt with Bay

Three bedroom home

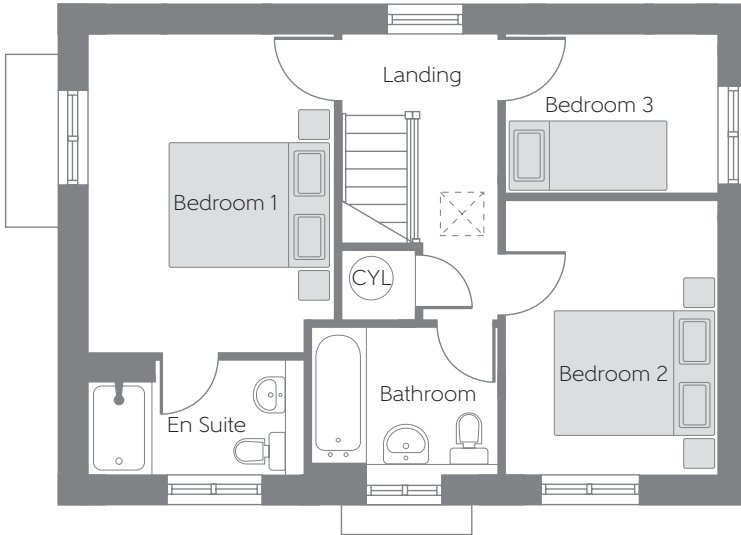


Bellway Homes Limited (North West),
2 Alderman Road,
Liverpool L24 9LR

Telephone: 0151 486 2900
www.bellway.co.uk

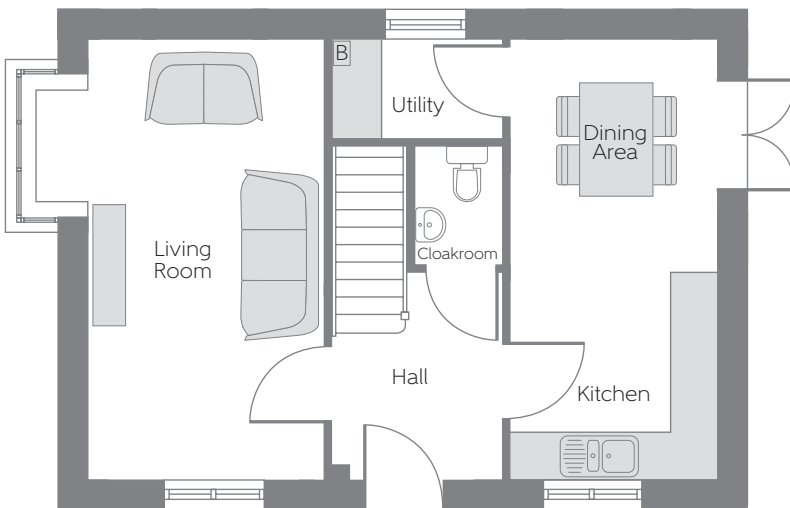
Bellway

The Gordon Alt with Bay at Willow Grange



First Floor

Bedroom 1	4.027m x 3.057m (max) (max)	13'3" x 10'0" (max) (max)
En Suite	2.701m x 1.476m (max) (max)	8'10" x 4'10" (max) (max)
Bedroom 2	3.476m x 2.782m	11'5" x 9'2"
Bedroom 3	2.782m x 2.028m	9'2" x 6'8"
Bathroom	2.331m x 1.900m (max) (max)	7'8" x 6'3" (max) (max)



Ground Floor

Living Room (exc bay)	5.596m x 3.000m	18'4" x 9'10"
Kitchen/ Dining Area	5.596m x 2.582m	18'4" x 8'6"
Utility	2.118m x 1.275m	6'11" x 4'2"
Cloakroom	1.500m x 1.100m	4'11" x 3'7"

B Boiler CYL Hot Water Cylinder

Some items shown in this key may be subject to change, and positions could vary from those indicated on this floorplan. Please refer to Sales Advisor for details of your selected plot. Computer generated image shown overleaf. External finishes, landscaping and configuration may vary from plot to plot. Please refer to Sales Advisor for further details. All dimensions are approximate and should not be used for carpet sizes, appliance spaces, or furniture. Furniture not to scale and all positions are indicative. Wardrobes are shown to suggest position only, and are not included as standard unless otherwise stated. We operate a policy of continuous improvement and individual features such as kitchen and bathroom layouts, doors, windows, garages and elevational treatments may vary from time to time. Consequently these particulars should be treated as general guidance only and do not constitute a contract, part of a contract or a warranty. 07/18