

The Burgess

Four bedroom detached home with integral garage

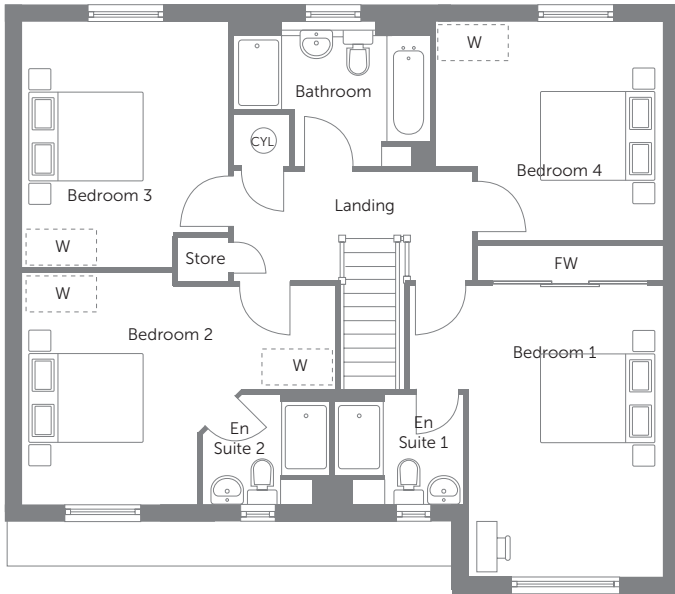


Please note Photo Voltaic (solar) panels shown above are indicative only. The location and number of panels are dependent on plot orientation. Please see Sales Advisor for details.

Bellway Homes Limited (Scotland)
Bothwell House, Hamilton Business Park
Caird Street, Hamilton ML3 0QA

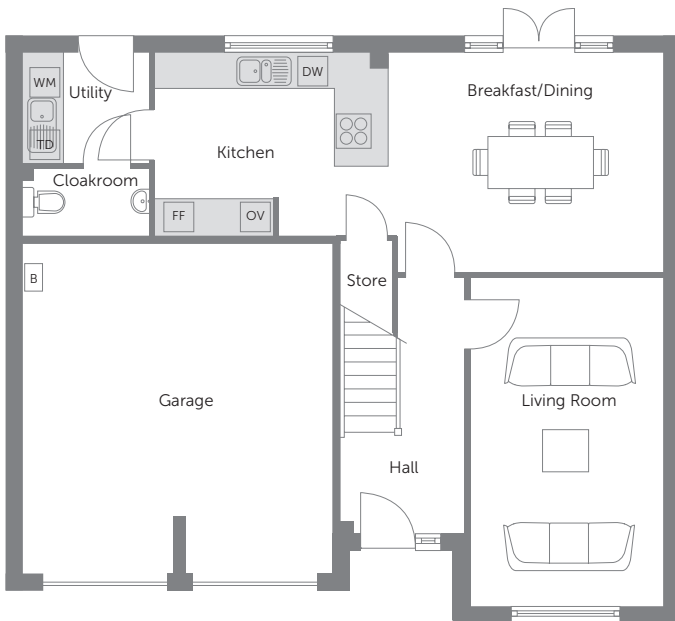
Telephone: 01698 477 440
www.bellway.co.uk

Bellway



First Floor

| | | |
|-----------|--------------------------------|------------------------------|
| Bedroom 1 | 4.155m x 4.770m (max) | 13'8" x 15'8" (max) |
| Bedroom 2 | 5.192m x 3.751m (max) (max) | 17'0" x 12'3" (max) (max) |
| Bedroom 3 | 3.421m x 4.097m (max) (max) | 11'3" x 13'5" (max) (max) |
| Bedroom 4 | 3.748m x 3.576m (max) (max) | 12'4" x 11'9" (max) (max) |



Ground Floor

| | | |
|------------------|-----------------|-----------------|
| Kitchen | 3.860m x 3.000m | 12'8" x 9'10" |
| Breakfast/Dining | 4.545m x 3.600m | 14'10" x 11'10" |
| Living Room | 3.168m x 5.422m | 10'5" x 17'9" |

B Boiler FF Fridge/Freezer Space OV Oven DW Dishwasher Space WM Washing Machine Space TD Tumble Dryer Space FW Fitted Wardrobes W Suggested Wardrobe Position CYL Hot Water Cylinder

Some items shown in this key may be subject to change, and positions could vary from those indicated on this floorplan. Please refer to Sales Advisor for details of your selected plot. Computer generated image shown overleaf. External finishes, landscaping and configuration may vary from plot to plot. Please refer to Sales Advisor for further details. All dimensions are approximate and should not be used for carpet sizes, appliance spaces, or furniture. Furniture not to scale and all positions are indicative. Wardrobes are shown to suggest position only, and are not included as standard unless otherwise stated. We operate a policy of continuous improvement and individual features such as kitchen and bathroom layouts, doors, windows, garages and elevational treatments may vary from time to time. Consequently these particulars should be treated as general guidance only and do not constitute a contract, part of a contract or a warranty. V2/05/17