

# The Maple

Four bedroom home

V1



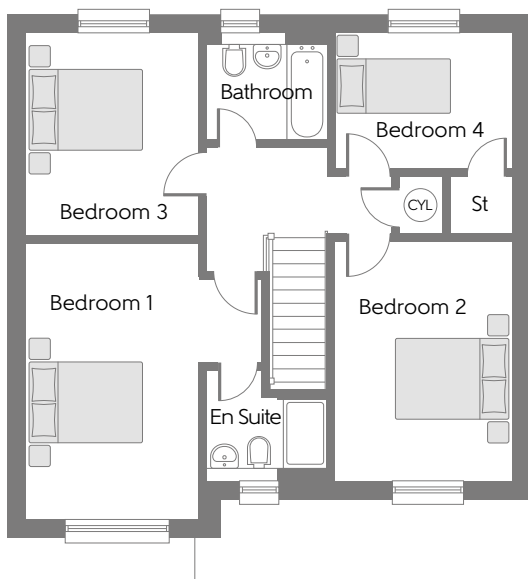
V3



Bellway Homes (North East Division)  
Bellway House, Kings Park, Kingsway North,  
Gateshead, Tyne and Wear NE11 0JH

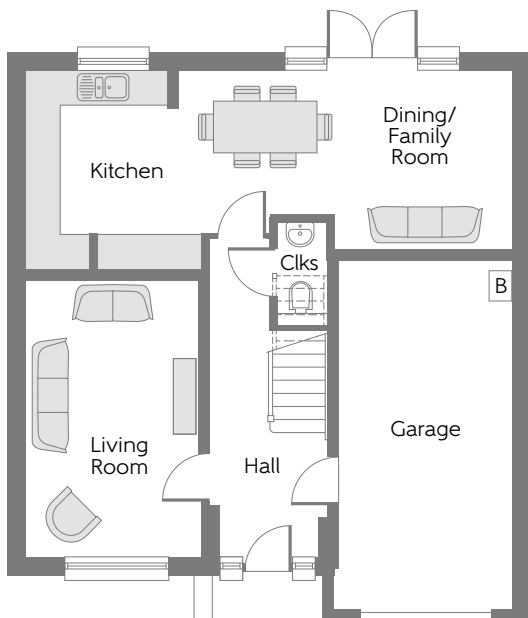
Telephone: 0191 482 8800  
Fax: 0191 491 4537  
[www.bellway.co.uk](http://www.bellway.co.uk)

**Bellway**



### First Floor

Bedroom 1	4.830m <small>(max)</small>	x	4.100m <small>(max)</small>	15'10"	x	13'6"	<small>(max)</small>
Bedroom 2	4.192m	x	3.122m	13'9"	x	10'3"	
Bedroom 3	3.532m	x	3.058m	11'7"	x	10'0"	
Bedroom 4	3.137m	x	2.412m	10'4"	x	7'11"	



### Ground Floor

Kitchen	3.450m	x	3.118m <small>(max)</small>	11'4"	x	10'3"	<small>(max)</small>
Dining/ Family Room	5.775m <small>(max)</small>	x	3.112m	19'0"	x	10'3"	<small>(max)</small>
Living Room	4.850m	x	3.056m	15'11"	x	10'0"	

B Boiler    
 CYL Hot Water Cylinder    
 Clks Cloakroom    
 St Store    
 --- Reduced Head Height

Some items shown in this key may be subject to change, and positions could vary from those indicated on this floorplan. Please refer to Sales Advisor for details of your selected plot. Computer generated image shown overleaf. External finishes, landscaping and configuration may vary from plot to plot. Please refer to Sales Advisor for further details. All dimensions are approximate and should not be used for carpet sizes, appliance spaces, or furniture. Furniture not to scale and all positions are indicative. We operate a policy of continuous improvement and individual features such as kitchen and bathroom layouts, doors, windows, garages and elevational treatments may vary from time to time. Consequently these particulars should be treated as general guidance only and do not constitute a contract, part of a contract or a warranty. 182030/06/18. The Maple -A/1336/v7/00/03.