

# The Hawthorne

Three bedroom home

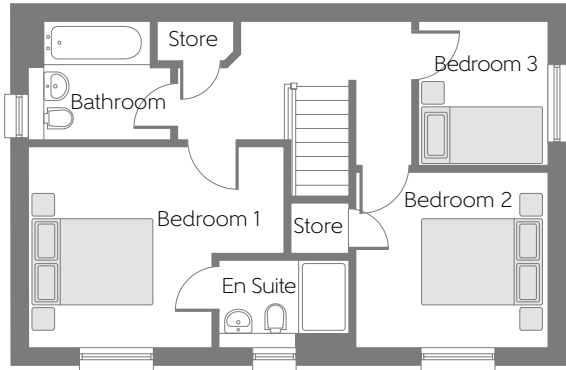
---



Bellway Homes Ltd, (Yorkshire Division)  
First Floor Unit 2150, Century Way,  
Leeds LS15 8ZB

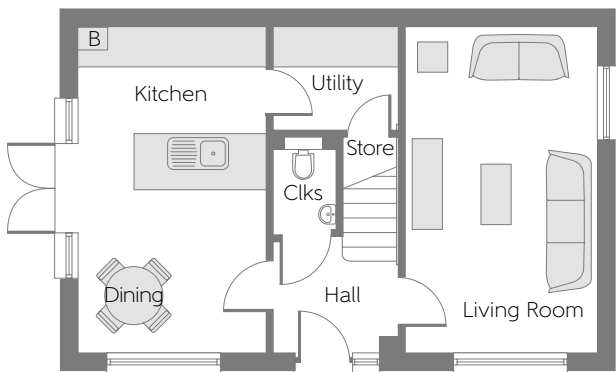
Telephone: 0113 3900 800  
[www.bellway.co.uk](http://www.bellway.co.uk)

**Bellway**



### First Floor

Bedroom 1	4.130m x 3.185m	13'6" x 10'5"
En Suite	2.100m x 1.385m	6'11" x 4'7"
Bedroom 2	3.055m x 2.765m	10'0" x 9'0"
Bedroom 3	2.300m x 2.050m	7'6" x 6'8"
Bathroom	2.275m x 1.880m	7'5" x 6'2"



### Ground Floor

Living Room	5.190m x 3.055m	17'0" x 10'0"
Kitchen/Dining	5.190m x 3.000m	17'0" x 9'10"
Utility	1.985m x 1.500m	6'6" x 4'11"
Cloakroom	1.600m x 0.980m	5'4" x 3'2"

**B** Boiler    **Clks** Cloakroom

Some items shown in this key may be subject to change, and positions could vary from those indicated on this floorplan. Please refer to Sales Advisor for details of your selected plot. Computer generated image shown overleaf. External finishes, landscaping and configuration may vary from plot to plot. Please refer to Sales Advisor for further details. All dimensions are approximate and should not be used for carpet sizes, appliance spaces, or furniture. Furniture not to scale and all positions are indicative. We operate a policy of continuous improvement and individual features such as kitchen and bathroom layouts, doors, windows, garages and elevational treatments may vary from time to time. Consequently these particulars should be treated as general guidance only and do not constitute a contract, part of a contract or a warranty. 172580/09/17 Hawthorne/Rev GF\_M, FF\_M, T1\_M.