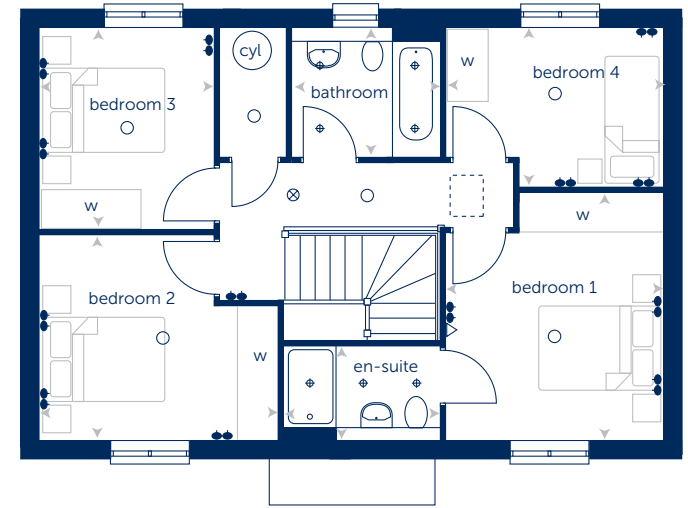


# The Rowan 4 bedroom home



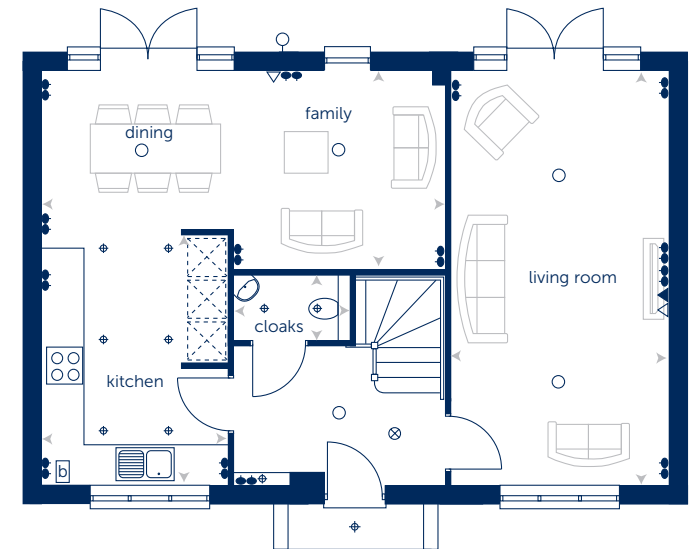
## First Floor

Bedroom 1	3.650m x 3.195m	11'11" x 10'5"
En-suite	2.295m x 1.350m	7'6" x 4'5"
Bedroom 2	3.500m x 3.005m	11'5" x 9'10"
Bedroom 3	2.960m x 2.560m	9'8" x 8'4"
Bedroom 4	3.170m x 2.315m	10'4" x 7'7"
Bathroom	2.170m x 1.880m	7'1" x 6'2"



## Ground Floor

Living Room	6.090m x 3.170m	19'11" x 10'4"
Kitchen	3.675m x 2.690m	12'0" x 8'9"
Dining/Family	5.920m x 2.890m	19'5" x 9'5"
Cloaks	1.685m x 0.900m	5'6" x 2'11"



- ⊗ smoke detector    ▲ telephone point    ⬇ thermostat    St cupboard
- ceiling light    ● double socket    ◊ external light    ⬇ downlighter
- △ TV aerial outlet    [b] boiler    e/s en-suite    W wardrobe space

Computer generated image shown above and opposite. External finishes, landscaping and configuration may vary from plot to plot. Please refer to Sales Advisor for further details. All dimensions are approximate and should not be used for carpet sizes, appliance spaces, or furniture. Furniture not to scale and all positions are indicative. Wardrobes are shown to suggest position only, and are not included as standard unless otherwise stated. We operate a policy of continuous improvement and individual features such as kitchen and bathroom layouts, doors, windows, garages and elevational treatments may vary from time to time. Consequently these particulars should be treated as general guidance only and do not constitute a contract, part of a contract or a warranty.