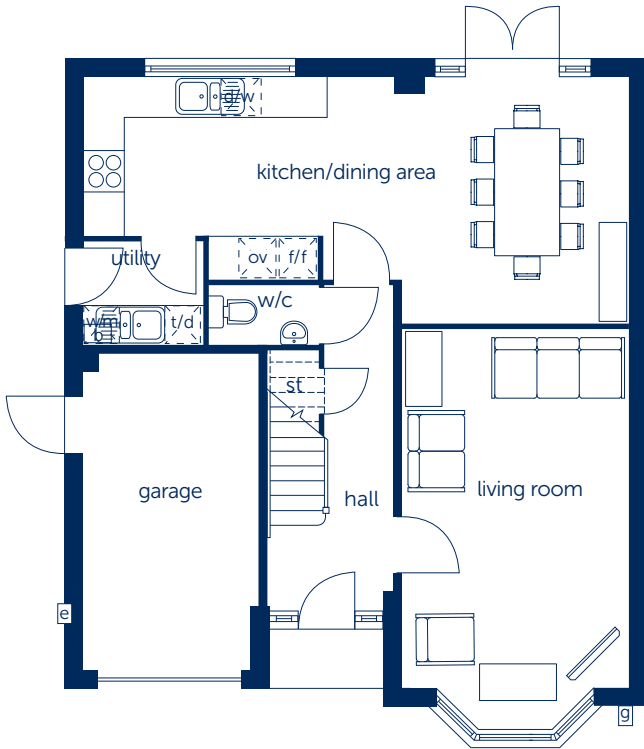


The Buxton (MW) Four bedroom detached home



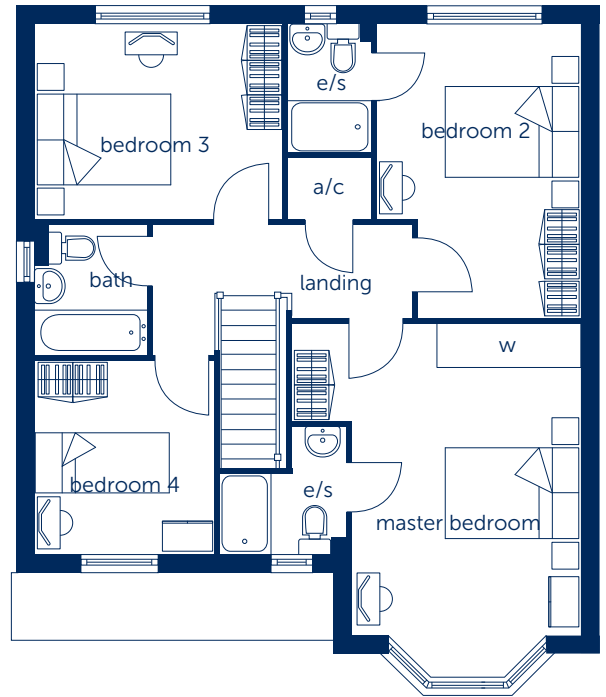
The Buxton (MW)

Four bedroom detached home



Ground Floor

Kitchen/ Dining Area	8.355m x 3.746m (max)	27'5" x 12'3" (max)
Living Room	5.959m x 3.455m (max into bay)	19'6" x 11'4" (max into bay)



First Floor

Master Bedroom	5.253m x 4.389m (max into bay) (max)	17'2" x 14'5" (max into bay) (max)
Bedroom 2	4.452m x 3.075m (max) (max)	14'7" x 10'1" (max) (max)
Bedroom 3	3.770m x 2.955m	12'4" x 9'8"
Bedroom 4	2.923m x 2.695m	9'7" x 8'10"

- a/c airing cupboard st cupboard t/d tumble dryer space d/w integrated dishwasher
- g gas meter e/s en suite f/f integrated fridge/freezer ov integrated double oven
- e electric meter b boiler w/m washing machine space W fitted wardrobe

Some items shown in this key may be subject to change, and positions could vary from those indicated on this floorplan. Please refer to Sales Advisor for details of your selected plot.

Computer generated image shown overleaf. External finishes, landscaping and configuration may vary from plot to plot. Please refer to Sales Advisor for further details. All dimensions are approximate and should not be used for carpet sizes, appliance spaces, or furniture. Furniture not to scale and all positions are indicative. Wardrobes are shown to suggest position only, and are not included as standard unless otherwise stated. We operate a policy of continuous improvement and individual features such as kitchen and bathroom layouts, doors, windows, garages and elevational treatments may vary from time to time. Consequently these particulars should be treated as general guidance only and do not constitute a contract, part of a contract or a warranty. 14/DL/R1/05/15

Bellway Homes Ltd,
(West Midlands Division)
Bellway House, Relay Point,
Relay Drive, Tamworth,
Staffordshire B77 5PA
Telephone 01827 255755
Fax 01827 255766
www.bellway.co.uk