

# The Olive

Two bedroom home

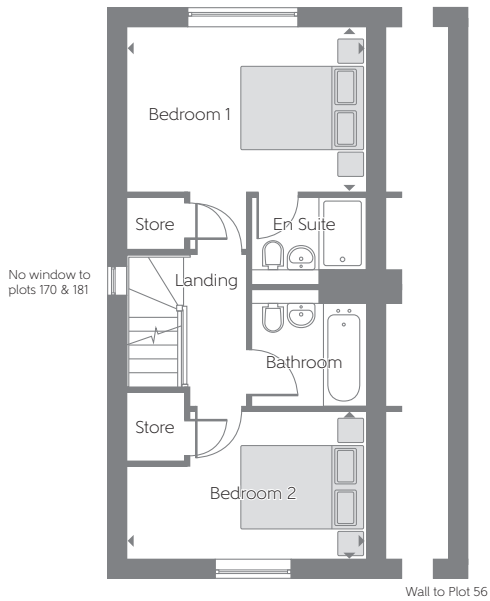


Please note: There are further elevational variations to this housetype. Also available as detached property. Please see Sales Advisor for details of your chosen plot.

Bellway Homes Limited (South West)  
The Hub, 500 Park Avenue, Aztec West,  
Almondsbury, Bristol, BS32 4RZ

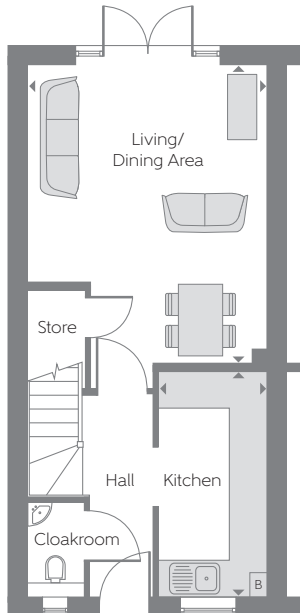
Telephone: 01454 451960  
[www.bellway.co.uk](http://www.bellway.co.uk)

**Bellway**



### First Floor

Bedroom 1	3.987m x 2.739m	13'0" x 8'11"
Bedroom 2	3.987m x 2.486m (max) (max)	13'0" x 8'1" (max) (max)



### Ground Floor

Kitchen	3.767m x 1.822m	12'4" x 5'11"
Living/ Dining Area	4.967m x 3.987m (max) (max)	16'3" x 13'0" (max) (max)

760 sq ft

**B** Boiler ▶ Indicates where dimension taken from

Some items shown in this key may be subject to change, and positions could vary from those indicated on this floorplan. Please refer to Sales Advisor for details of your selected plot. Computer generated image shown overleaf. External finishes, landscaping and configuration may vary from plot to plot. Please refer to Sales Advisor for further details. All dimensions are approximate and should not be used for carpet sizes, appliance spaces, or furniture. Furniture not to scale and all positions are indicative. Wardrobes are shown to suggest position only, and are not included as standard unless otherwise stated. We operate a policy of continuous improvement and individual features such as kitchen and bathroom layouts, doors, windows, garages and elevational treatments may vary from time to time. Consequently these particulars should be treated as general guidance only and do not constitute a contract, part of a contract or a warranty. 09/17