

# The Bromley

Five bedroom home

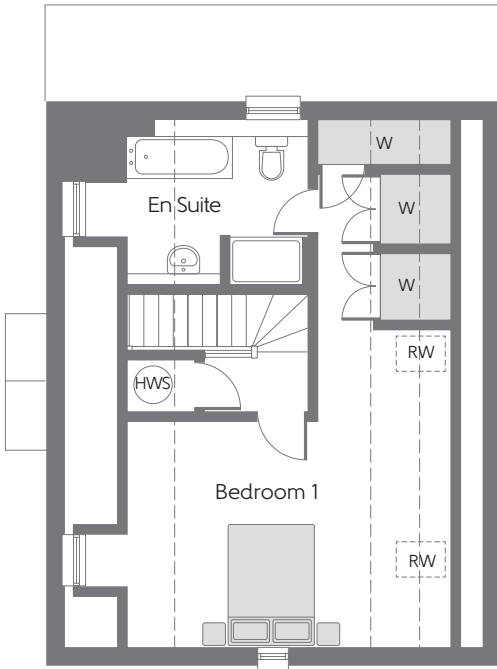
---



Bellway Homes (South Midlands Division)  
Ground Floor, 1120 Elliott Court, Coventry Business Park,  
Herald Avenue, Coventry CV5 6UB

Telephone: 02476 521 014  
[www.bellway.co.uk](http://www.bellway.co.uk)

**Bellway**



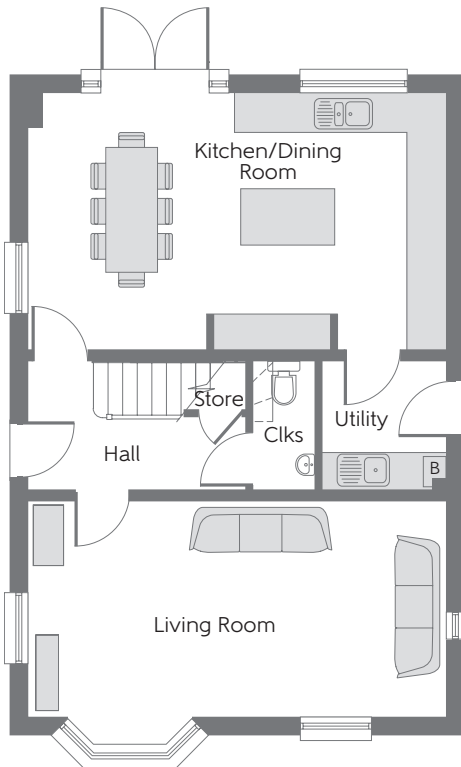
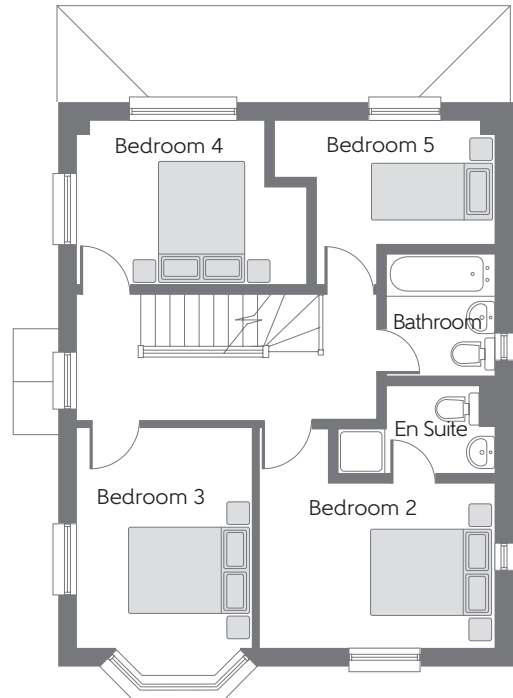
**Second Floor**

Bedroom 1

5.528m x 5.144m (max) 18'1" x 16'10" (max)

**First Floor**

Bedroom 2	3.691m x 3.484m (max)	12'1" x 11'5" (max)
Bedroom 3	3.802m x 2.773m (max)	12'5" x 9'1" (max)
Bedroom 4	3.636m x 2.587m	11'11" x 8'5"
Bedroom 5	3.478m x 2.587m (max)	11'5" x 8'5" (max)



**Ground Floor**

Kitchen/ Dining Room	6.614m x 4.100m	21'8" x 13'5"
Living Room	6.614m x 3.936m (max)	21'8" x 12'11" (max)

**B** Boiler    **Clks** Cloakroom    **W** Fitted Wardrobe    **HWS** Hot Water Storage    **RW** Roof Window    --- Reduced Head Height

Some items shown in this key may be subject to change, and positions could vary from those indicated on this floorplan. Please refer to Sales Advisor for details of your selected plot. Computer generated image shown overleaf. External finishes, landscaping and configuration may vary from plot to plot. Please refer to Sales Advisor for further details. All dimensions are approximate and should not be used for carpet sizes, appliance spaces or furniture. Furniture not to scale and all positions are indicative. We operate a policy of continuous improvement and individual features such as kitchen and bathroom layouts, doors, windows, garages and elevational treatments may vary from time to time. Consequently these particulars should be treated as general guidance only and do not constitute a contract, part of a contract or a warranty. 168579/07/17.