

# The Lewes

Three bedroom home

---



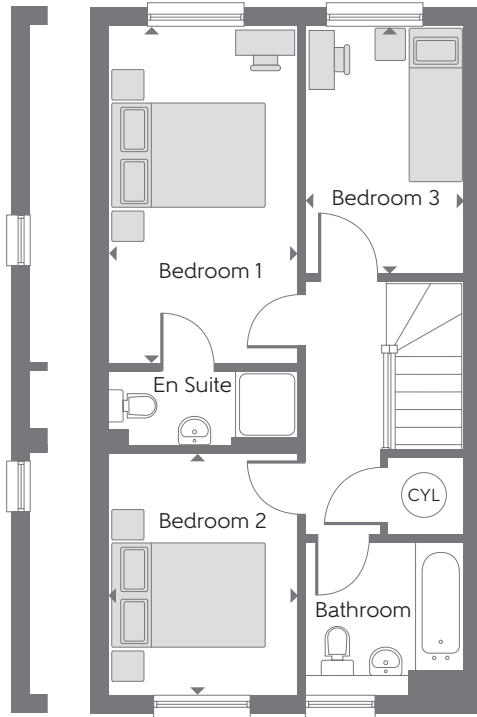
Computer generated image is based on Mews V4 plots 166 and 165, other plots may vary. Please refer to the Sales Advisor for details on your selected plot.

Bellway Homes Limited (South London Division)  
Bellway House, London Road North,  
Merstham, Surrey RH1 3YU

Telephone: 01737 644911  
[www.bellway.co.uk](http://www.bellway.co.uk)

**Bellway**

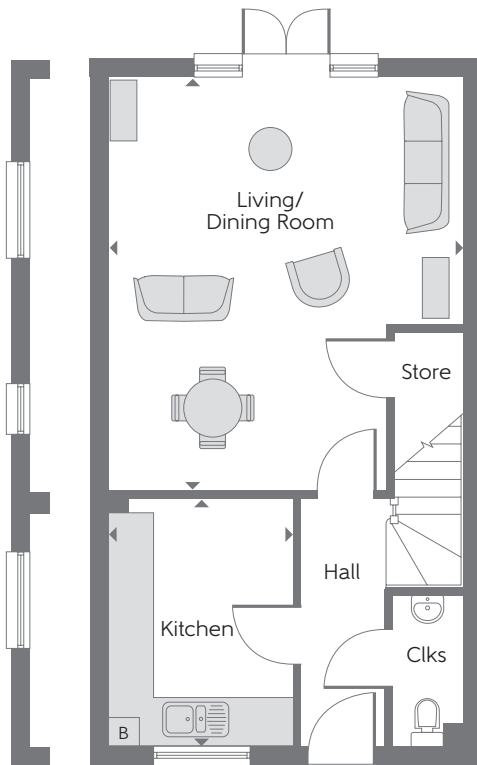
Variation to plots  
215, 216, 219,  
242 & 271 only



**First Floor**

|           |                 |              |
|-----------|-----------------|--------------|
| Bedroom 1 | 4.460m x 2.500m | 14'7" x 8'2" |
| Bedroom 2 | 3.140m x 2.500m | 10'3" x 8'2" |
| Bedroom 3 | 3.280m x 2.060m | 10'9" x 6'9" |

Variation to plots  
215, 216, 219,  
242 & 271 only



**Ground Floor**

|                        |                 |                |
|------------------------|-----------------|----------------|
| Kitchen                | 3.240m x 2.440m | 10'7" x 8'0"   |
| Living/<br>Dining Room | 5.450m x 4.650m | 17'10" x 15'3" |

Kitchen layout varies  
to plots 242, 270 and 271

► Indicates where dimensions are taken from

**B** Boiler    Clks Cloakroom    **CYL** Hot Water Cylinder

Some items shown in this key may be subject to change, and positions could vary from those indicated on this floorplan. Please refer to Sales Advisor for details of your selected plot. Computer generated image shown overleaf. External finishes, landscaping and configuration may vary from plot to plot. Please refer to Sales Advisor for further details. All dimensions are approximate and should not be used for carpet sizes, appliance spaces or furniture. Furniture not to scale and all positions are indicative. We operate a policy of continuous improvement and individual features such as kitchen and bathroom layouts, doors, windows, garages and elevational treatments may vary from time to time. Consequently these particulars should be treated as general guidance only and do not constitute a contract, part of a contract or a warranty. Type H324. 179111/01/18.