

# The Victoria

Four bedroom detached home with integral garage

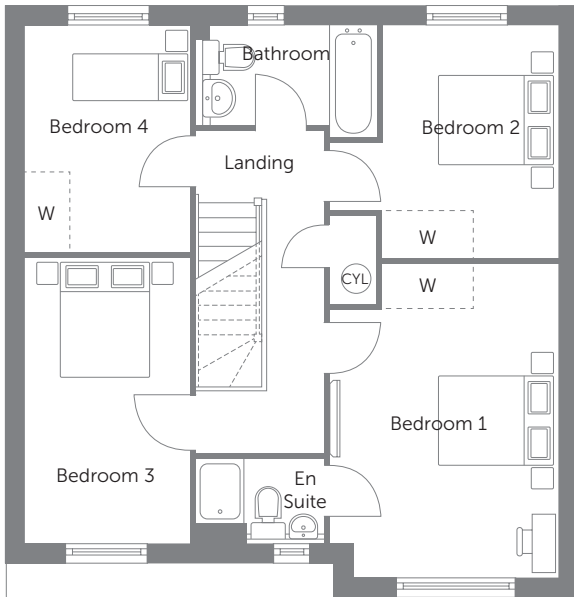
---



Bellway Homes (Scotland Division)  
Bothwell House, Hamilton Business Park  
Caird Street, Hamilton ML3 0QA

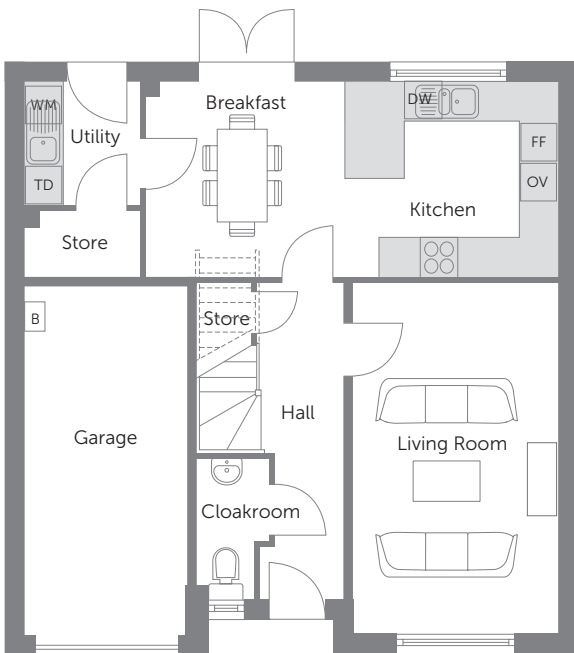
Telephone: 01698 477 440  
[www.bellway.co.uk](http://www.bellway.co.uk)

**Bellway**



### First Floor

Bedroom 1	3.516m x 4.154m (min)	11'6" x 13'8" (min)
Bedroom 2	2.698m x 3.568m (min)	8'10" x 11'8" (min)
Bedroom 3	2.560m x 4.391m	8'5" x 14'5"
Bedroom 4	2.560m x 3.498m	8'5" x 11'6"



### Ground Floor

Kitchen/Breakfast	6.366m x 3.010m	20'11" x 9'11"
Living Room	3.152m x 5.417m	10'4" x 17'9"

B Boiler   
 FF Fridge/Freezer Space   
 OV Oven   
 TD Tumble Dryer Space   
 DW Dishwasher Space   
 WM Washing Machine Space   
 W Suggested Wardrobe Position   
 CYL Hot Water Cylinder

Some items shown in this key may be subject to change, and positions could vary from those indicated on this floorplan. Please refer to Sales Advisor for details of your selected plot. Computer generated image shown overleaf. External finishes, landscaping and configuration may vary from plot to plot. Please refer to Sales Advisor for further details. All dimensions are approximate and should not be used for carpet sizes, appliance spaces, or furniture. Furniture not to scale and all positions are indicative. Wardrobes are shown to suggest position only, and are not included as standard unless otherwise stated. We operate a policy of continuous improvement and individual features such as kitchen and bathroom layouts, doors, windows, garages and elevational treatments may vary from time to time. Consequently these particulars should be treated as general guidance only and do not constitute a contract, part of a contract or a warranty. 07/16