

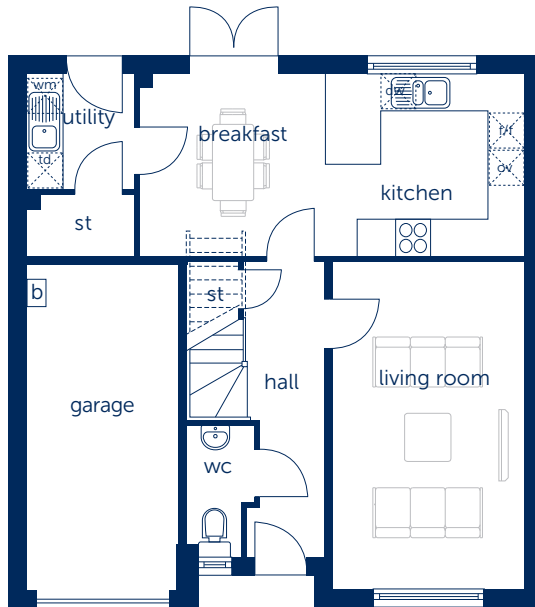
The Victoria

Four bedroom detached home with integral garage



The Victoria

Four bedroom detached home with integral garage



Ground Floor

Kitchen/Breakfast	6.366m x 3.010m	20'11" x 9'11"
Living Room	3.152m x 5.417m	10'4" x 17'9"



First Floor

Master Bedroom	3.516m x 4.154m†	11'6" x 13'8"†
Bedroom 2	2.698m† x 3.568m	8'10"† x 11'8"
Bedroom 3	2.560m x 4.391m	8'5" x 14'5"
Bedroom 4	2.560m x 3.498m	8'5" x 11'6"

† minimum dimensions

st cupboard (cy) hot water cylinder (ov) double oven (td) tumble dryer space (b) boiler
 e/s en-suite (wm) washing machine space (dw) dishwasher space (f/f) fridge freezer space

Some items shown in this key may be subject to change, and positions could vary from those indicated on this floorplan. Please refer to Sales Advisor for details of your selected plot.

Computer generated image shown overleaf. External finishes, landscaping and configuration may vary from plot to plot. Please refer to Sales Advisor for further details. All dimensions are approximate and should not be used for carpet sizes, appliance spaces, or furniture. Furniture not to scale and all positions are indicative. Wardrobes are shown to suggest position only, and are not included as standard unless otherwise stated. We operate a policy of continuous improvement and individual features such as kitchen and bathroom layouts, doors, windows, garages and elevational treatments may vary from time to time. Consequently these particulars should be treated as general guidance only and do not constitute a contract, part of a contract or a warranty.

V1/03/15

Bellway Homes Ltd,
 (Scotland Division)
 Bothwell House,
 Hamilton Business Park,
 Caird Street, Hamilton ML3 0QA
 Telephone 01698 477440
 Fax 01698 477441
 www.bellway.co.uk