

# The Wavertree

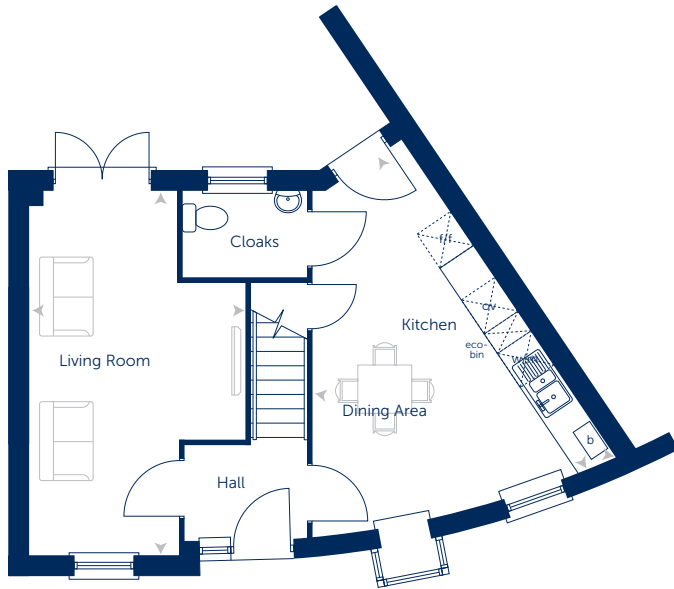
Four bedroom home



**Bellway**

# The Wavertree at Williamson Place

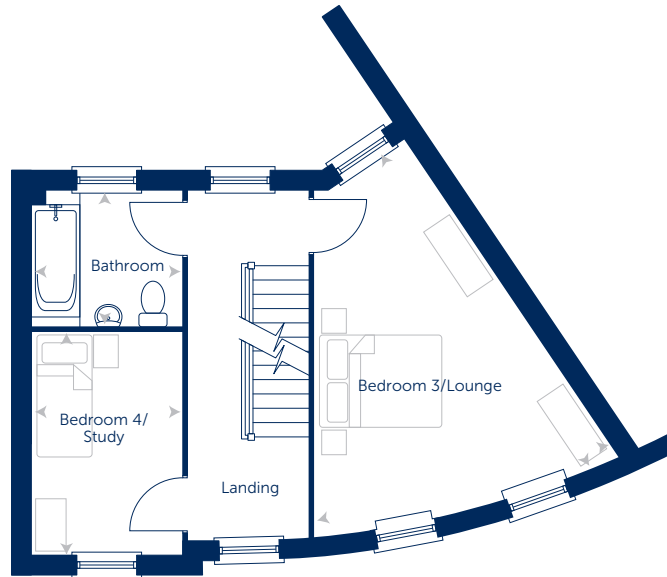
Four bedroom home



## Ground Floor

Kitchen/Dining Area	4535* x 5770mm*	14'10"* x 18'11"*
Living Room	3293* x 5575mm*	10'10"* x 18'3"*
Cloaks	1900 x 1310mm	6'3" x 4'4"

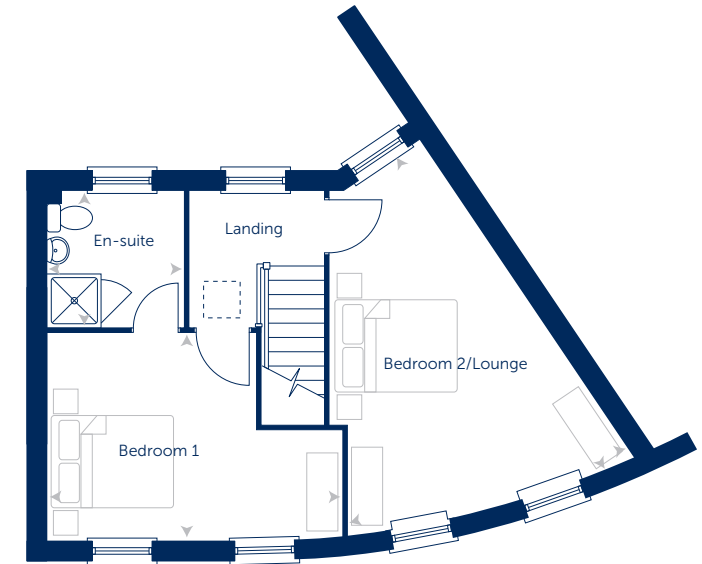
\* maximum dimensions † minimum dimensions



## First Floor

Bedroom 3/Lounge	4761* x 5788mm*	15'7"* x 19'0"*
Bedroom 4/Study	2275 x 3407mm	7'6" x 11'2"
Bathroom	2275 x 2075mm	7'6" x 6'10"

\* maximum dimensions † minimum dimensions



## Second Floor

Bedroom 2/Lounge	4484* x 5788mm*	14'9"* x 19'0"*
Bedroom 1	4516 x 3182mm	14'10" x 10'5"
En-suite	2086 x 2075mm	6'10" x 6'10"

\* maximum dimensions † minimum dimensions

Items shown may be subject to change, and positions could vary from those indicated on this floorplan. Please refer to Sales Advisor for details of your selected plot.

Computer generated image shown overleaf. External finishes, landscaping and configuration may vary from plot to plot. Please refer to Sales Advisor for further details. All dimensions are approximate and should not be used for carpet sizes, appliance spaces, or furniture. Furniture not to scale and all positions are indicative. Wardrobes are shown to suggest position only, and are not included as standard unless otherwise stated. We operate a policy of continuous improvement and individual features such as kitchen and bathroom layouts, doors, windows, garages and elevational treatments may vary from time to time. Consequently these particulars should be treated as general guidance only and do not constitute a contract, part of a contract or a warranty.

Bellway Homes Ltd,  
(North West Division)  
2 Alderman Road,  
Liverpool L24 9LR  
Telephone 0151 486 2900  
Fax 0151 336 9392  
[www.bellway.co.uk](http://www.bellway.co.uk)