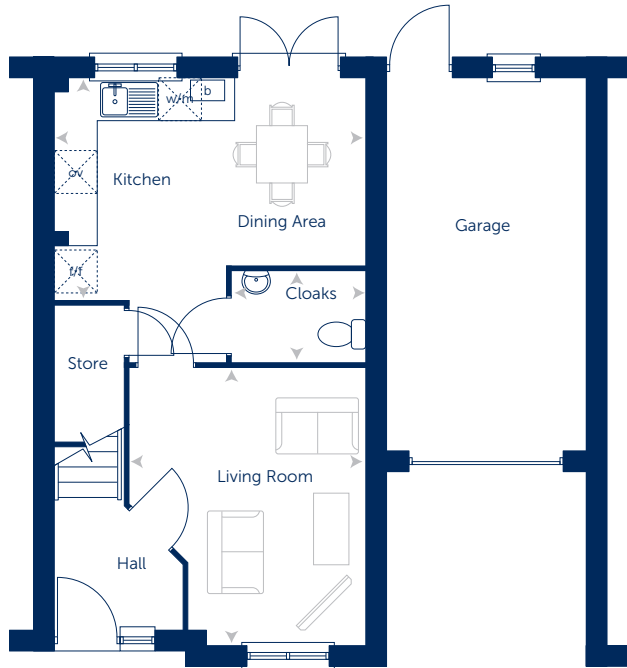


The Lingham Four bedroom home



The Lingham at Williamson Place

Four bedroom home



Ground Floor

Kitchen/Dining Area	4495 x 3225mm	14'9" x 10'7"
Living Room	3416* x 4028mm*	11'2"* x 13'3"*
Cloaks	1923 x 1320mm	6'4" x 4'4"

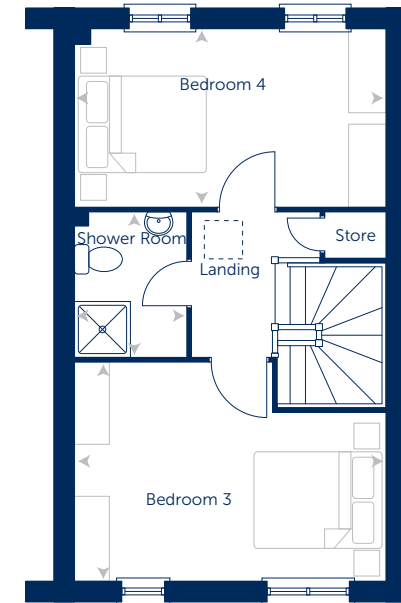
* maximum dimensions



First Floor

Bedroom 1	4495 x 2650mm*	14'9" x 8'8"*
Bedroom 2	2342 x 2136mm	7'8" x 7'0"
Sun Room	2874 x 5395mm	9'5" x 17'8"
Bathroom	2060 x 2136mm	6'9" x 7'0"

* maximum dimensions



Second Floor

Bedroom 3	4495 x 3164mm*	14'9" x 10'5"*
Bedroom 4	4495 x 2560mm	14'9" x 8'5"
Shower Room	1610 x 2110mm	5'3" x 6'11"

* maximum dimensions

Items shown may be subject to change, and positions could vary from those indicated on this floorplan. Please refer to Sales Advisor for details of your selected plot.

Computer generated image shown overleaf. External finishes, landscaping and configuration may vary from plot to plot. Please refer to Sales Advisor for further details. All dimensions are approximate and should not be used for carpet sizes, appliance spaces, or furniture. Furniture not to scale and all positions are indicative. Wardrobes are shown to suggest position only, and are not included as standard unless otherwise stated. We operate a policy of continuous improvement and individual features such as kitchen and bathroom layouts, doors, windows, garages and elevational treatments may vary from time to time. Consequently these particulars should be treated as general guidance only and do not constitute a contract, part of a contract or a warranty.

Bellway Homes Ltd,
(North West Division)
2 Alderman Road,
Liverpool L24 9LR
Telephone 0151 486 2900
Fax 0151 336 9392
www.bellway.co.uk