

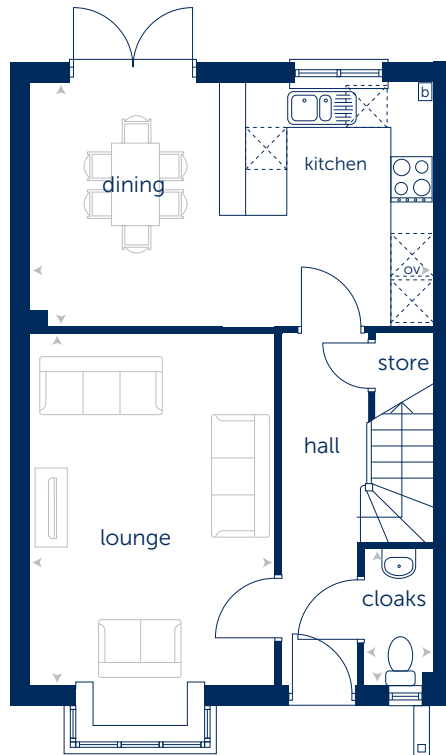
# The Weston Three bedroom home



**Bellway**

# The Weston at Melling View

Three bedroom home



## Ground Floor

Lounge	3335 x 4895mm (exc bay)	10'11" x 16'0" (exc bay)
Kitchen/Dining	5546 x 3341mm	18'2" x 10'11"
Cloaks	935 x 1900mm	3'0" x 6'2"



## First Floor

Bedroom 1	3410* x 3700mm	11'2"* x 12'1"
En-suite	1992 x 970mm†	6'6" x 3'2"†
Bedroom 2	2658* x 3398mm*	8'9"* x 11'2"*
Bedroom 3	2795* x 2730mm†	9'2"* x 8'11"†
Bathroom	2043 x 1900mm	6'8" x 6'3"

\* maximum dimensions † minimum dimensions

Items shown in this key may be subject to change, and positions could vary from those indicated on this floorplan. Please refer to Sales Advisor for details of your selected plot.

Computer generated image shown overleaf. External finishes, landscaping and configuration may vary from plot to plot. Please refer to Sales Advisor for further details. All dimensions are approximate and should not be used for carpet sizes, appliance spaces, or furniture. Furniture not to scale and all positions are indicative. Wardrobes are shown to suggest position only, and are not included as standard unless otherwise stated. We operate a policy of continuous improvement and individual features such as kitchen and bathroom layouts, doors, windows, garages and elevational treatments may vary from time to time. Consequently these particulars should be treated as general guidance only and do not constitute a contract, part of a contract or a warranty.

Bellway Homes Ltd,  
(North West Division)  
2 Alderman Road,  
Liverpool L24 9LR  
Telephone 0151 486 2900  
Fax 0151 336 9392  
[www.bellway.co.uk](http://www.bellway.co.uk)