

The Oakwood

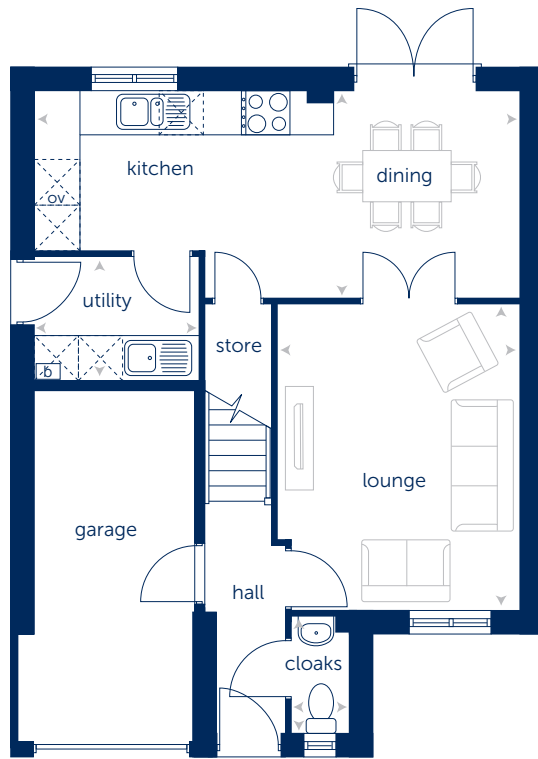
Four bedroom home



Bellway

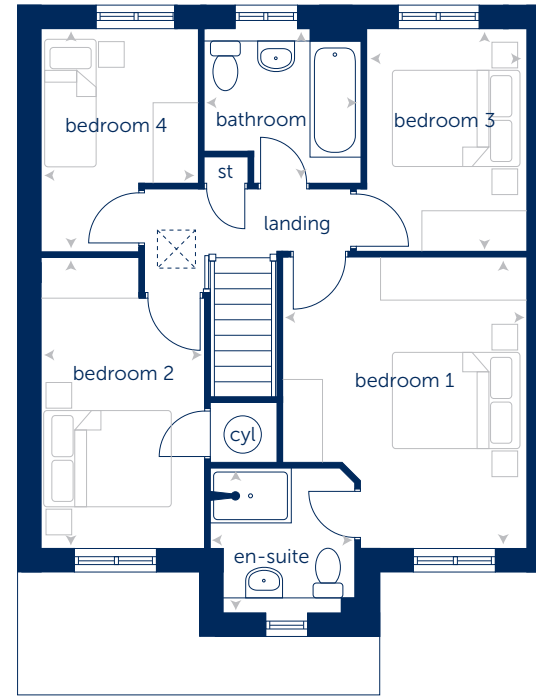
The Oakwood at Melling View

Four bedroom home



Ground Floor

Lounge	3563* x 4432mm*	11'8"* x 14'6"*
Kitchen/Dining	7146* x 3017mm*	23'5"* x 9'11"*
Utility	2390 x 1748mm	7'10" x 5'9"
Cloaks	860 x 1707mm	2'10" x 5'7"



First Floor

Bedroom 1	3548* x 4230mm*	11'8"* x 13'11"*
En-suite	2105* x 2084mm	6'11"* x 6'10"
Bedroom 2	2457* x 4244mm*	8'1"* x 13'11"*
Bedroom 3	2360† x 3275mm	7'9"† x 10'9"
Bedroom 4	2305* x 3261mm*	7'7"* x 10'8"*
Bathroom	2295 x 2276mm	7'6" x 7'6"

* maximum dimensions † minimum dimensions

Items shown in this key may be subject to change, and positions could vary from those indicated on this floorplan. Please refer to Sales Advisor for details of your selected plot.

Computer generated image shown overleaf. External finishes, landscaping and configuration may vary from plot to plot. Please refer to Sales Advisor for further details. All dimensions are approximate and should not be used for carpet sizes, appliance spaces, or furniture. Furniture not to scale and all positions are indicative. Wardrobes are shown to suggest position only, and are not included as standard unless otherwise stated. We operate a policy of continuous improvement and individual features such as kitchen and bathroom layouts, doors, windows, garages and elevational treatments may vary from time to time. Consequently these particulars should be treated as general guidance only and do not constitute a contract, part of a contract or a warranty.

Bellway Homes Ltd,
(North West Division)
2 Alderman Road,
Liverpool L24 9LR
Telephone 0151 486 2900
Fax 0151 336 9392
www.bellway.co.uk