

The Lansdown

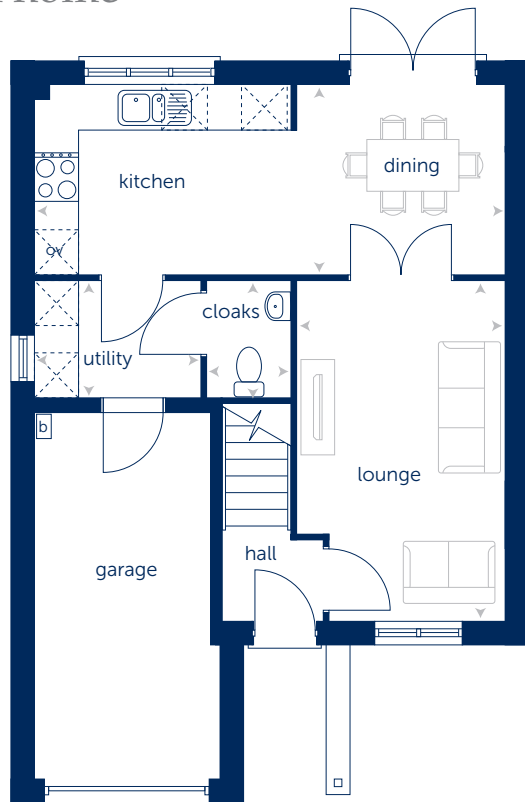
Three bedroom home



Bellway

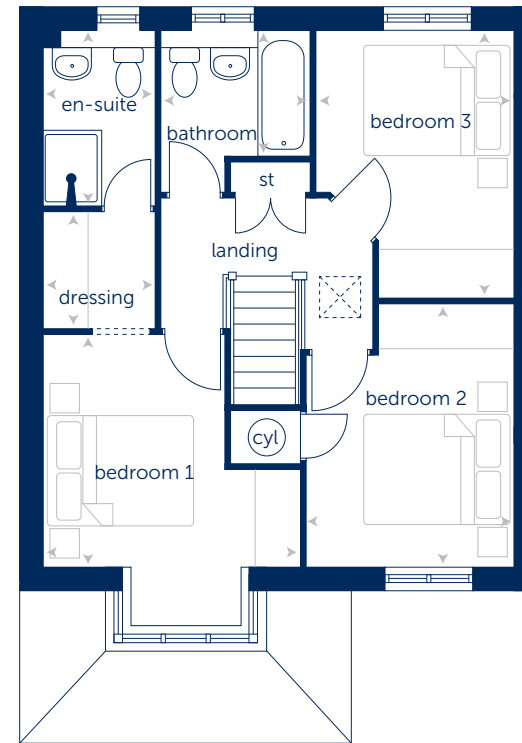
The Lansdown at Melling View

Three bedroom home



Ground Floor

Lounge	2799* x 4588mm*	9'2"* x 15'1"*
Kitchen/Dining	6361 x 2580mm	20'10" x 8'6"
Utility	2241 x 1596mm	7'4" x 5'3"
Cloaks	1135 x 1596mm	3'9" x 5'3"



First Floor

Bedroom 1	3470* x 3145mm (exc bay)	11'5"* x 10'4" (exc bay)
En-suite	1510 x 2350mm	4'11" x 7'9"
Dressing	1510 x 1580mm	4'11" x 5'2"
Bedroom 2	2799* x 3570mm*	9'2"* x 11'9"*
Bedroom 3	2665* x 3598mm*	8'9"* x 11'10"*
Bathroom	1990 x 2150mm*	6'6" x 7'1"*

* maximum dimensions

Items shown in this key may be subject to change, and positions could vary from those indicated on this floorplan. Please refer to Sales Advisor for details of your selected plot.

Computer generated image shown overleaf. External finishes, landscaping and configuration may vary from plot to plot. Please refer to Sales Advisor for further details. All dimensions are approximate and should not be used for carpet sizes, appliance spaces, or furniture. Furniture not to scale and all positions are indicative. Wardrobes are shown to suggest position only, and are not included as standard unless otherwise stated. We operate a policy of continuous improvement and individual features such as kitchen and bathroom layouts, doors, windows, garages and elevational treatments may vary from time to time. Consequently these particulars should be treated as general guidance only and do not constitute a contract, part of a contract or a warranty.

Bellway Homes Ltd,
(North West Division)
2 Alderman Road,
Liverpool L24 9LR
Telephone 0151 486 2900
Fax 0151 336 9392
www.bellway.co.uk