

# The Japonica Alt

Three bedroom home

---

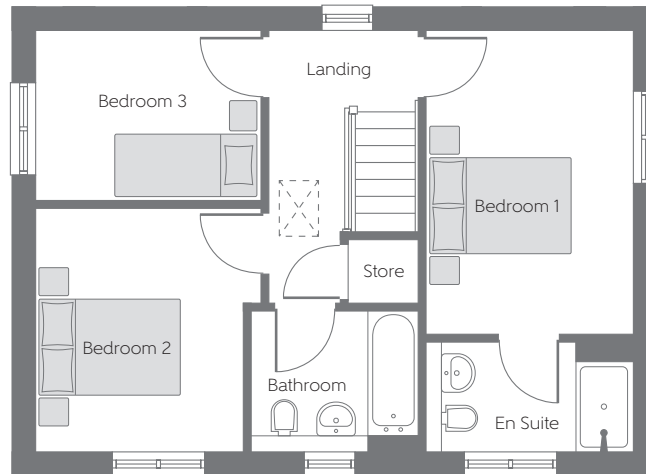


Bellway Homes Limited (North West),  
2 Alderman Road,  
Liverpool L24 9LR

Telephone: 0151 486 2900  
[www.bellway.co.uk](http://www.bellway.co.uk)

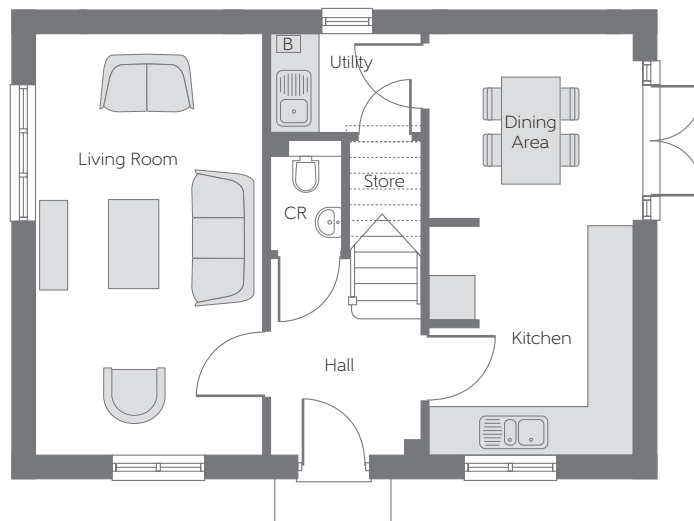
**Bellway**

# The Japonica Alt at Lathom Pastures



## First Floor

Bedroom 1	4.075m x 2.771m	13'4" x 9'1"
En Suite	2.771m x 1.477m	9'1" x 4'10"
Bedroom 2	3.274m x 3.027m (max)	10'9" x 9'11" (max)
Bedroom 3	3.027m x 2.278m	9'11" x 7'6"
Bathroom	2.261m x 1.900m	7'5" x 6'3"



## Ground Floor

Living Room	5.640m x 3.013m	18'6" x 9'11"
Kitchen/ Dining Area	5.640m x 2.712m	18'6" x 8'11"
Utility	1.978m x 1.322m	6'6" x 4'4"
Cloakroom	1.502m x 0.942m	4'11" x 3'1"

B Boiler CR Cloakroom

Some items shown in this key may be subject to change, and positions could vary from those indicated on this floorplan. Please refer to Sales Advisor for details of your selected plot. Computer generated image shown overleaf. External finishes, landscaping and configuration may vary from plot to plot. Please refer to Sales Advisor for further details. All dimensions are approximate and should not be used for carpet sizes, appliance spaces, or furniture. Furniture not to scale and all positions are indicative. Wardrobes are shown to suggest position only, and are not included as standard unless otherwise stated. We operate a policy of continuous improvement and individual features such as kitchen and bathroom layouts, doors, windows, garages and elevational treatments may vary from time to time. Consequently these particulars should be treated as general guidance only and do not constitute a contract, part of a contract or a warranty. 04/18