

The Fairhaven

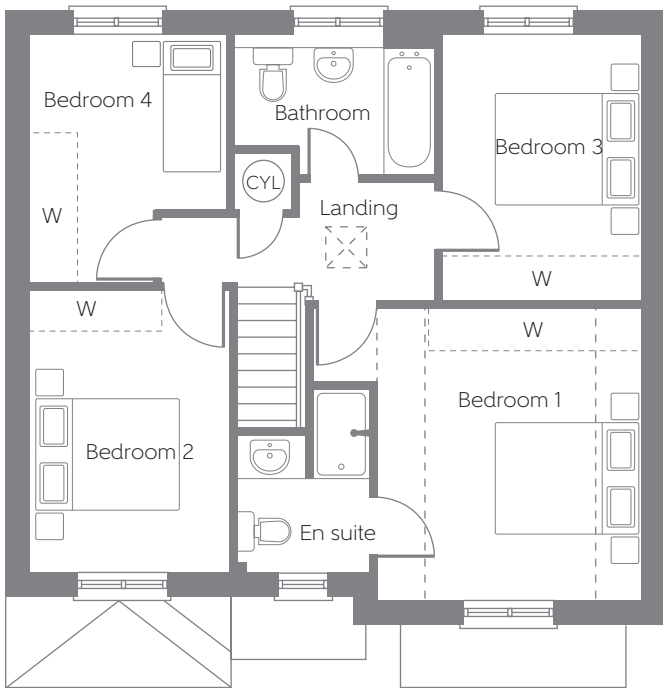
Four bedroom home



Bellway Homes (North West Division)
2 Alderman Road
Liverpool L24 9LR

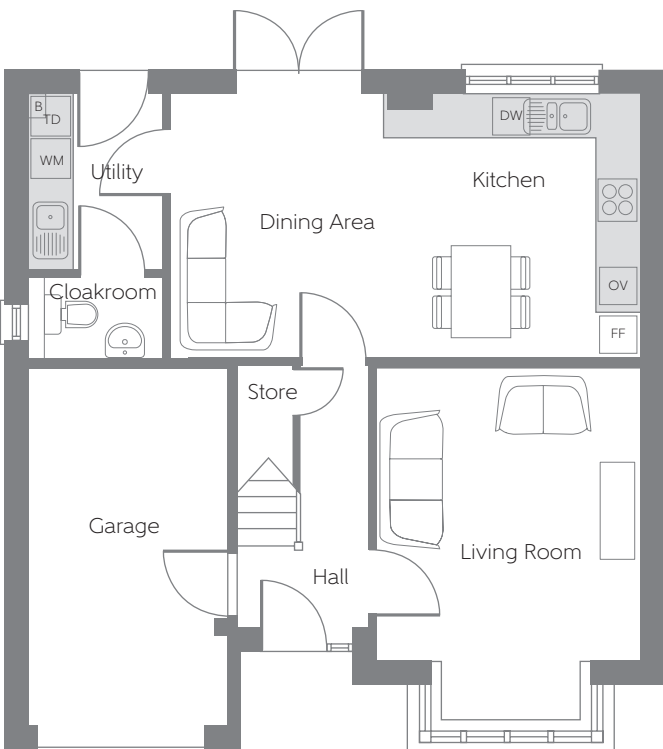
Telephone: 0151 486 2900
www.bellway.co.uk

Bellway



First Floor

Bedroom 1	3.550m x 3.962m (min)	11'8" x 13'0" (min)
En suite	1.812m x 1.797m (max)	5'11" x 5'11" (max)
Bedroom 2	2.707m x 3.740m	8'11" x 12'3"
Bedroom 3	2.680m x 3.595m	8'10" x 11'10"
Bedroom 4	2.677m x 3.377m (max) (max)	8'9" x 11'1" (max) (max)
Bathroom	2.707m x 1.890m (max) (max)	8'11" x 6'2" (max) (max)



Ground Floor

Living Room (exc bay)	3.550m x 3.962m	11'8" x 13'0"
Kitchen/Dining Area	6.342m x 3.548m	20'10" x 11'8"
Utility	1.758m x 2.370m	5'9" x 7'9"
Cloakroom	1.758m x 1.085m	5'9" x 3'7"

FF Fridge/Freezer Space DW Dishwasher Space OV Oven WM Washing Machine Space WM Tumble Dryer Space B Boiler W Suggested Wardrobe Position CYL Hot Water Cylinder - - - Vaulted Ceiling

Some items shown in this key may be subject to change, and positions could vary from those indicated on this floorplan. Please refer to Sales Advisor for details of your selected plot. Computer generated image shown overleaf. External finishes, landscaping and configuration may vary from plot to plot. Please refer to Sales Advisor for further details. All dimensions are approximate and should not be used for carpet sizes, appliance spaces, or furniture. Furniture not to scale and all positions are indicative. Wardrobes are shown to suggest position only, and are not included as standard unless otherwise stated. We operate a policy of continuous improvement and individual features such as kitchen and bathroom layouts, doors, windows, garages and elevational treatments may vary from time to time. Consequently these particulars should be treated as general guidance only and do not constitute a contract, part of a contract or a warranty. 09/16 KH