

The Horley

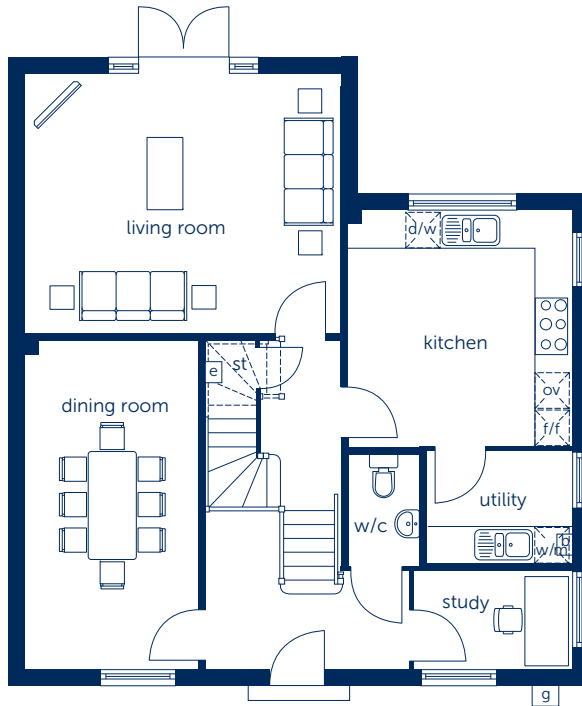
Five bedroom home



Bellway

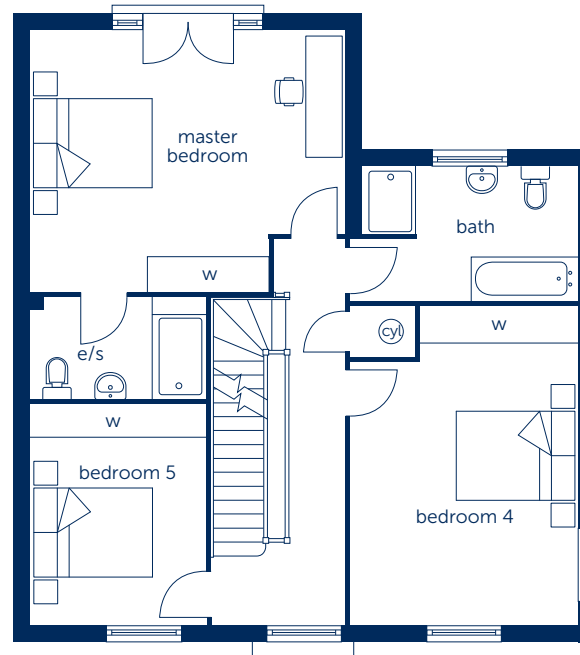
The Horley

Five bedroom home



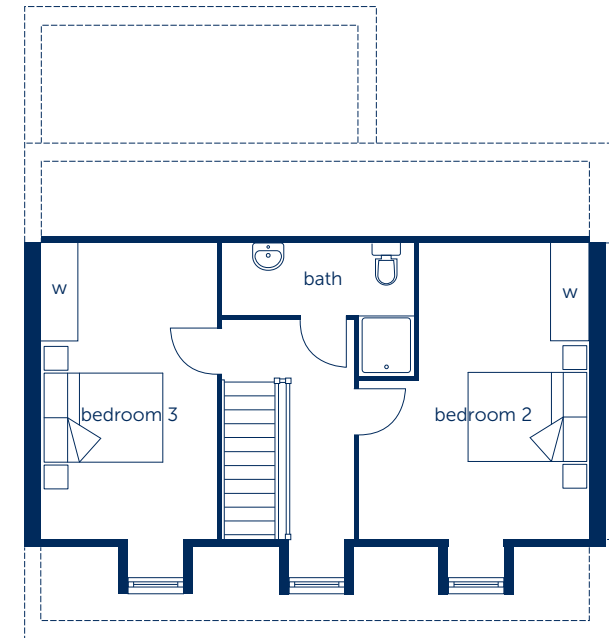
Ground Floor

Kitchen	3.875m x 3.675m	12'9" x 12'1"
Living Room	5.185m x 4.250m	17'0" x 13'11"
Dining room	5.400m x 2.886m	17'9" x 9'6"
Study	2.595m x 1.600m	8'6" x 5'3"



First Floor

Master Bedroom	5.185m x 4.305m	17'0" x 14'1"
Bedroom 4	5.256m x 3.732m	17'3" x 12'3"
Bedroom 5	3.639m x 2.886m	11'11" x 9'6"



Second Floor

Bedroom 2	5.683m x 3.776m	18'8" x 12'5"
Bedroom 3	5.683m x 2.886m	18'8" x 9'6"

boiler	hot water cylinder	oven	dishwasher
gas meter	cupboard	washing machine	wardrobe
electric meter	en suite	fridge/freezer	reduced head height

Some items shown in this key may be subject to change, and positions could vary from those indicated on this floorplan. Please refer to Sales Advisor for details of your selected plot

Computer generated image shown overleaf. External finishes, landscaping and configuration may vary from plot to plot. Please refer to Sales Advisor for further details. All dimensions are approximate and should not be used for carpet sizes, appliance spaces, or furniture. Furniture not to scale and all positions are indicative. Wardrobes are shown to suggest position only, and are not included as standard unless otherwise stated. We operate a policy of continuous improvement and individual features such as kitchen and bathroom layouts, doors, windows, garages and elevational treatments may vary from time to time. Consequently these particulars should be treated as general guidance only and do not constitute a contract, part of a contract or a warranty. 156487/01/16

Bellway Homes Ltd,
 (Northern Home Counties Division)
 St Andrew's House, Caldecotte
 Lake Drive, Caldecotte,
 Milton Keynes MK7 8LE
 Telephone 01908 364200
 Fax 01908 364201
 www.bellway.co.uk