

The Clyde

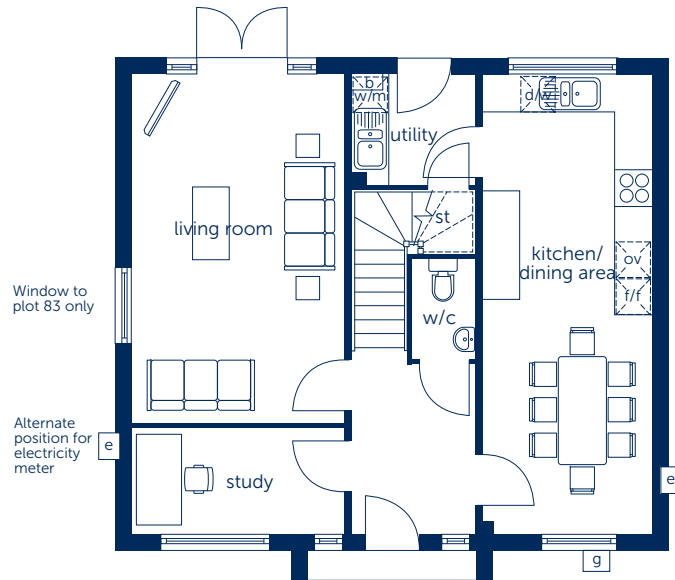
Four bedroom home



Bellway

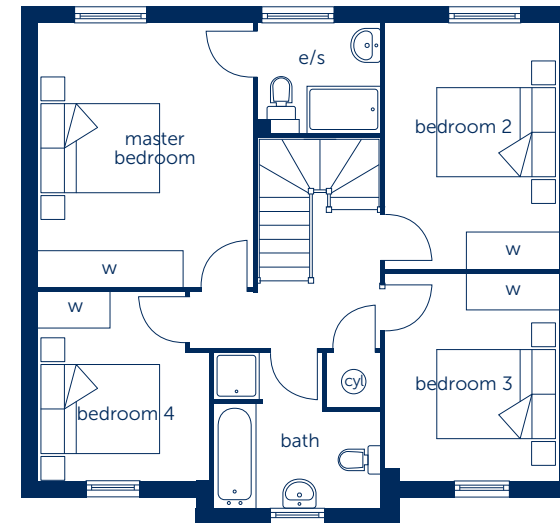
The Clyde

Four bedroom home



Ground Floor

Kitchen/ Dining Area	7.554m x 2.775m	24'9" x 9'1"
Living Room	5.734m x 3.485m	18'10" x 11'5"
Study	3.485m x 1.727m	11'5" x 5'8"



First Floor

Master Bedroom	5.216m x 4.250m	17'1" x 13'11"
Bedroom 2	4.856m x 3.398m	15'11" x 11'2"
Bedroom 3	4.097m x 3.398m	13'5" x 11'2"
Bedroom 4	3.737m x 3.371m (max)	12'3" x 11'1" (max)

- boiler hot water cylinder oven dishwasher
- gas meter st w/m W
- e e/s f/f --- reduced head height

Some items shown in this key may be subject to change, and positions could vary from those indicated on this floorplan. Please refer to Sales Advisor for details of your selected plot

Computer generated image shown overleaf. External finishes, landscaping and configuration may vary from plot to plot. Please refer to Sales Advisor for further details. All dimensions are approximate and should not be used for carpet sizes, appliance spaces, or furniture. Furniture not to scale and all positions are indicative. Wardrobes are shown to suggest position only, and are not included as standard unless otherwise stated. We operate a policy of continuous improvement and individual features such as kitchen and bathroom layouts, doors, windows, garages and elevational treatments may vary from time to time. Consequently these particulars should be treated as general guidance only and do not constitute a contract, part of a contract or a warranty. 156487/01/16

Bellway Homes Ltd,
(Northern Home Counties Division)
St Andrew's House, Caldecotte
Lake Drive, Caldecotte,
Milton Keynes MK7 8LE
Telephone 01908 364200
Fax 01908 364201
www.bellway.co.uk