

# The Welland

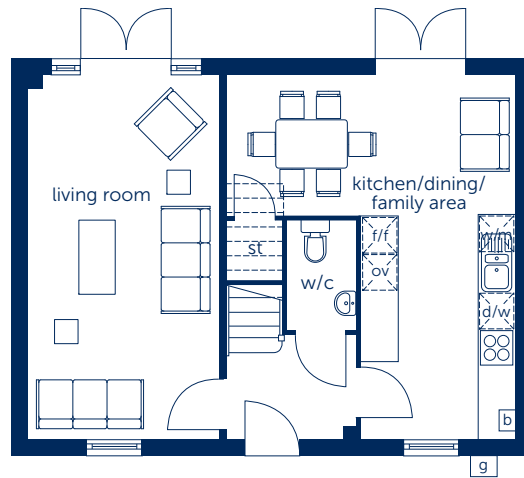
Three bedroom home



**Bellway**

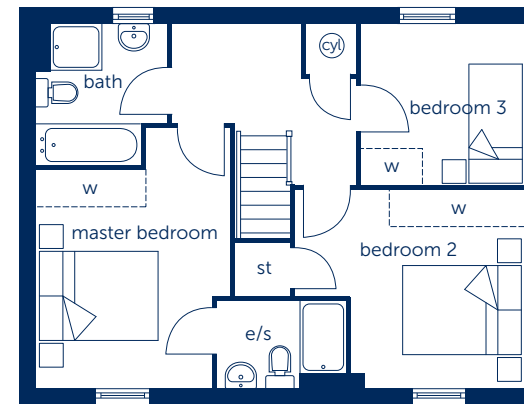
# The Welland

Three bedroom home



## Ground Floor

Kitchen/Dining Family Area	5.980m x 4.745m	19'7" x 15'7"
Living Room	5.980m x 3.110m	19'7" x 10'2"



## First Floor

Master Bedroom	4.271m x 3.166m	14'0" x 10'5"
Bedroom 2	3.746m x 3.251m	12'3" x 10'8"
Bedroom 3	2.659m x 2.636m	8'9" x 8'8"

**b** boiler    **cy** hot water cylinder    **ov** oven space    **d/w** dishwasher  
**st** cupboard    **w/m** washing machine    **w** wardrobe  
**e/s** en suite    **f/f** fridge/freezer    --- reduced head height

Some items shown in this key may be subject to change, and positions could vary from those indicated on this floorplan. Please refer to Sales Advisor for details of your selected plot

Computer generated image shown overleaf. External finishes, landscaping and configuration may vary from plot to plot. Please refer to Sales Advisor for further details. All dimensions are approximate and should not be used for carpet sizes, appliance spaces or furniture. Furniture not to scale and all positions are indicative. Wardrobes are shown to suggest position only, and are not included as standard unless otherwise stated. We operate a policy of continuous improvement and individual features such as kitchen and bathroom layouts, doors, windows, garages and elevational treatments may vary from time to time. Consequently these particulars should be treated as general guidance only and do not constitute a contract, part of a contract or a warranty. 170433/05/17

Bellway Homes Ltd,  
 (Northern Home Counties Division)  
 St Andrew's House, Caldecotte  
 Lake Drive, Caldecotte,  
 Milton Keynes MK7 8LE  
 Telephone 01908 364200  
 Fax 01908 364201  
[www.bellway.co.uk](http://www.bellway.co.uk)