

The Sandy

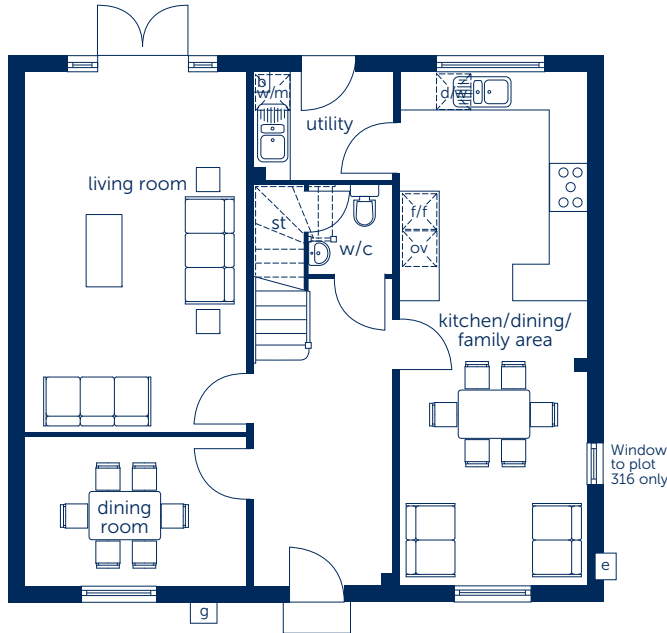
Four bedroom home



Bellway

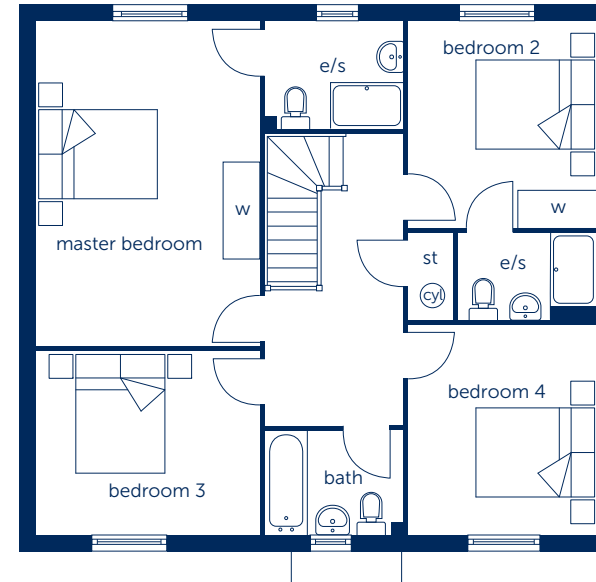
The Sandy

Four bedroom home



Ground Floor

Kitchen/Dining/ Family Area	8.450m x 3.050m	27'9" x 10'0"
Living Room	5.922m x 3.615m	19'5" x 11'10"
Dining Room	3.615m x 2.435m	11'10" x 8'0"



First Floor

Master Bedroom	5.347m x 3.663m	17'7" x 12'0"
Bedroom 2	3.386m x 3.101m	11'1" x 10'2"
Bedroom 3	3.663m x 3.010m	12'0" x 9'11"
Bedroom 4	3.450m x 3.101m	11'4" x 10'2"

- boiler electric meter cupboard fitted wardrobe fridge/freezer space oven space
- gas meter hot water cylinder en suite dishwasher space washing machine space reduced head height

Some items shown in this key may be subject to change, and positions could vary from those indicated on this floorplan. Please refer to Sales Advisor for details of your selected plot

Computer generated image shown overleaf. External finishes, landscaping and configuration may vary from plot to plot. Please refer to Sales Advisor for further details. All dimensions are approximate and should not be used for carpet sizes, appliance spaces or furniture. Furniture not to scale and all positions are indicative. Wardrobes are shown to suggest position only, and are not included as standard unless otherwise stated. We operate a policy of continuous improvement and individual features such as kitchen and bathroom layouts, doors, windows, garages and elevational treatments may vary from time to time. Consequently these particulars should be treated as general guidance only and do not constitute a contract, part of a contract or a warranty. 170433/05/17

Bellway Homes Ltd,
(Northern Home Counties Division)
St Andrew's House, Caldecotte
Lake Drive, Caldecotte,
Milton Keynes MK7 8LE
Telephone 01908 364200
Fax 01908 364201
www.bellway.co.uk