

The Orwell

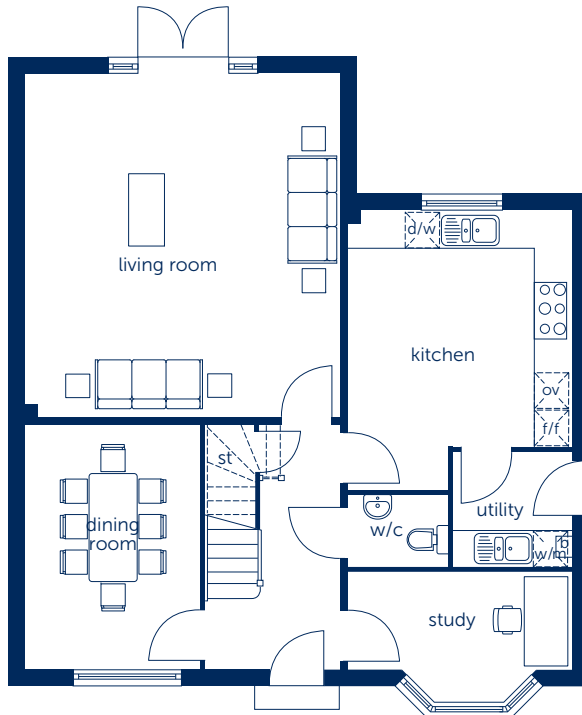
Five bedroom home



Bellway

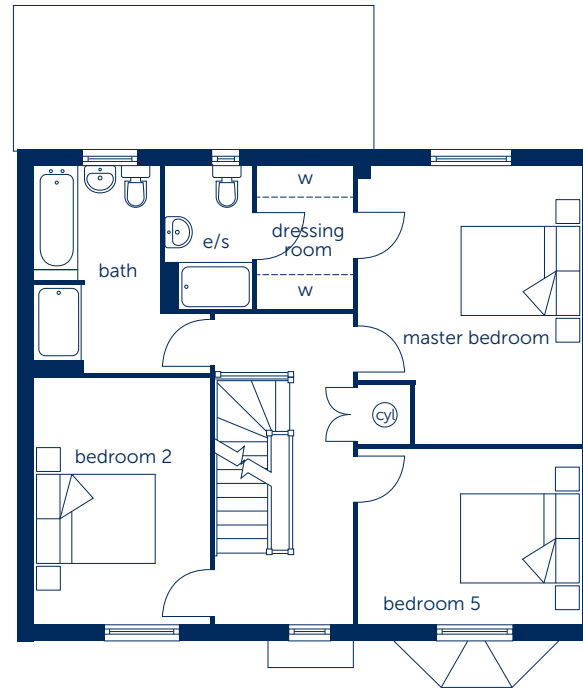
The Orwell

Five bedroom home



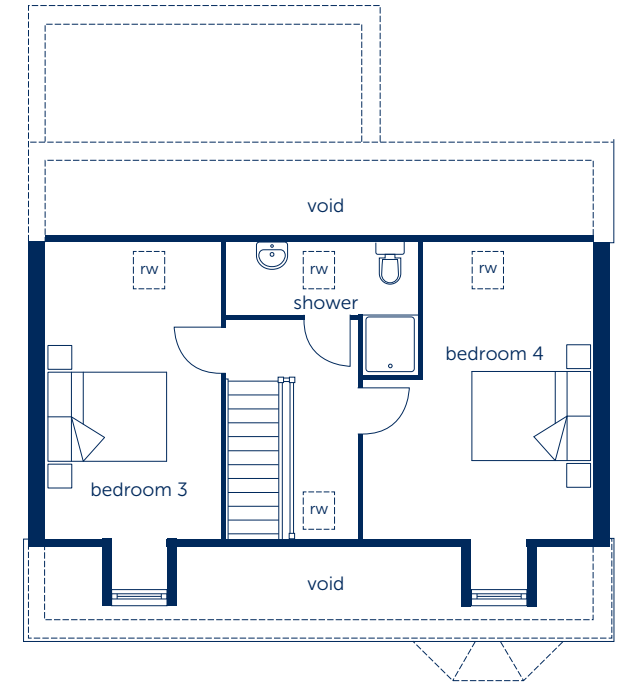
Ground Floor

Kitchen	4.601m x 3.675m (max) (max)	15'1" x 12'1" (max) (max)
Living Room	5.634m x 5.185m	18'5" x 17'0"
Dining room	4.014m x 2.876m	13'2" x 9'5"
Study	3.675m x 1.572m	12'1" x 5'2"



First Floor

Master Bedroom	4.561m x 3.664m	14'11" x 12'0"
Bedroom 2	4.052m x 2.876m	13'3" x 9'5"
Bedroom 5	2.876m x 3.667m	9'5" x 12'0"



Second Floor

Bedroom 3	4.880m x 2.873m	16'0" x 9'5"
Bedroom 4	4.880m x 3.776m	16'0" x 12'5"

b boiler e electric meter st cupboard d/w dishwasher space w/m washing machine space rw roof window
g gas meter cy hot water cylinder e/s en suite f/f fridge/freezer space ov oven space --- reduced head height

Some items shown in this key may be subject to change, and positions could vary from those indicated on this floorplan. Please refer to Sales Advisor for details of your selected plot

Computer generated image shown overleaf. External finishes, landscaping and configuration may vary from plot to plot. Please refer to Sales Advisor for further details. All dimensions are approximate and should not be used for carpet sizes, appliance spaces or furniture. Furniture not to scale and all positions are indicative. Wardrobes are shown to suggest position only, and are not included as standard unless otherwise stated. We operate a policy of continuous improvement and individual features such as kitchen and bathroom layouts, doors, windows, garages and elevational treatments may vary from time to time. Consequently these particulars should be treated as general guidance only and do not constitute a contract, part of a contract or a warranty. 170433/05/17

Bellway Homes Ltd,
 (Northern Home Counties Division)
 St Andrew's House, Caldecotte
 Lake Drive, Caldecotte,
 Milton Keynes MK7 8LE
 Telephone 01908 364200
 Fax 01908 364201
www.bellway.co.uk