

# The Horton

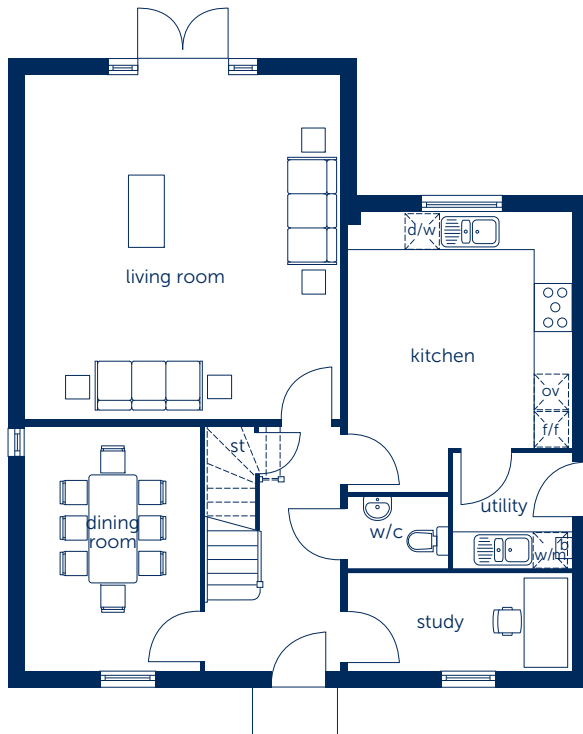
Five bedroom home



**Bellway**

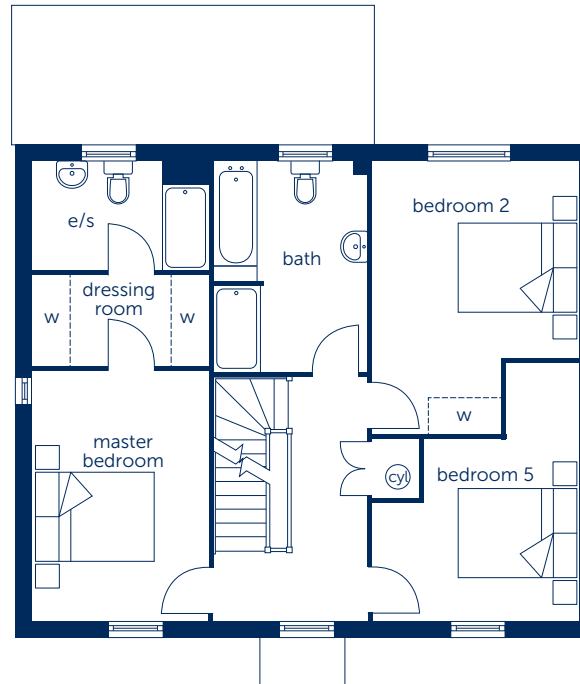
# The Horton

Five bedroom home



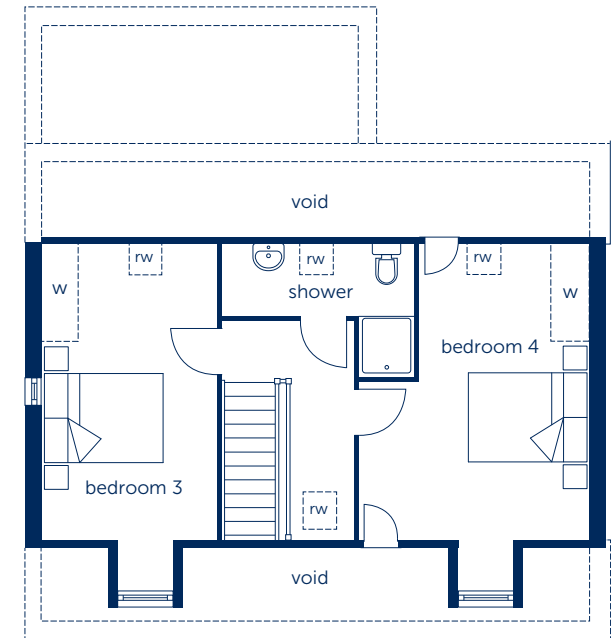
Ground Floor

Kitchen	3.875m x 3.675m	12'8" x 12'1"
Living Room	5.635m x 5.182m	18'5" x 17'0"
Dining room	4.014m x 2.876m	13'2" x 9'5"
Study	3.675m x 1.5875m	12'1" x 5'2"



First Floor

Master Bedroom	4.115m x 2.876m (max)	13'6" x 9'5" (max)
Bedroom 2	4.480m x 3.397m (max)	14'7" x 11'1" (max)
Bedroom 5	4.880m x 3.766m (max)	16'0" x 12'4" (max)



Second Floor

Bedroom 3	4.880m x 2.876m	16'0" x 9'5"
Bedroom 4	4.236m x 3.397m	13'10" x 11'1"

- boiler
- electric meter
- cupboard
- fitted wardrobe
- fridge/freezer space
- oven space
- reduced head height
- gas meter
- hot water cylinder
- en suite
- dishwasher space
- washing machine space
- roof window

Some items shown in this key may be subject to change, and positions could vary from those indicated on this floorplan. Please refer to Sales Advisor for details of your selected plot

Computer generated image shown overleaf. External finishes, landscaping and configuration may vary from plot to plot. Please refer to Sales Advisor for further details. All dimensions are approximate and should not be used for carpet sizes, appliance spaces or furniture. Furniture not to scale and all positions are indicative. Wardrobes are shown to suggest position only, and are not included as standard unless otherwise stated. We operate a policy of continuous improvement and individual features such as kitchen and bathroom layouts, doors, windows, garages and elevational treatments may vary from time to time. Consequently these particulars should be treated as general guidance only and do not constitute a contract, part of a contract or a warranty. 170433/05/17

Bellway Homes Ltd,  
(Northern Home Counties Division)  
St Andrew's House, Caldecotte  
Lake Drive, Caldecotte,  
Milton Keynes MK7 8LE  
Telephone 01908 364200  
Fax 01908 364201  
www.bellway.co.uk