

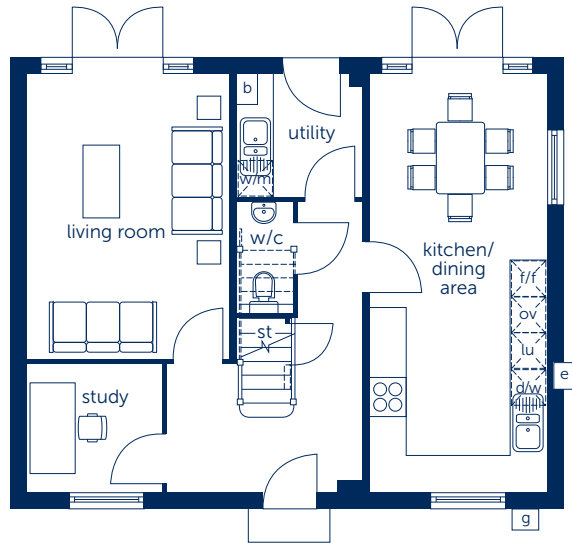
The Carrisbrooke Four bedroom home



Bellway

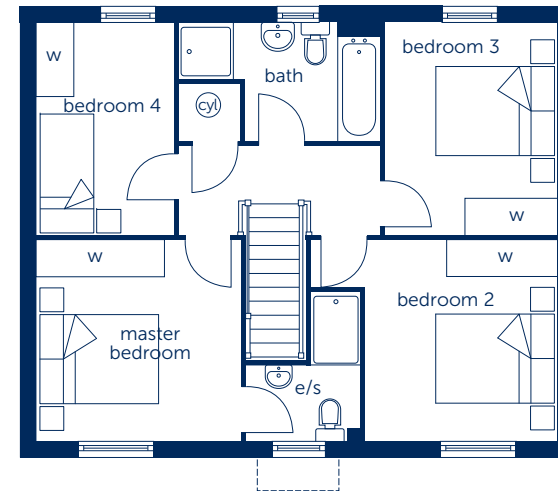
The Carrisbrooke

Four bedroom home



Ground Floor

Kitchen/Dining Area	6.877m x 2.910m	22'7" x 9'7"
Living Room	4.685m x 3.305m	15'4" x 10'10"
Study	2.191m x 2.099m	7'2" x 6'11"



First Floor

Master Bedroom	3.361m x 3.298m	11'0" x 10'10"
Bedroom 2	4.045m x 3.298m	13'3" x 10'10"
Bedroom 3	3.484m x 2.811m	11'5" x 9'3"
Bedroom 4	3.484m x 2.241m	11'5" x 7'4"

b boiler e electric meter st cupboard w fitted wardrobe f/f fridge/freezer space ov oven space --- reduced head height
g gas meter cy hot water cylinder e/s en suite d/w dishwasher space w/m washing machine space lu larder unit

Some items shown in this key may be subject to change, and positions could vary from those indicated on this floorplan. Please refer to Sales Advisor for details of your selected plot

Computer generated image shown overleaf. External finishes, landscaping and configuration may vary from plot to plot. Please refer to Sales Advisor for further details. All dimensions are approximate and should not be used for carpet sizes, appliance spaces or furniture. Furniture not to scale and all positions are indicative. Wardrobes are shown to suggest position only, and are not included as standard unless otherwise stated. We operate a policy of continuous improvement and individual features such as kitchen and bathroom layouts, doors, windows, garages and elevational treatments may vary from time to time. Consequently these particulars should be treated as general guidance only and do not constitute a contract, part of a contract or a warranty. 170433/05/17

Bellway Homes Ltd,
 (Northern Home Counties Division)
 St Andrew's House, Caldecotte
 Lake Drive, Caldecotte,
 Milton Keynes MK7 8LE
 Telephone 01908 364200
 Fax 01908 364201
www.bellway.co.uk