

The Carlisle

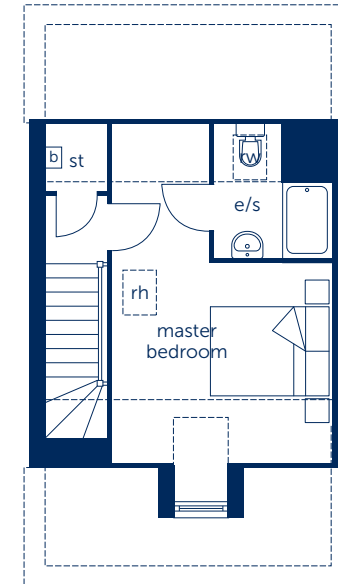
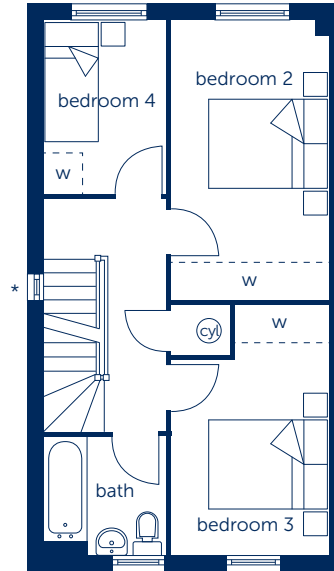
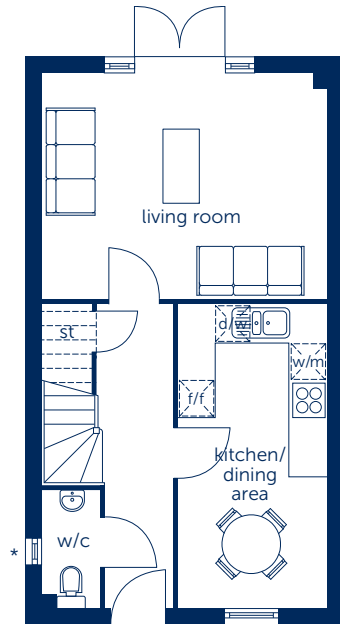
Four bedroom home



Bellway

The Carlisle

Four bedroom home



Ground Floor

Kitchen/ Dining Area	4.976m x 2.436m	16'4" x 8'0"
Living Room	4.685m x 3.711m	15'4" x 12'2"

First Floor

Bedroom 2	4.593m x 2.567m	15'1" x 8'5"
Bedroom 3	4.095m x 2.576m (max)	13'5" x 8'5" (max)
Bedroom 4	2.841m x 2.025m	9'4" x 6'8"

Second Floor

Master Bedroom	5.576m x 3.601m (max)	18'4" x 11'10" (max)
----------------	--------------------------	-------------------------

- boiler
- electric meter
- cupboard
- fitted wardrobe
- fridge/freezer space
- oven space
- reduced head height
- gas meter
- hot water cylinder
- en suite
- dishwasher space
- washing machine space
- roof window
- roof hatch

Chimney position varies from plot to plot. *See siteplan for window positions.

Some items shown in this key may be subject to change, and positions could vary from those indicated on this floorplan. Please refer to Sales Advisor for details of your selected plot

Computer generated image shown overleaf. External finishes, landscaping and configuration may vary from plot to plot. Please refer to Sales Advisor for further details. All dimensions are approximate and should not be used for carpet sizes, appliance spaces or furniture. Furniture not to scale and all positions are indicative. Wardrobes are shown to suggest position only, and are not included as standard unless otherwise stated. We operate a policy of continuous improvement and individual features such as kitchen and bathroom layouts, doors, windows, garages and elevational treatments may vary from time to time. Consequently these particulars should be treated as general guidance only and do not constitute a contract, part of a contract or a warranty. 170433/05/17

Bellway Homes Ltd,
(Northern Home Counties Division)
St Andrew's House, Caldecotte
Lake Drive, Caldecotte,
Milton Keynes MK7 8LE
Telephone 01908 364200
Fax 01908 364201
www.bellway.co.uk